

# ISLAND

Lake Erie Islands  
Conservancy  
Presents



# GREEN SCENE

Lake Erie Islands Conservancy Quarterly Newsletter

Fall 2019

## MBI Forested Wetland Preserve Additions

By Lisa Brohl



Photos: Left—Judy Twarek Bickley and Lisa Brohl at the closing July 3, 2019 Right—Middle Bass Forested Wetland Preserve Below—Middle Bass Island Project Area Map

Our Middle Bass Forested Wetland Preserve has grown in size this summer! The following press release gives details of an approximately 4 acre parcel purchased from the Island Development Corporation and Burgundy Bay. We also closed

July 3 on eight acres purchase from Carl Hahn with grants from the Clean Ohio Conservation Fund and the Coastal Estuarine Land Conservation Program through the Ohio Coastal Management

(Continued on page 7)

### Our Mission:

To encourage conservation and Protection of Natural and Agricultural Lands in the Lake Erie Islands for the Benefit of Future Generations.



### FUTURE GENERATIONS

Speaking of Future Generations.... What could be more exciting for little Gemma than a Scavenger Hunt! Emma Young, our AmeriCorps Intern started the fun. More on page 15!

### In This Issue:

LEIWT Designation	3
Wish List	4
Middle Bass Music Festival Report	8
Middle Bass Island Poker Kayak Day	13
AmeriCorps Intern Report	14
New and Renewing Members	18

### Upcoming Events:

Bird-Banding	4
Bird Seed Sale	6
Annual Meeting	16
Holiday Bazaar	16
Save the Dates	20

### Middle Bass Island Project Area Map



## A New Invader *By Lisa Brohl*



Photo: Left—European frogbit, Photo by Dave Brenner (Michigan Sea Grant); Right—Lisa Brohl removing the invasive European frogbit by the bucket and bag

A new invader has shown up in our island wetlands. Two years on Kelleys Island, we found a few plants of the nonnative invasive European frogbit in the North Pond State Nature Preserve during an OSU Stone Lab wetland workshop I was assisting Dr. Jim Bissell and Trish Fox of the Cleveland Museum of Natural History with. This plant has already taken over portions of marshes on the mainland, causing problems at Old Women Creek and Ottawa National Wildlife Area. An attractive plant originally imported for water gardens, it quickly spreads and its thick roots quickly outcompete all else. When we taught the workshop in August, some parts of the North Pond were covered with the plant. Although we took out several garbage bags full there is much more that needs to be removed.

While on vacation just a week later, I camped at the Munuscong River State Forest Campground in Michigan. That morning, a volunteer group led by the Three Shores Cooperative Invasive Species Management Area with students and faculty from Lake Superior State College were there to pull and remove European frogbit. I helped out and learned a great bit about how to control it from them.

We need to be on the watch that it does not show up at our other island wetlands! Take a good look at this plant and let me know if you see it.

Lisa Brohl, 419-366-2087 or [leiconservancy@gmail.com](mailto:leiconservancy@gmail.com)

## Firelands Audubon Visit *By Lisa Brohl*



Photo: Firelands Audubon Society during their visit to South Bass Island this summer

The Firelands Audubon Society paid a visit to South Bass Island on July 17, 2019. Mary Warren arranged the visit with Lisa Brohl for their group to tour by golf cart our island preserves. The group shown here visited the Jane Coates Wildflower Trail, Scheeff East Point Preserve, Dodge Woods, Massie Cliffside Preserve as well as a stop at the South Bass Island

Lighthouse grounds, a walk through Cooper's Woods, and lunch on the back porch of the Lake Erie Islands Nature and Wildlife Center. The Firelands Audubon Society have been supporters of our land preservation efforts and made a donation to the Conservancy for the July visit.

*The Put-in-Bay*  
**Gazette**  
Ohio's Oldest Island Newspaper  
(419) 285-3645

**Shop** the **Resale**  
Downtown Put-in-Bay  
Behind LEIHS Museum  
419-341-2725

**Jet Express**  
**Excursion Adventures**  
**Cruising Lake Erie & Beyond**  
Visit [jet-express.com](http://jet-express.com) for more details

# Lake Erie Island Water Trail Dedication *By Kelly Faris*



**Photos:** Clockwise—Lisa Brohl, CEO of Put-in-Bay Township Park District watches as Mary Mertz, Director of the Ohio Department of Natural Resources, signs the document designating the Lake Erie Island Water Trail as an official water trail of the State of Ohio with Glenn Cobb, Chief of the Division of Parks and Watercraft and Tom Arbour, Land and Water Trails Coordinator.; Sara Booker and Kelly Faris at the dedication. Thanks Sara for the snacks and decorating!; Tina Larson and Emma Young in kayaks following designation ceremony.; Andrea Irland and Sarah Orlando in kayaks following designation ceremony. Below—USA Today LEIWT Designation mention

On Tuesday, August 6, at the State Park at Oak Point, Put-in-Bay, Ohio, approximately 75 people attended the formal dedication by the State of Ohio of the Lake Erie Islands Water Trail.

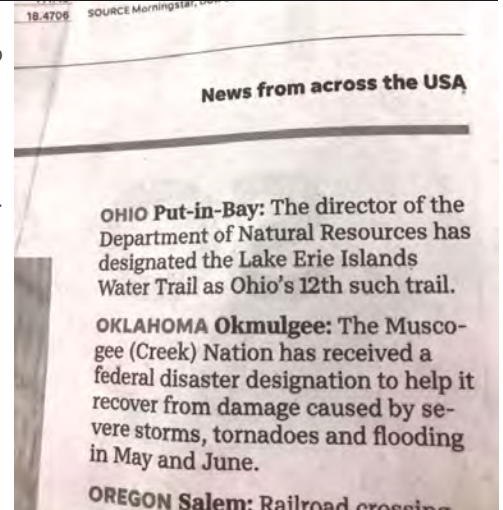
A number of speakers complemented and praised the development of the trail and the brochure that provides information on the newest of the State's Water Trail including Lisa Brohl, Andrea Irland, Chris Winslow-Director of Ohio Sea Grant, Justin Wolcott of the Ottawa National Wildlife Service, and Tom Arbour of the Ohio Department of Natural Resources (ODNR).

After her comments, Director Mertz, moved to a table and signed the official document designating the Lake Erie Islands Water Trail and a State of Ohio Water Trail. There are now 12 Ohio Department of Natural Resources designated Water Trails. Director Mertz led a kayak trip around Gibraltar Island following the signing.

The Lake Erie Islands Water Trail (LEIWT) has five separate routes totaling more than 50 miles around North Bass, Middle Bass, and South Bass Islands, Kelleys Island, and along the mainland of Catawba Island and East Harbor State Park. Each route is unique.

Put-in-Bay Township Park District was the lead agency in developing the Lake Erie Islands Water Trail, and Lisa Brohl, Chief Executive Officer of the Park District, spearheaded the Water Trails project. Andrea Irland, National Park Service's Rivers, Trails and Conservation Assistance Program, provided technical assistance. Ohio Sea Grant developed the brochure and map of the Lake Erie Water Trails.

The project was made possible by an Ohio Environmental Education Fund (OEEF) grant from the Ohio Environmental Protection Agency.



**Photo:** Mary Mertz, Director of the Ohio Department of Natural Resources, addresses guests LEIWT designation ceremony

Mary Mertz, Director of ODNR, provided final comments during the brief ceremony and said, "The state's water trails help bring communities together, encourage environmental awareness and provide opportunities for people to be active."

## Fall Bird Banding 2019 *By Lisa Brohl*

The Fall 2019 islands banding season has begun!

Tom and Paula Bartlett spent three days at the Vineyard B&B on South Bass September 11-13. Things were a little slow as only 37 birds were banded with 3 recaptures. Most of the birds were thrushes but a few warblers showed up. (See SBI Banding Photos on next page!)

The Results are as follows:

1 Magnolia Warbler, 1 Chestnut-sided Warbler, 1 Blackpoll Warbler, 1 Yellow-bellied Flycatcher, 5 Ovenbirds, 12 Swainson's Thrush, 2 Gray-cheeked Thrush, 1 Veery, 1 Baltimore Oriole (one of the latest I have banded), 4 Northern Cardinal, 4 American Robin, 1 European Starling, 1 Common Grackle, 1 Eastern Screech-Owl, and 1 Ruby-throated Hummingbird.

Below are some opportunities to see Tom and Paula Bartlett and bird banding crew in action this fall on the islands.

## LEIC Fall 2019 Lake Erie Islands Bird Banding / Avian Study Schedule

Tom and Paula Bartlett will be banding birds on the following dates for the public to come and visit. Please let us know if you are planning to visit by e-mailing Tom at [hthomas.bartlett@gmail.com](mailto:hthomas.bartlett@gmail.com) or call 567-278-2300. We need to make sure that you are parking in the right location and can give you directions. *Please do not park on private drives or property outside the preserves without permission. The gates should be open during banding ours and you will likely be directed where to park.*

It is a wonderful opportunity to see the birds up close! *All dates subject to change, cancelation, weather, or rainout—Call if in doubt!*

### Middle Bass Island (MBI) East Point Preserve

September 23-27 - banding from 6:00 AM until evening daily  
September 28 - banding from 6:00 AM until noon.

H. Thomas Bartlett, Federal Permit # 21624  
1833 South Winfield Drive  
Tiffin, Ohio 44883  
(419) 447-0005 or 567-278-2300 or 419-937-6255  
[hthomas.bartlett@gmail.com](mailto:hthomas.bartlett@gmail.com)

### Kelleys Island (KI) Jones Preserve at Long Point (passerines) and Scheele Preserve (saw-whet owls)

September 16-21 Fall Feather and Leaves Festival-banding at Jones Preserve at Long Point.  
October 14 -31 Kelleys Island Saw-whet Owl and Long Point or feeder banding  
November 1-3 Kelleys Island Owl Festival  
November 1 -11 Kelleys Island Saw-whet Owl and Long Point or feeder banding  
November 12 -24 Kelleys Island Saw-whet Owl and Long Point or feeder banding

## LEIC and PIBTPD Wish List

As you wind down from the Summer fun and prepare for the cooler seasons, the Conservancy's still hard at work with much to do and planning for next Spring too! Let us know if you can help us out with any of these items at [leiconservancy@gmail.com](mailto:leiconservancy@gmail.com) or 419-366-2087. Or you may have skills you wish to contribute—please call!

- New members! Check us out at [www.lakeerieislandsconservancy.org](http://www.lakeerieislandsconservancy.org)!
- Larger Office Space, Assistance sorting, organizing office.
- Volunteers Always Needed-spread mulch on trails, removed downed trees and pick up litter-garlic mustard pulling in spring-all preserves.
- Website and Social Media Assistance
- Adobe Editing programs
- Recycled Copying Paper, Ink for Printers (Brother LC y1, HP 970XL, HP 971XI-must not be generic)
- Golf Cart for Summer Transport of tools, personnel.
- Assistance with trail layout, construction, parking, mulching and signage with extension of the trail or boardwalk at the Middle Bass Island Forested Wetland Preserve
- Medium Size Cat or Dog Carrier
- ESRI Text and Software, Getting to Know Arc GIS-Laptop with Windows 10 or more to use program

## Support LEIC through Amazon Smile!



Support Lake Erie Islands Conservancy by shopping at AmazonSmile.  
When you shop at AmazonSmile, Amazon will donate to Lake Erie Islands Conservancy. Support us...  
SMILE.AMAZON.COM

The Lake Erie Islands Conservancy website sports an ad for the Amazon Smile website. Shopping here will send donations to the LEIC account. Click the box to go directly to the Amazon Smile website! Thanks to those of you who have been shopping with Smile!

## Reel Bar Stool Challenge

*By Lisa Brohl*



Thanks to the Reel Bar for their donation to our Conservancy from the Bar Stool Challenge!! Here is manager Andy Christiansen presenting LEIC board member John Ladd with the check. We really appreciate the Reel Bar including the Conservancy each year in this fundraiser!

### Freshwater Sensations

Christine Ontko  
Bed and Breakfast  
PO Box 307  
419-366-1036  
[www.freshwatersensations.com](http://www.freshwatersensations.com)



### Welcome to The Boardwalk!

341 Bayview Ave  
Put-in-Bay, OH 43456  
419-285-3695



www.HiseyGroup.com  
440-315-6000  
Lee Hisey  
Jim Steenstra  
Reni Miller  
Molly Schmittgen

## Fall Bird Banding SBI



Photos: From top—Eastern Screech Owl, young Baltimore Oriole, young male Ruby-throated Hummingbird, Chestnut-sided Warbler

## Scheeff East Point Nature Preserve Put-in-Bay, Ohio Annual Review by the Western Reserve Land Conservancy By Kelly Faris

The annual visit of the Western Reserve Land Conservancy to inspect the Scheeff East Point Nature Preserve took place on June 25, 2019. Haley Surckia, Land Steward Intern for Western Reserve Land Conservancy, completed the on-site review of the property.

As with each of the preserves owned and operated by the Put-in-Bay Township Park District, there are deed restrictions and/or conservation easements that ensure that the properties will remain a natural area.

Representatives of Western Reserve visited the property to ensure that the conservation

easement on the Scheeff Preserve is being upheld.

A formal letter documenting the 2019 visit from Sarah Kitson, Land Steward for the Southern and Western Region of the Western Reserve Land Conservancy, stated, "...high water from the lake has altered the locations of beaches .... There were no other significant changes noted this year ... The Scheeff East Point Nature Preserve ...provides excellent habitat for purple martins and tree swallows. The views are gorgeous...."



Photo: Haley Surckia, Land Steward Intern for the Western Reserve Land Conservancy, begins the annual inspection of the Scheeff East Point Nature Preserve

## Lake Erie Wing Watch 2019 By Lisa Brohl

The Lake Erie Islands Conservancy and Lake Erie Islands Nature and Wildlife Center both had a



table at the recent Lake Erie Wing Watch program held in Huron, Ohio on September 14, 2019. Shown here are Kate Ptak and Martyn Drabik-Hamshare at the tables that day. Lisa Brohl led a birding tour of the preserves on South Bass Island on Sunday, September 15, 2019 for 18 visitors. The highlight of the excursion were the white pelicans who flew by while the group was at the South Bass Island Lighthouse. Thrushes and an ovenbird were found at the Jane Coates Wildflower Trail.



## Winter Bird Seed Sale 2019!

Have your winter bird seed supply delivered to your island residence! We will be selling Winter Bird Seed to benefit LEIC-BSC again this fall. Titgemeier's Feed and Garden Stores will be supplying us with the following types of seed: niger/thistle, black oil sunflower, and mixed birdseed of



several grades. Titgemeier's is a family owned feed and garden store in business since January 12, 1888 at 701 Western Avenue in Toledo, Ohio. A most unusual store, their products range from grass seed and fertilizer to pet, wild bird, and brewing supplies. Stop in and check them out the next time you are in the Toledo area! We appreciate their assistance with this sale!!! Please get your order in before November 4 to have it delivered to your island residence. To place your order, please check out our website at [www.lakeerieislandsconservancy.org](http://www.lakeerieislandsconservancy.org) or feel free to call Kelly or Marty Faris at 419-285-4772 or [kelmar@thirdplanet.net](mailto:kelmar@thirdplanet.net). Delivery will be in mid-November.

## EcoTour 2019 *By Lisa Brohl*

The Put-in-Bay Township Park District held its annual EcoTour during Island Green Week Monday, August 6, and Tuesday, August 7, 2019. Kendra Koehler and Kelly and Marty Faris planned the event. Participants met at the Put-in-Bay Town Hall where vendors were set up for the two days. They were given a schedule of places to visit on their own for two days as well as an EcoTour guide. Thanks go to Sarah Cochran for her wild cave program and tour. We appreciate Karen Wilhelm, Julene Market, John Ladd, Linda Shull, and Peggy Leopold for acting as guides at our island preserves that day to answer questions for visitors.



Photos: Clockwise—Emma Young and Island Green Week Chair Renee Market selling Put-in-Bay and Middle Bass Music Fest t-shirts at the EcoTour.; Marty Faris manning the front desk at the EcoTour.; Ron Greene with Jessie's Jewelry at the Town Hall during the EcoTour.; Kelly Faris welcoming visitors at the EcoTour.; EcoTour participant Betsy Brohl.; Kate Ptak with her paintings at the Town Hall during the EcoTour.

## Black Swamp Conservancy Annual Monitoring Visit

*By Lisa Brohl*

The Black Swamp Conservancy holds a conservation easement on the Middle Bass Island East Point Preserve and Costello Tract owned by the Put-in-Bay Township Park District. They visit once a year to make sure that our Park District is maintaining and protecting the parcels as they should be. This year Elisabeth Anderson from the Black Swamp Conservancy visited the preserves with Lisa Brohl on July 25. Thanks to Betsy Brohl for providing the transportation and company!

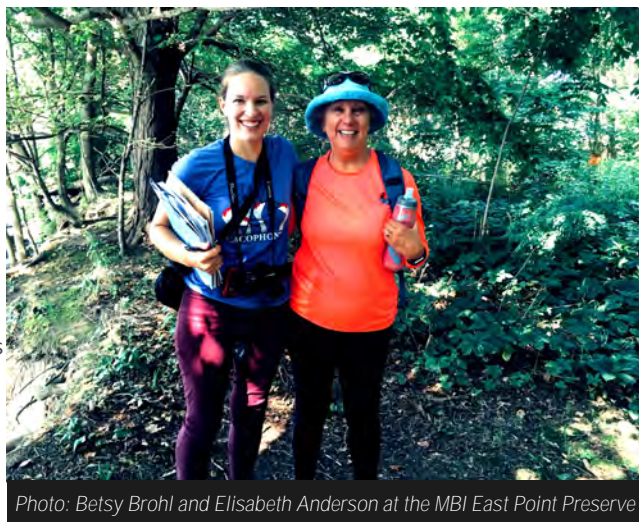


Photo: Betsy Brohl and Elisabeth Anderson at the MBI East Point Preserve



Become an LEIC Member for just \$25 for an entire year!

Please see page 19 for details.

**Nobody Knows Island Real Estate Like We Do**  
Call Corky 419-341-4478

**BOLTE**  
Real Estate  
**PUT IN BAY**  
2017 REALTOR'S CHOICE

**YOUR SHIP HAS COME IN**  
LAKEERIEISLANDSTRAD.COM

**Put-In-Bay Electric**  
766 Duff Road P.O. Box 567  
Put-In-Bay, Ohio 43456  
419-285-6120

Program. On the last day of August, we completed the purchase of additional small lots in the area from private individuals making the preserve now over 40 acres. We hope in the future to have additional public access to the area with trails/boardwalks. Thanks to all of our grantors and our supporters who have made this possible!

#### PRESS RELEASE:

On August 26, 2019, the [Put-in-Bay Township Park District](#) and The Conservation Fund announced the conservation of 4.4 acres of critical migratory bird habitat on Ohio's Lake Erie Islands. The protection of this land, which is part of a larger conservation effort on the Islands, will ensure that some of the remaining forest and wetland ecosystems will remain intact and increase recreation opportunities for visitors.

"Put-in-Bay Township Park District has been privileged to work with The Conservation Fund to acquire environmentally sensitive areas," stated Kelly Faris, Chair of Put-in-Bay Township Park District. "It is important that these lands be protected for this generation and future generations. The Park District is dedicated to protecting and preserving these unique areas that sustain the heritage of the Lake Erie Islands."

"Our goal to protect migratory bird habitat and the Lake Erie Islands is our top priority in Ohio," said Peg Kohring, senior associate for conservation services at The Conservation Fund. "We're happy to have worked with Put-in-Bay Township Park District to make this project possible."

A popular recreational destination, the Lake Erie Islands and shores gather nearly 11 million visitors a year. The addition of protected land for the Put-in-Bay Township Park District will increase public access to the various ecosystems the Islands have to offer. The newly-protected land joins 13 adjacent acres and 44 nearby acres already protected by the Park District.

"The support from The Conservation Fund has allowed us to add additional acreage to our Middle Bass Island Wetland Forest Preserve that is now over 35 contiguous acres of island swamp providing habitat for migratory birds, amphibians, reptiles and other wildlife," said Lisa Brohl, CEO of the Put-In-Bay Township Park District and Chair at Lake Erie Islands Conservancy. "Future residents and visitors will be so appreciative of the Fund's assistance to preserve these forests."

This conservation effort will also help protect the water quality of Lake Erie. The ground underneath the Lake Erie Islands is porous, so any pollution caused by development on these islands can easily reach the surrounding lake through this permeable rock.

It is also important to keep these lands protected for the large and diverse flocks of migratory birds that utilize the Islands during their spring migration. Each spring, millions of birds fly north to nest in the United States and Canada. Western Lake Erie, and particularly the Bass Islands, are important resting and feeding areas for their migratory journey. More than 110 species of bird have been documented on Middle Bass Island, including the black-and-white warbler, Tennessee warbler, Cerulean warbler, Golden-winged warbler, Connecticut warbler, and several other warbler species.

In addition, the 4.4 acres of preserved land are home to multiple species of amphibians and snakes, including the eastern fox snake and melanistic garter snake, both of which are Species of Concern in Ohio. The Lake Erie Islands also serve as a breeding area for migrating monarch butterflies, a species that's endured significant population losses in recent decades.

These lands are being conserved, in part, by funding and technical assistance made available by TC Energy and its subsidiary Columbia Gas LLC in partnership with the U.S. Fish and Wildlife Service in Ohio and The Conservation Fund. Additional funds were provided by the U.S. Environmental Protection Agency's Great Lakes Restoration Initiative (GLRI), implemented through the National Oceanic and Atmospheric Administration's Coastal and Estuarine Land Conservation Program. The Congressionally-authorized GLRI was created to accelerate efforts to protect and restore the largest system of fresh surface water in the world.

GLRI is funded annually by the U.S. Congress with strong leadership and support from Ohio's U.S. Congressional delegation representing the Lake Erie Islands: U.S. Senators Sherrod Brown and Rob Portman and U.S. Representative Marcy Kaptur.

"Protecting Ohio's Lake Erie Islands is critical for maintaining our local ecosystems," said U.S. Senator Sherrod Brown. "Securing this land increases migratory bird habitats and will ensure the Lake Erie Islands and coastline remain a premier destination for birders and outdoor recreation for generations to come."

"I am pleased to see efforts to protect and improve wetlands and forests in and around Lake Erie that serve as habitat for many fish and wildlife populations," said U.S. Senator Rob Portman. "By protecting these ecosystems, we are also boosting tourism and the economy in the region. I will continue my efforts as co-chair of the Senate Great Lakes Task Force to provide federal resources to continue efforts to protect Lake Erie's wildlife, water quality, and ecosystems, such as my GLRI Act and my Migratory Birds of the Americas Act, which was signed into law in March."

"At TC Energy we understand the vital need to conserve, protect and restore habitat – both in the water and on land," said Melissa Dettling, Principal in Environmental Permitting at TC Energy. "We're proud to partner with The Conservation Fund, the U.S. Fish and Wildlife Service in Ohio, and to support the Put-in-Bay Township Park District's conservation efforts for local migratory bird habitats."

This acquisition was a team effort. The land was firstly made available through a cooperative effort between Ms. Gayle Rini-Curtis, represented by Mr. Dan Vician, Trustee of the Roy Curtis Remainder Trust, and Mr. Mark Lawless, President of the Burgundy Bay Homeowners Association (BBA), represented by Mr. David Buda, Esq. Both Ms. Rini-Curtis and the BBA have separately supported Conservation efforts on Middle Bass Island over many years. The Put-in-Bay Township Park District sincerely thanks Ms. Gayle Rini-Curtis and the leaders and members of the Burgundy Bay Association.

#### About Put-In-Bay Township Park District

In 2006, the Common Pleas Court of Ottawa County, Ohio approved a petition to create the Put-in-Bay Township Park District as a local government entity. It was reaffirmed by the voters of the Bass Islands in 2008. Three Commissioners serve to manage and protect unique island habitats for the public to enjoy.

#### About Lake Erie Islands Conservancy

The Lake Erie Islands Conservancy was founded as part of the Black Swamp Conservancy in 2000, receiving their own non-profit status in 2015. The mission statement of the Conservancy is to encourage conservation and protection of natural and agricultural lands in the Lake Erie Islands for the benefit of this and future generations.

[www.lakeerieislandsconservancy.org](http://www.lakeerieislandsconservancy.org)

#### About The Conservation Fund

At The Conservation Fund, we make conservation work for America. By creating solutions that make environmental and economic sense, we are redefining conservation to demonstrate its essential role in our future prosperity. Top-ranked for efficiency and effectiveness, we have worked in all 50 states since 1985 to protect more than eight million acres of land, including nearly 66,000 acres in Ohio.

#### Contacts:

Val Keefer, The Conservation Fund, 703-908-

5802, [vkeefer@conservationfund.org](mailto:vkeefer@conservationfund.org)

Kelly Faris, Put-in-Bay Township Park District Chair, 419-285-4772, [kelmar@thirdplanet.net](mailto:kelmar@thirdplanet.net)



# Middle Bass Music Festival 2019 *By Bruce Miles*

On July 13, 2019 The Lake Erie Islands Conservancy hosted their 3rd music fest on the grounds of the Middle Bass Island Ohio State Park. This event started as a kernel of an idea and through the hard work of a handful of dedicated folks it has become a fun and exciting day for our entire middle bass community while supporting the Lake Erie Islands Conservancy.

We had excellent weather and four wonderful bands entertaining the crowd on July 13th. Peter Huston acted as MC and kept the program running on schedule throughout the day.

I'd like to mention some key members of our organization and volunteer network who helped us pull off this wonderful program. This event could never happen without the support of our middle bass friends, family and neighbors. So thank you to everyone who pitched in to volunteer, donate, participate and just come out to show support of our program. I apologize as I'm sure we'll miss some folks along the way. We had approximately 40 volunteers and I can't possibly remember everyone who helped us. Darren Dunning ran the beer tent, Ann Hicks managed the gate and entry way, Nancy Welter was our manager and a key member of the event organization from start to finish. Lee Hisey did so much behind the scenes that we can't begin to thank him for all his efforts. Of course, I have to thank Lisa Brohl for all her efforts at coordinating various details throughout



the planning and execution of the project. Jamie Berger my life long friend and crazy good artist who designs our posters, tee shirts and does much of our promotional activities and takes photos on the day of the event. I also want to thank my wife Kim for putting up with me talking about this all the time and volunteering her time the day of the event selling tee shirts. Gerald Shanley and John Shanz worked their tails off setting up and tearing down our tents and putting up and tearing down the chairs. Thanks to the Middle Bass School district for donating some of our dining patio tents. The Middle Bass Men's Intellectual Club did a great job selling beer tickets and handling the money from beer and wine sales.

We had 10 tables with folks selling books, art, food and crafts. Our two food trucks offered a great variety of meal options including pizza, BBQ and Lamb Chops.


Most importantly, I'd like to mention the organizations who help us financially. Jim Roesch and The Middle Bass Dock Company, Lake Erie Shores and Islands, The Ohio Arts Council, Lake Erie Shores and Islands, Hisey Group Howard Hanna, South Shore Marine and the Middle Bass Island State Park, and Chris Zeitler of JF Walleye's who also won the Lonz tower climb and made a nice donation to the Conservancy. Russ Scharnsky won the 50-50 raffle.




Photos: Clockwise from top—Folks enjoy Food Trucks; Former Nature Camp Helper Emily Petersen tries on a LEIC Shirt; Committee Member Lee Hisey at work; Mike Roder and Jenne Cecilia from Catawba Brewing Co.; Chris and Lori Ann Zeitler of J. F. Walleye's; Russ Brohl, Kim and Bruce Miles, Festival Organizer; Janet Evans Stearns with her artwork; Riley Brothers Band; Susan Byrnes, Alex Bastian and Tedi Keith Morris at the Beer Tent; Lisa Brohl, Emma Young, and Sue Ungvarsky at LEIC Table; Event Chair Nancy Welter and 50/50 winner Russ Scharnsky



**SOUP AND WHISKEY**  
419-285-GOAT( 4628)  
Catawba Avenue



**Welcome to The Boardwalk!**  
341 Bayview Ave  
Put-in-Bay, OH 43456  
419-285-3695



**Yardworks**  
PO Box 538  
Dan and Valerie Kowalski Put-In-Bay, OH 43456  
Owners (419) 285-2147

## Chimney Swifts Staging *By Paula Ziebarth, Board Member LEIC*

Chimney Swifts are amazing birds. During daylight hours, they fly almost constantly, eating flying insects and even drinking on the wing by skimming the surface of the water with their bills. They cannot perch like most birds, but can cling to vertical surfaces at night to rest. Their long claws are well suited for this purpose. Many people confuse them with swallows, but their closest avian relative is actually the hummingbird.

They have a 12.5-inch wing span and they cannot tuck their wings in like most birds. Sometimes called “flying cigars”, this wonderful euphemism captures the sight of their stubby bodies flanked by the rapid beating of strong wings. Listen for the twittering call of these birds overhead as they feed on flying insects, especially at dusk.

Chimney Swift populations have been on a rangewide decline of about 2.5% per year between 1966 and 2015, resulting in a cumulative decline of 72%. The major cause of the decline is likely due to the loss of available chimneys for nesting and staging (gathering for migration). Many newer homes do not have chimneys and many others cap their chimneys, making them inaccessible for nesting or staging.

Once the young leave the nest, Chimney Swifts from an area begin staging for their migration in the fall. They find a tall shaft, chimney or similar structure to drop into at night, clinging to the vertical walls, side by side conserving body heat and energy in preparation for their migration to their wintering grounds in the upper Amazon basin of Peru, Ecuador, Chile, and Brazil. Large industrial chimneys can accommodate hundreds or even thousands of swifts. We begin observing these roosts at the end of July. Migration begins in September and birds are gone from the area by the end of October. On South Bass Island, the large

chimney at the old Fish Hatchery serves as a roost for birds on the island.

In 2001, the “Swift Night Out” citizen science project began, tracking swift populations throughout the country. To participate, on the second weekend of August and/or September, observe a roost starting about 30 minutes before sunset and estimate number of Chimney Swifts that enter for the night.

On August 10, 2019 I observed the birds entering the chimney at the old South Bass Fish Hatchery. Sunset was at 8:38 pm. I enjoyed listening to the National Anthem over the water and the first bird entered the chimney at 8:43 pm. I counted 159 swifts entering the chimney with last one dropping in at 9:04 pm as it got dark. I reported data on [chimneyswifts.org](http://chimneyswifts.org) website. On a later date, I counted over 300 birds descending into the chimney at dark.

If you want to help Chimney Swifts, leave chimney(s) uncapped and damper closed from mid-April through August. If chimney is wide enough at top (12” or more on the diagonal), one pair may nest with you, constructing sparse nest on inside wall made of sticks and saliva. Fireplace can be used in winter for its intended purpose. If you are concerned that climbing predators might climb down chimney, 2 feet of aluminum flashing installed at top of chimney will keep them out.

Another way to help them with nest or staging sites is to construct a Chimney Swift Tower. LEIC installed one in 2018 at Scheeff East Point Nature Preserve. It was funded by Karen Jennings and constructed and installed by Casey Carty

I hope to see some of you out counting Chimney Swifts during late summer – one of nature’s spectacles that happen around us every day, but one that few are aware of.



Photo: The Carty-Jennings Chimney Swift Tower at Scheeff

## T-Shirts and Hats for Sale!

We still have organic cotton made in the USA t-shirts with our LEIC logo in a variety of colors and sizes. They are for sale for \$20 each. Plus we have our LEIC hats in three colors as well for \$22 each. Contact Lisa Brohl at 419-366-2087 or [leiconservancy@gmail.com](mailto:leiconservancy@gmail.com) or see our booth at Founders Day or the Artisan Fairs!



Photo: Volunteer Beth Furner with new LEIC t-shirt, Colorful LEIC T-Shirts, One of the Colors of Hats we offer

**Arbor Inn B&B**  
A Quiet Couples Retreat  
419-285-2306  
[www.arborinnpb.com](http://www.arborinnpb.com)

**Gump Builders Inc.**  
419-285-5151  
Septic Systems-Foundations-Excavations

**Northern Exposure Investments**  
Joe Kostura  
(419) 341-2366 or (419) 285-3106  
New Construction ~ Residential ~ Commercial  
Remodeling ~ Roofing ~ Concrete ~ Footers  
Foundations ~ Sidewalks ~ Patios ~ Driveways  
Stonework ~ Bobcat & Excavator Services  
Indoor & Outdoor Painting ~ Plumbing

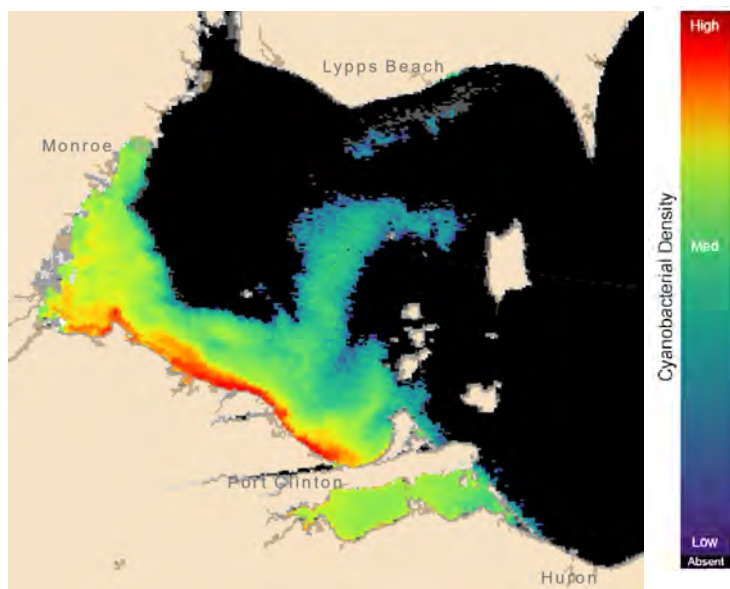
**UNDER CONSTRUCTION**

# Using Wetlands to Reduce Algal Bloom *By Jean Gora*

The shores of the Lake Erie islands have begun receiving their annual gift from the Maumee River watershed: toxic algal blooms containing microcystic cyanobacteria. The blooms are produced by phosphorus and nitrogen in fertilizer used in agriculture and in manure generated by animal feeding operations (AFOs). An August 3 workshop of the Ohio Wetlands Association demonstrated how wetlands can be used to mitigate harmful algal blooms. This article is based in part on information presented at that workshop.

## The Scope of the Problem

This map shows the spread of algal blooms from the mouth of the Maumee river across the Western basin of the lake as of August 11, 2019. The blooms have already reached the southwestern end of South Bass Island. Prevailing winds and the natural flow of Lake Erie go from west to east. Hence, the blooms are likely to have an increasing impact on the islands over the next few weeks.



Cyanobacterial Index from modified Copernicus Sentinel 3 data collected 11 August 2019 at 11:20 EST. The estimated threshold for cyanobacteria detection is 20,000 cells/mL. (<https://tidesandcurrents.noaa.gov/hab/lakeerie.html>)

The western basin of Lake Erie is particularly vulnerable to algal blooms because it is relatively shallow, with an average depth of about 25 feet. It, therefore, heats up quickly in the summer.

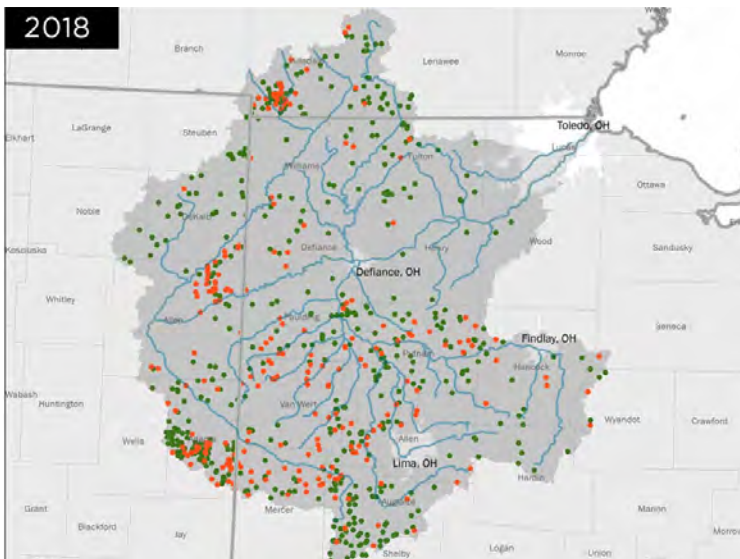
## Sources of the Problem

The Maumee River watershed covers about 6,500 square miles, most of it in Ohio. The region is largely agricultural. Fertilizer is used to grow crops. Large animal feeding operations (sometimes called factory farms) in the region produce huge quantities of manure. Ohio's voluntary regulations allow livestock farmers to apply 150 parts per million of phosphorus contained in manure on fields, three times as much as the typical fertilizer applied by corn and soybean farmers. Most of them drain into streams that ultimately flow into the Maumee River and from there into Lake Erie at Toledo, Ohio. Heavy rain in the spring of 2019 may have deterred some farmers from planting. However, large animal feeding operations produce manure, rain or shine.

The number of large animal feeding operations in the Maumee River watershed appears to have significantly increased in the last

fifteen years. A study by two environmental groups (the Environmental Working Group and the Environmental Law and Policy Center) suggests that the number of factory farms in the watershed rose from 545 in 2005 to 775 between 2005 and 2018. The estimated number of animals more than doubled, from 9 million to 20.4 million.

This map shows the animal feeding operations (AFOs) in the Maumee watershed as of 2018. The green dots show AFOs as of 2005. The red dots show new AFOs that appeared in the watershed between 2005 and 2018.



Source: [https://www.ewg.org/interactive-maps/2019\\_maumee/](https://www.ewg.org/interactive-maps/2019_maumee/) For information on the methodology used in preparation of the report, see: <https://www.ewg.org/maumeemethodology>

## A Global Challenge

Around the world, run-off from urban areas and from agricultural operations including animal feeding operations (AFOs) is having a harmful effect on downstream bodies of water. Problems similar to those affecting Lake Erie have also appeared in Lake Okeechobee in Florida and in Europe's Baltic Sea. The Baltic touches Denmark, Estonia, Finland, Latvia, Lithuania, Sweden, Germany, Poland, and Russia. During the 20<sup>th</sup> century, the earth lost about half of its wetlands. During the 19<sup>th</sup> and 20<sup>th</sup> centuries, Ohio lost approximately 90% of its wetlands, notably by the draining of the Great Black Swamp for agricultural purposes. Agriculture feeds all of us. Hence any solution to the problem of harmful runoff must also be compatible with food production.

## Possible Mitigations for the Problem of Harmful Algal Blooms

At the Ohio Wetlands Association workshop on August 3, Professor William J. Mitsch proposed a method of that would (a) lessen the flow of phosphorus and nitrogen into Lake Erie and other bodies of water; (b) capture them in designated wetlands; and (c) after a lapse of time convert these wetlands into agricultural land. This land would effectively have been pre-fertilized. This method recycles phosphorus and nitrogen. This method is called *wetlaculture* -- wetlands plus agriculture. Prof. Mitsch is associated with Florida Gulf Coast University, the University of South Florida, and Ohio State University.

(Continued on page 11)



## Scheeff East Point Preserve Clean Up July 6 *By Lisa Brohl*

AmeriCorps intern Emma Young organized a beach clean up for Saturday, July 6, 2019 at the Scheeff East Point Preserve. John Mitchell and Cristy Doughty joined Emma and Lisa Brohl in cleaning up the shoreline there.



Photo: John Mitchell, Cristy Doughty, Lisa Brohl, and Emma Young on beach clean up duty at Scheeff! Thanks all!

## Artisan Fair 2019 *By Lisa Brohl*

Thanks Christy Ontko at Freshwater Remedies for organizing another year of the Artisan Fair! This year it was held at the Put-in-Bay Town Hall. We would like to thank the following vendors for participating: Kate Ptak, Sarah Cochran, LEINWC, LEIC, Jill Cooks, Louise Titchener, Bill Slough, Jessie Greene, Celeste Mycoskie, John Baker, and Russ Brohl II. The Lake Erie Islands Conservancy appreciated the support. Another great idea from Christy!



Photos: Clockwise—Jill Cooks; Bill Slough; Louise Titchener; Shaena Kowalski of Freshwater Remedies

## Marjorie Book Society Visit *By Lisa Brohl*

Thanks goes to the Marjorie Book Continuing Ed Society for mulching and pulling garlic mustard at the Jane Coates Wildflower Trail in mid-July! We appreciate the water from Heinemans and lunch from the Boardwalk. Participants were Joe and Maria Link, Lisa Brohl, Ann Lucas, Dana Metcalf, Bill Ritter, Becca Melvin, and James Robb. They also stopped at the Lake Erie Islands Nature and Wildlife Center to help price items for the gift shop.



Photos: Above—Marjorie Book Society at Jane Coates. Below Clockwise—Ann Lucas pulling garlic mustard; Pricing items for the LEINWC Gift Shop; Maria Link and Dana Metcalf pulling garlic mustard; Linda Ostrander from the Boardwalk with lunch snacks for the group; Dana Metcalf pulling Garlic Mustard; Bill Ritter mulching the Jane Coates Wildflower Trail



## 5<sup>th</sup> Annual MBI

### Poker Kayak Day Huge Success! By Tina Larson



Mother Nature provided a perfect day! Twenty-four kayakers was a record. Every dollar of the registration fees went to benefit the MBI Preserves of the PIB Township Park District.

We wish to thank Julene Market and the crew at Miller Ferry for donating 1st prize RT tickets for two adults plus a vehicle and for promoting the event on their website. Jerry Sheller and Joe Hart donated the 2nd prize gift card to their MBI General Store and promoted the event. Dave and Tina Larson donated the 3rd prize steaks from Costco, plus all the treats.

More thanks to Jamie Berger at the Lake Erie Islands Conservancy, the LEINWC, MBI Postmistress Peggy Taylor, and any others who promoted the event! Also, to the Marblehead Coast Guard Station for being alert in case of emergency. TMP Architecture donated a host of copies and sheets of foam core boards to make new signs for all the stops. Susie Clipp and her MBI State Park crew provided nice picnic tables and the grill at our Start/Stop beach

site plus assorted bird song CDs and waterproof floaties for the goodie bags. More nature-friendly goodie bag items were provided by Lisa Brohl. Bottled water was donated by Heineman Winery.

Such an event simply can't be pulled off without a host of eager volunteers to be at the stops to distribute and record poker cards, pass out treats, be alert for dangers, cheer kayakers on and, at the end, grill hot dogs and distribute water bottles and chips while the results were tallied.

Hats off to: AmeriCorps Intern Emma Young and Barbara Pepper (stops 1 and 5), Butch and Diane Wrocklage with the banana-passing help of Simon Gottwald (stop 2), Jim and Betsie Brohl (stop3), Jim Ungvasky and John Schrenk (stop 4), and master grillier Dave Larson (stop 5).

Winners were: 1st place, Chad Ackerman of MBI; 2nd place, Kelley McLellan of Chicago; and 3rd place, Ellen Shaeffer of Catawba.

Thanks and appreciation to them and all of the 21 other kayakers!!!

## Trail Challenge 2019

By Lisa Brohl

The Trail Challenge of the Put-in-Bay Township Park District has been a great success. We went through 1,000 of the booklets quickly and ordered more. Thanks to Christine Ontko of Freshwater Remedies for sponsoring the Challenge with a gift for those who finished all five trails. To Brian Cultice for layout and to Kristin Parrish who helped design the Challenge booklets and put the stamps and booklets out as part of her graduate project. Kristin will have a report for us in our December newsletter about the visitors to our preserves-there was also a log asking for number



of visitors in each group, where they were from and how they heard of our preserve. Photos were all taken of those who completed the Challenge (walking all five trails) when they stopped by to receive their prize from Christy!



Photos: Clockwise—Christine Ontko and Dr. Susan Rasche of the Ohio State University-teaching at Stone Lab when she completed the challenge; Rikki and Dr. Ed Herdendorf complete the challenge; Susan and Ella Tamarin and proud grandma Kate Ptak. Susan and Ella bicycled to the trails as well.



"Your Bank of a Lifetime"  
419-285-7340 [fnblifetime.com](http://fnblifetime.com)  
Bellevue - Catawba - Clyde - Fremont  
Port Clinton - Put-in-Bay - Sandusky

First National Bank Established 1875

Proud supporter of the Lake Erie Islands Conservancy

419-285-2608



New Pizza Shop and Bar  
Come Visit us .. It is worth the trip



PiBDaily

NEWS  
INFORMATION  
PHOTOS

[www.putinbaydaily.com](http://www.putinbaydaily.com)

# 2019 AmeriCorps Intern Emma Young



We greatly enjoyed having Emma Young as our AmeriCorps intern shared this summer between our Conservancy, the Put-in-Bay Township Park District, and the Lake Erie Islands Nature and Wildlife

Center. Below is part of her exit report with the AmeriCorps program. At the end of her ten weeks with us, she has now returned to her studies at Capitol University. We miss her already!



Please summarize all of your project work completed for your entire term of service. Which of these projects are you most proud of?

Throughout my term of service I did trail maintenance, collecting the recycling at the preserves,

communicating with visitors, collecting purple martin and tree swallow data, giving tours at the Lake Erie Islands Nature and Wildlife Center, posting about upcoming events on social media, and making educational posts on social media. I had also planned three events for the public to attend during my term of service. I was also able to assist at other special events such as Island Artisan Fairs, the Middle Bass Island Music Festival, the Middle Bass Island Poker Kayak Day, the Lake Erie Islands Water Trail State Designation, and the seventh annual Pig Roast benefiting the Lake Erie Islands Nature and Wildlife Center. I am most proud of the events that I planned and educating so many visitors about conservation, the environment, our preserves, and the animals in the Lake Erie Islands Nature and Wildlife Center.

**What have you learned about conservation or natural resource management?** I learned that it was extremely important to educate the public about conservation. I also learned that it takes a lot of people to support and work towards achieving goals in conservation and natural resource management.

**What have you learned about working with your host agency/organization? Did you learn a new skill or interest?** I learned that community outreach is extremely important to get people involved and supportive of conservation efforts. I learned that I'm extremely interested in educating and communicating with the public.

**Training/Technical Assistance- Please describe your site orientation and the training you received. Is there additional training or information that might have improved your term?** I received training on how

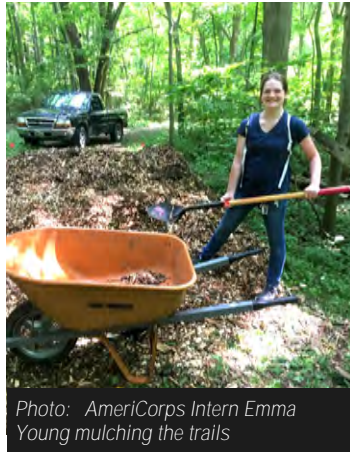


Photo: AmeriCorps Intern Emma Young mulching the trails

to monitor purple martins and tree swallows, how to monitor the recycling and trails, how to give tours at the Lake Erie Islands Nature and Wildlife Center, and how to work a cash register. My supervisors did an excellent job at preparing me for the tasks that I needed to complete during my term.

**Partnership/Collaboration Development-Please list any relevant partners in your work (individuals or organizations other than your host-site that aided you in your work).** Please note whether these partnerships existed prior to your arrival, or if you initiated these partnerships during your term. I assisted with the Ohio State Stone Laboratory during a snake presentation, the ODNR during the Lake Erie Islands Water Trail State Designation, the Marrow Soil and Water, Clyde Middle School's After School Program, and the Marjorie Book Continuing Education. These partnerships existed prior to my term.

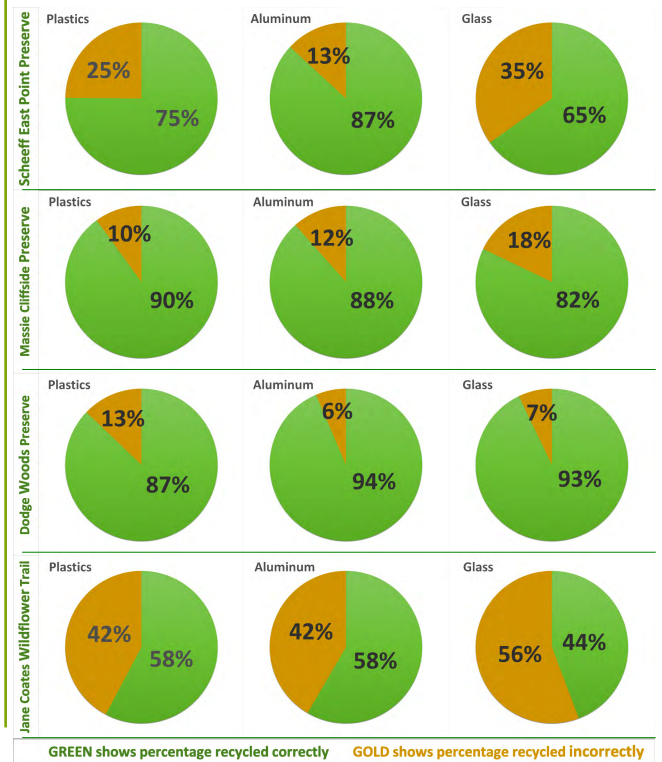
**Community Outreach and Volunteer Engagement-Does the local community seem involved and/or**

interested in your project or organization's objectives? Did your project involve the local community or address a community need? Please discuss how you feel your project impacted and improved the community your organization serves. The local community is very interested and supportive of the organization's objectives. My project involved communicating with the public and educating visitors about our work and goals. I feel that my project did an excellent job in improving the community my organization serves and that the community greatly benefits from their work.

## Recycling at Our Preserves *By Lisa Brohl*

Our AmeriCorps intern Emma Young visited our preserves weekly to monitor things for us this summer. As part of her visits, she emptied our recycling and trash bins at the Jane Coates Wildflower Trail, Scheeff East Point Preserve, Dodge Woods Preserve, and Massie Cliffside Preserve. They are marked for aluminum, glass, and plastic as well as trash bins at each location. Quite a few of the recyclables were contaminated by still having liquids or foods in the containers as well as straws and wrappers. Emma made signs to show visitors how to properly recycle.

The percentage of the amount recycled properly went up over the seven visits that Emma made to the containers. See the percentages in the charts shown here created from the table that she prepared. For some reason, the Jane Coates Wildflower Trail had a high percentage of contaminated recyclables compared to the other sites. Is that it is more remote and folks are using it as a dumping spot on the way to the ferry? We are not sure but it was interesting to see the trends and we thank Emma for providing the data.



### The Dodge House

Put-in-Bay's Largest Waterfront Rental  
Sleeps up to 20 people ~ 419-341-9760  
[www.DodgeHousePIB.com](http://www.DodgeHousePIB.com)



## Scheeff East Point Nature Preserve Trail History

By Paula Ziebarth

Ottawa County Area Contact, Ohio Bluebird Society

The Purple Martin colony at Scheeff East Point Nature Preserve has continued to grow and thrive. For those unfamiliar with successful Purple Martin colonies, proper habitat is necessary for success. South Bass Island has excellent habitat for them. Lake Erie breeds a myriad of flying insect species that allow them to thrive and raise a family. Housing must be at least 40 feet from any tall trees to protect them from marauding hawks and owls.

Purple Martin housing should be monitored every 5 to 7 days to check on the progress of the birds and to deal with any problems found during the nesting cycle. Two of the biggest challenges are attempts to take over colonies by non-native, invasive House Sparrows and nest hygiene. European Starlings are also an aggressive non-native nest site competitor, but have been mostly excluded from the gourds at Scheeff by using Starling Resistant Entry Holes. Many Purple Martin landlords use pesticides in nest compartments to control insect and mite infestations found in nests. I do not do this, preferring to replace nesting material with soft, dry white pine needles once or twice during the nest cycle to eliminate most of the pests found in nests and provide young birds with clean nest material during their 28-day stay in their nest compartment.

Purple Martins are North America's largest swallow. A Purple Martin's diet consists solely of flying insects. These birds consume a lot of them during their 4-month stay here in Ohio. There are 48 artificial gourds available at Scheeff East Point Nature Preserve for Purple Martins to use. In 2019, Purple Martins laid 226 eggs. 202 of those hatched and 195 young fledged. This year's young are currently winging their way to Brazil, making their first long trip to their winter home.

A tree swallow's plumage is iridescent blue/black back with a white underbelly. These birds primarily eat small flying insects. Each Tree Swallow family consumes more than 300,000 flying insects during the nesting season. Tree Swallows usually raise one brood per season, but we are seeing more late second nest attempts in Ohio, likely due to climate change. Tree Swallows overwinter in the southern states and Central America. They leave South Bass Island before the Purple Martins. There are 16 nest boxes available for Tree Swallows to use at Scheeff. In 2019, Tree Swallows laid 108 eggs. 72 of those hatched and 66 young fledged.

2019

SPECIES	#Attempts	1 <sup>st</sup> Egg	#Eggs	#Hatched	#Fledged	Success Rate %
Purple Martin	48	5-28	226	202	195	90
Tree Swallow	17	5-19	108	72	66	82
House Sparrow*	6		0	0	0	0

16 nest boxes; 48 vertical Troyer gourds; monitored by AmeriCorps intern Emma Young and Paula Ziebarth.

Native Birds Fledged Annually and Non-Native Nest Attempts (Success Rate%)

YEAR	Purple Martin	Tree Swallow	EUST Attempts*	HOSP Attempts*
2009	0	49(77%)	0	0
2010	19(100%)	59(85%)	0	4
2011	61(61%)	58(79%)	5	3
2012	118(96%)	55(72%)	10	0
2013	110(100%)	57(85%)	18	5
2014	129 (53%)	58(61%)	0	5
2015	164(95%)	92(78%)	0	5
2016	221 (98%)	76(75%)	0	6
2017	200(85%)	78 (78%)	2	25
2018	212 (98%)	76 (84%)	0	22
2019	195	66	0	6
<b>TOTAL</b>	<b>1429</b>	<b>724</b>	<b>35</b>	<b>75</b>

\*No non-native European Starlings (EUST) or House Sparrows (HOSP) fledged

## Jane Coates Wildflower Trail, Dodge Woods Preserve and Lake Erie Islands Nature and Wildlife Center Trail History

By Paula Ziebarth

Ottawa County Area Contact, Ohio Bluebird Society

In spring of 2019, a new 5-box trail was installed at Dodge Woods Preserve. Nest boxes have a 1-1/8" entry hole to restrict use to that of Black Capped Chickadees or House Wrens. I feared allowing Tree Swallows to use boxes would be frightening for young children walking the storybook trail here. Tree Swallows are rather aggressive when people approach their nest box, swooping on passersby and flying toward their heads. There are also two nest boxes at the Jane Coates Wildflower Trail and four nest boxes at the Lake Erie Islands Nature and Wildlife Center. Here are statistics on the use of those nest boxes this year.

2019

SPECIES	#Attempts	1 <sup>st</sup> Egg	#Eggs	#Hatched	#Fledged	Success Rate %
House Wren	9	5-23	35	31	30	97
Tree Swallow	2	5-23	12	8	8	100
House Sparrow*	3					

Jane Coates: 2 nest boxes; Dodge Woods: 5 nest boxes restricted for BCCH or HOWR use; Wild Life Center: 4 nest boxes; monitored by AmeriCorps intern Emma Young and Paula Ziebarth

Native Birds Fledged Annually and Non-Native Nest Attempts

YEAR	Tree Swallow	House Wren	HOSP Attempts*
2015	9	15	1
2016	4	7	0
2017	7	14	3
2018	7	7	1
2019	8	30	3
<b>TOTAL</b>	<b>35</b>	<b>73</b>	<b>8</b>

\*No non-native House Sparrows (HOSP) fledged

## Scavenger Hunt at the Massie Cliffside Preserve

By Lisa Brohl

AmeriCorps Intern Emma Young put together a popular Scavenger Hunt at the Massie Cliffside Preserve in June. It was a nice way to have families come out and explore our trail!



Photos: Clockwise from Left—Emma and her parents Brian And Elizabeth Young; Katrina Reed-Spatafore with Gemma Blue and Moxie; Lynn Kezur and family

# Colored Leaves, Crisp Air, Cool Conservancy things to do!

## LEIC Annual Meeting - Saturday, October 5 at Middle Bass Island State Park

The Lake Erie Islands Conservancy will hold its annual meeting on Saturday, October 5 at the Middle Bass Island State Park pavilion. Grill food will be provided, bring a covered dish to share. You can ride the Miller Ferry from their downtown Put-in-Bay dock at 3:00pm and ride back to the Bay at 5:00pm. RSVP by e-mailing or calling Chair Lisa Brohl

at 419-366-2087 or leiconservancy@gmail.com. We are holding our meeting at Middle Bass this year to highlight the great land protection and volunteers we have had on Middle Bass in the past. Hopefully a nice fall weekend to enjoy!

## Holiday Bazaar - Thursday, Nov. 21 from 3 to 7pm at Town Hall

Mark your calendar for local holiday shopping – the Annual Holiday Bazaar is on Thursday, November 21 from 3pm to 7pm at the Town Hall, sponsored by the Lake Erie Islands Conservancy and the Lake Erie Islands Nature and Wildlife Center. Local crafters and artisans are invited as well as local businesses with Put-in-Bay or Middle Bass merchandise. If you would like to reserve a table (\$10 ea.) or need additional information,

please contact Sarah Cochran at firstislandsonbnb@gmail.com or leave a message at 419/285-4448. Now you can get most of your Holiday Shopping done early so let's make this year's bazaar the best one yet!



## Purple Martin Banding *By Lisa Brohl*

The Green Creek Wildlife Society and Paula Ziebarth arranged a program on July 6 to band the young purple martins at the nesting gourd rigs at the Scheeff East Point Preserve. Tom Kashmer, Lisa Rock, Paula Ziebarth, David and

Kim Myles, John and Peggy Leopold, Alice Lenz, and AmeriCorps intern Emma Young all pitched in to help. Lots of visitors came out to see the birds up close. What a great opportunity! Tom Kashmer reported that 174 young purple

martins were banded at the Scheeff East Point Preserve. They also banded 132 birds at Paula Ziebarth's house and 39 at her neighbors, Audrey Borchert. Thanks to Paula Ziebarth and all our volunteers for the great gift of the purple martin colonies!



Photos: Clockwise from left—Paula Ziebarth and David Myles remove birds from nest gourds for banding photo by Emma Young; Lisa Rock, Tom Kashmer, and Kim Myles band birds and record data photo by Emma Young; Peggy Leopold and granddaughter at the banding photo by Lisa Brohl; Alice Lenz shows the birds to young observers photo by Lisa Brohl; Lisa Rock shows purple martin young to Blair and Annabelle Trunk photo by Lisa Brohl; Purple Martin banding at Scheeff; Visitors getting a close-up view!

# A Special THANKS...

Thanks to Art Otermat for keeping an eye on the Jane Coates Wildflower Trail for us-and making sure trail obstructions are visible.

Thank you Julene Market for writing thank you notes for our LEIC donations!

Thank you Melinda McCann for cleaning the trail in the spring at the Jane Coates Wildflower Trail and beginning to organize our office at the airport.

Marty Faris and her daughter Megan Gau picked up, folded, and mailed our June newsletter. Thanks so much for this huge job!!



Kristin Parrish is shown here with her parents Dan and Becky Parrish visiting the island during the Island Green Week EcoTour in early August. Kristin's Trail Challenge booklets have been a big hit this summer and she is compiling data for us on how many people are using the trails and how they found out about us!

A big thank you to volunteer Michelle Pennington for putting together a great Island Green Week special edition with Renee Market! Kate Ptak and Lisa Brohl folded and prepared the box holders to let all the island know about the great events planned.



Thank you to this group of 7th graders from Laurel School for pulling garlic mustard at the Jane Coates Wildflower Trail on September 4. They pulled the first year rosettes after having a program on Edible Plants with Lisa Brohl at the Lake Erie Islands Nature and Wildlife Center.



Kate Ptak with painting she donated for Lake Erie Wing Watch! Thank you Kate!

Thanks Chris for getting our dock sign back up at the Middle Bass Island East Point Preserve! This was the third time it had been washed off with high water- hopefully it will stay put now. Thanks also to Chris for his hard work in mowing and maintaining our walking path and bird banding lanes at the preserve..



Ken Farber worked to clear around the purple martin gourd nesting rigs and the tree swallow nest boxes at the Scheeff East Point Preserve late this summer. The last portion of the trail had been underwater and underused-Ken cleared the vegetation that had grown up in the trail making it passable again.



Tina Larson who organized our Middle Bass Poker Kayak Day last Saturday realized that our Lake Erie Islands Water Trail signs were hard to see from the water-so she painted above and below the sign! Thanks Tina for all your help!

Thanks goes out to Burns Pierce for his help in keeping our trails safe at the Jane Coates Wildflower and Scheeff East Point Preserve this summer. The blue ash at the Jane Coates Wildflower Trail are starting to succumb to the emerald ash borer and the shoreline erosion at the Scheeff Preserve are sending down cottonwoods and willows along the lakeshore.

We appreciate Mike and Joe Byrnes for answering our call this year when we needed some help clearing the paths at our preserves as well.

# New and Renewing Members

## Friends

Aimee Arent-Trash and  
Treasures  
John and Ellen Ballas  
Audrey Borchert  
Karen and Mike Cummings  
Rob and Maria Hard  
Bill and Lois Jellison  
Bruce Miles  
Debby Parker  
Maisie Ruchala  
Joe Rutter  
Jeanine Steinle

## Supporters

Gordon Barr  
Kevin and Cindy Becker  
Mark Berens  
Jackie Taylor and Glenn  
Cooper  
Cheryl and Tony Damico  
John and Patricia Fisher  
Dave and Linda Frederick  
Mark and Marguerite Frey  
Ed and Paula Hubner  
Tamara Jones  
Middle Bass on the Web, Mike  
and Jean Gora  
Carole Koscielny  
Mary and Ken Schilstra

## Contributors

Patty and Ray Arth  
Brian Betz and Dianne Kestler-  
Betz  
Audrey Borchert  
Steve and Jill Cooks  
Joan Copeland  
Roberta and Ronald Greene

Brad Ohlemacher  
Michael Renz  
Rob (Sky) Sylak

## Stewards

Freshwater Sensations LLC,  
Christy Ontko  
Chris and Carl Krueger, The  
Brewery at the Bay, LLC

## 2019 Friend Membership with Ad

Marv Booker-The Boardwalk

## Employer Matching

### Contributions

Dianne Kestler-Betz-First  
Energy

### Donations

Chris and Lori Ann Zeitler, J. F.  
Walleyes  
Firelands Audubon  
South Shore Marine Lake Erie  
Assets and Operations, LLB-  
MB Music Fest  
Michael Durinsky III, United  
Way Employee Giving, First  
Energy  
Catawba Curve LLC, Reel Bar-  
Bar Stool Challenge Donation  
Gayle Rini-Curtis

### Donations in Memory of

#### Patrick Myers

Ron and Audrey Borchert  
Linda and Joe Shull



## Life Members

John Baker  
Jon D. Brausch  
Russ & Lisa Brohl  
Valerie Chornyak  
Alan & Stacey Clink  
Gary and Carol Coates  
Frederick Fether  
Christian L. Geiss  
Richard Gump  
Scott Jackson  
Judy and Joseph Janicki  
John & Paula Ladd  
Georgia MacVean  
Julene Market  
Elaine and Howard Martens

Mary Ann McCann  
Valerie Mettler  
Greg Millat  
Mark Nemec  
Roger & Mary Parker  
Hank & Gayle Polcyn  
Carol Richardson  
Richard and Carol Roberts  
Fritz and Pam Rudolph Fund  
of the Toledo Community  
Foundation  
Mary L. Staley  
Kristin Stanford  
Matt Thomas  
  
New Life Members  
Marv and Pat Booker  
Jim and Betsy Brohl

## Donations in Memory of

### Barbara and Mark Barnhill

Jane Bell  
Belinda Barnhill Bengry  
Lauren R. Mooney  
Stein Family Foundation Fund  
of the Jewish Community  
Foundation

## Donations to the Put-in-

### Bay Township Park

### District Stewardship Fund

Eli Ralich  
Deanna Raggozine, Tony  
Villers and Karen J. Arnold  
Daniel J. Vician, Trustee of the  
Roy Curtis remainder Trust  
Burgundy Bay Association



**Don't forget!**

**Become an  
annual  
sponsor of**

**our newsletter for \$100.  
Place an ad in our  
newsletter and receive  
an annual Friend  
Membership FREE!  
Call 419-366-2087**

# THANK YOU!

*Yellow-Bellied Flycatcher by Lisa Brohl*

## Summer of the Silk Moths *By Lisa Brohl*

This summer both Lisa Brohl and Sheri Kowalski reported finding the beautiful luna moth on the west side of the island. Lisa also found two other members of the silk moth family-a cecropia moth shown here at the Scheeff East Point Preserve and this polyphemus moth at her home on Mitchell Rd. This is encouraging as they have not been noticed since the aerial spraying we had for gypsy moths some years ago.



*Photos: Luna Moth; Cecropia Moth; Polyphemus Moth*

Put-in-Bay, Ohio  
Celebrate Island Style  
**PUT-IN-BAY CHAMBER**  
419-285-2832 • VISITPUTINBAY.COM

**Heineman's**  
OHIO'S OLDEST FAMILY OWNED AND OPERATED WINERY SINCE 1889  
978 Catawba Ave.  
Put-in-Bay, OH  
419-285-2811  
Visit the Winery, get a snack and try a few wines at the Wine Garden, tour Crystal Cave, or even do all three. We promise you'll have fun!  
www.heinemanswinery.com

**MILLER BOAT LINE**  
FERRIES TO PUT-IN-BAY & MIDDLE BASS ISLAND  
800-500-2421  
Millerferry.com

## LEIC Membership Form

Membership Notices are sent out annually-  
this is for new memberships-share with your friends

\_\_\_\$25 Friend    \_\_\_\$50 Supporter    \_\_\_\$100 Contributor

\_\_\_\$100 Friend/AD    \_\_\_\$250 Steward    \_\_\_\$500 Patron



\_\_\_\$1000 Life

Name \_\_\_\_\_

Spouse/Companion \_\_\_\_\_

Island Address PO Box \_\_\_\_\_ Put-In-Bay, Ohio 43456

E-mail \_\_\_\_\_

Permanent Address \_\_\_\_\_

City \_\_\_\_\_ State \_\_\_\_\_ Zip \_\_\_\_\_

Phone # \_\_\_\_\_ Cell # \_\_\_\_\_

Island # \_\_\_\_\_

**In addition to my membership, I would like to donate to:**

### Land Protection Fund

I would like to contribute \$ \_\_\_\_\_ to the Lake Erie Islands Conservancy, to be used only for expenses related to the purchase of land.

I understand that I will receive a *Certificate of Donation* for income tax purposes.

### Stewardship Fund

I would like to donate \$ \_\_\_\_\_ to the Stewardship Fund to help maintain those properties owned by the Lake Erie Islands Conservancy.

Please make checks payable to (LEIC) Lake Erie Islands Conservancy

Please Send to: PO Box 461, Put-in-Bay, Ohio 43456

All donations are tax deductible.

**Thank You!**



IN MEMORIAM

Patrick Myers

We were saddened with the news of Member Patrick Myers death. He has been a staunch supporter for years-often hosting us on WPIB to advertise our events and programs. He will be sorely missed by us all.



IN MEMORIAM

Dean Sheldon, Jr.



Photo: Sheldon Marsh State Nature Preserve—part of the 472 acre wetland wonderland preserving the habitat of countless wild plants and animals. We are grateful.

Sadly, long time LEIC member Dean Sheldon, Jr. passed away in July.

Dean was one of the founders of both Firelands Audubon and Erie MetroParks. Dean's family owned and enhanced the land now known as Sheldon Marsh SNP. Our natural areas and our lives are much richer thanks to Dean.

He also was a great source of advice over the years for our Conservancy as well.

A few of his friends and acquaintances will gather for bird watching on September 28, 2019 at 8:00am at Sheldon's Marsh State Nature Preserve with friends gathering there under a tent in the parking lot at 10:00am to share remembrances.

<http://naturepreserves.ohiodnr.gov/sheldonmarsh>

## Staghorn Sumac or Tree of Heaven *By Lisa Brohl*

Master Gardener and LEIC Board Member Peggy Leopold shared the following article "Tree of Heaven vs. Sumac: How can you tell the difference?" by Thomas deHaas and Ann Chanon on the difference between the native staghorn sumac tree (*Rhus typhina*.) and the invasive non native tree of heaven (*Ailanthus altissima*.) We have both on the island and both at our preserves.

Unfortunately, there were several tree of heaven found at the Dodge Woods Preserve which have been cut and the stumps painted with herbicide to kill the tree. These trees will take over an area if left. We have permission to remove two large tree of heaven from the adjacent Dodge property. Tree of heaven were introduced from Asia and planted as street trees but have now escaped cultivation and cause problems as they crowd out our native trees -they are prolific seed producers with little wildlife value.

Staghorn sumac is an early successional native tree-comes up about everywhere that



Photo: Both Tree of Heaven and Sumac shown here shared from article. Lower area is red fruits of Sumac, upper part brown fruit of Tree of Heaven

the land is allowed to revert from mowed grass. Eventually it is shaded out by other trees like maple, hackberry, basswood or oaks here on the island. It is not poisonous and as a matter of fact, a lemonade like beverage can be made from the red berries in the late summer/fall.

<https://bygl.osu.edu/index.php/node/1346>

PO Box 461  
Put-In-Bay, Ohio 43456  
Phone: 419-366-2087  
E-Mail: [leiconservancy@gmail.com](mailto:leiconservancy@gmail.com)

PLACE  
STAMP  
HERE

*We're on the Web!*  
[www.lakeerieislandsconservancy.org](http://www.lakeerieislandsconservancy.org)

*Save paper-time-and money!*  
*Have your newsletter emailed to you!*  
Email: [jd4mb2011@gmail.com](mailto:jd4mb2011@gmail.com)

**Board of Directors**

**Chairperson**

Lisa Brohl

**Secretary/Treasurer**

Kelly Faris

**Board Members**

Susan Byrnes - Marsha Collett

Ken Farber - Dustin Heineman

John Ladd - Peggy Leopold

Bruce Miles

Linda Shull - Kristin Stanford

Nancy Welter

Paula Ziebarth

**Advisory Council**

Carol Richardson - Richard Gump

John Dodge - Julene Market - Bob Russell

**Newsletter Editors**

Lisa Brohl

Michelle Pennington

Lots of events coming up this Spring and Summer—keep checking our website and Facebook pages for more info!



**November 21, 2019 for LEIC-LEINWC Holiday Bazaar**

**December 15, 2019 for Audubon Christmas Bird Count-Lake Erie Islands Count Circle**

**July 18, 2020 for Middle Bass Music Festival 2020**



A **HUGE** Thanks to Bostwick-Braun for printing assistance!!



The high water caused some challenges this summer to those that use our trails. But the wildlife adjusted-snakes and birds were in different spots. A new nonnative plant showed up at Scheeff with the high water too-flowering rush (inset photo).