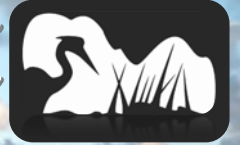


ISLAND

Lake Erie Islands
Conservancy
Presents



GREEN SCENE

Lake Erie Islands Conservancy Quarterly Newsletter

Spring 2020

The Amazing Birding Bartlett's *By Lisa Brohl*



Photos: Left—Paula Bartlett with northern cardinal; Right—Tom Bartlett with Carolina wren

Do you recognize these two people? Our Lake Erie Islands Conservancy owes them a lot. Tom and Paula Bartlett have been spending a good portion of their lives banding birds and educating visitors and residents about the importance of migratory birds. Providing us with just the data we need to show granting agencies how important our island woods, wetlands, and

shoreslines are to preserve. And they make birding so much fun that everyone comes away loving birds!!! We dedicate this issue to all they have done for us. Sit back and read about all the projects. Then come visit or volunteer at the banding stations or donate to keep this valuable program running. There's a bird banding wish list in this issue too!

Our Mission:

To encourage conservation and Protection of Natural and Agricultural Lands in the Lake Erie Islands for the Benefit of Future Generations.



FUTURE GENERATIONS

Speaking of Future Generations.... Juliana and Kate Scarpelli helping raise funds at the Lake Erie Islands Nature and Wildlife Center table at the LEIC/LEINWC Holiday Bazaar. More on pg. 18!

In This Issue:

Avian Research Report 2019	8-9
Native Plant and Tree Sale	11-12
LEIC Financial Report 2019	15
Volunteers	20
AmeriCorps Intern Position	23
Membership Form	23

Upcoming Events:

Middle Bass Music Festival	10
Spring Events	20
**COVID-19 Cancellation/Warnings	24

Grants Report *By Lisa Brohl*

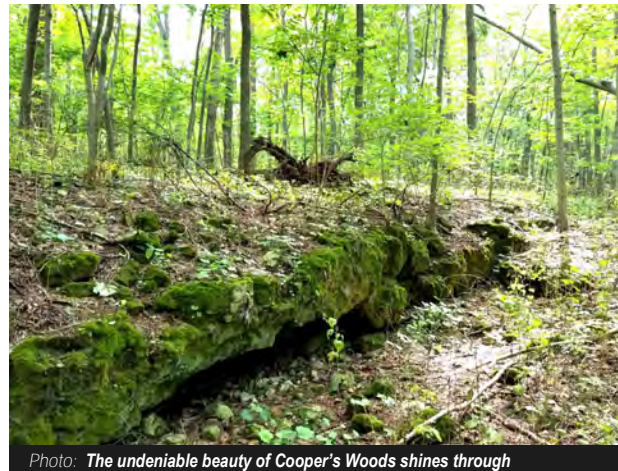


Photo: The undeniable beauty of Cooper's Woods shines through

The Lake Erie Islands Conservancy is working toward the closing on the Coopers Woods Preserve. Grant funds were on their way at the time of this newsletter writing. Hopefully we will have good news to report in our next issue!

The LEIC is applying for an Ottawa County Community Foundation grant to assist with the financing of the Great Lakes Islands Alliance annual meeting to be hosted by the Lake Erie Islands in October

The Put-in-Bay Township Park District received grants from The Conservation Fund to purchase Middle Bass Island East Point Preserve Addition and to purchase 2.53 acres from the Benjamin family on South Bass. Progress has begun on the Clean Ohio Conservation fund grants that have been received for the Middle Bass East Point Addition

and the Dodge Woods Addition. The remainder of the Benjamin purchase is funded by a Land and Water Conservation Fund grant.

(Continued on page 3)

Wildlife Diversity Conference

A busy day for the Lake Erie islands Conservancy and the Lake Erie Islands Nature and Wildlife Center at the Ohio Wildlife Diversity Conference held March 4 at the OSU Student Union. Thanks to the Ohio Division of Wildlife for all the great speakers and opportunities to network with other

organizations and over 1,000 attendees! Several LEIC Members were drawn by the theme “Undercover: The Unseen World of Wildlife” and learning just how important understanding nature’s delicate balance is.



Photos: Top Row—Lisa Brohl, Karen Jennings, and Tom Kashmer of the Green Creek Conservation Society; Lisa Brohl and LEIC Board Member Paula Ziebarth; Conference attendees viewing all of the wonderful information Bottom Row—Kristin Parrish with Trail Challenge; LEINWC Director Renee Fultz and LEIC Chair Lisa Brohl; LEINWC Director Renee Fultz and LEIC Chair Lisa Brohl; Karen Jennings, newsletter Editor Michelle Pennington, and Road Scholar attendee Serie Zimmerman



Donations *By Lisa Brohl*



Photo: Lisa Brohl with Tammy Luebke of Hartung Title at closing

Lisa Brohl formally accepted the donation of a parcel on Middle Bass Island formerly owned by Ron and Marianne Manderbach on February 3. Thank you again Ron and Marianne Manderbach!

Pollinators are Important—Seriously *By Lisa Brohl*

Pollinators are a very important but often overlooked component of our environment. Not only bees but also wasps, butterflies, moths, beetles, hummingbirds and more all act as pollinators of both our native plants and cultivated plants.

Some native plants have unique adaptations/relationships with only a few pollinators that have evolved to uniquely pollinate that plant or plant family. For instance, watch bumblebees pollinate Dutchman breeches this spring—they make a small slit in the side of the blossom to reach the nectar and pollen inside. You will see their full pollen sacs as they fly from one patch to another. So what can you do to help? Plant native plants that pollinators are used to using in your yard—check out our Native Plant sale on page 11.

The Ohio Division of Wildlife put out a new booklet this spring on what to plant in a garden for butterflies and other pollinators. This new booklet is great and will be available at the LEINWC this summer. Please make sure to minimize the use of pesticides, herbicides, and fungicides in your yard as they can have a negative effect on pollinators.



Photo: Dutchman’s Breeches emerging this spring!

Utilize the link below to learn more about pollinators and how incredibly diverse they are. <https://thestacker.com/stories/4007/honeybees-honey-possums-20-facts-about-pollination>

The Put-in-Bay Township Park District also received notification that they received a Recreational Trails Program grant for \$99,677 for a boardwalk at the Lawrence Evans Preserve on Middle Bass. No contract has been

signed yet so the work will not proceed until 2021 when hopefully Lake Erie water levels will be lower.

It has been a busy year for the Conservancy and Put-in-Bay Township Park District. You can see some of the island beauty in the below photo series showing winter on the Islands.

Experiencing a Beautiful Bass Islands Winter



Photos: Clockwise—American Robins drinking from bench icicles at Massie Cliffside by Sandy Funtal; Sandy Funtal at Massie Cliffside taking photos; Pancake ice at Scheeff East Point Preserve by Susan Ferguson; Icy cliffs at the Massie Cliffside Preserve by Lisa Brohl; Red-tailed Hawk by Sandy Funtal; Frozen cliffs at Massie Cliffside by Susan Ferguson; Sunset at Massie Cliffside Preserve by Sandy Funtal; Great horned owl silhouette by Gay Pippert





6th Middle Bass Island Poker Kayak Day!



Sat., August 1, 2020
12 p.m.– 4 p.m.

To BENEFIT signage for the MBI preserves!

(part of Put-in-Bay Township Park District)

To HIGHLIGHT the coastal MBI preserves and the MBI State Park!



Start no later than 1:00 P.M., depending upon your kayaking leisureliness! (Well, there IS a finish time limit.)

- ◆ Start: MBI State Park Beach (W side of MBI State Park) – Sign In. Get 1st poker card.
- ◆ Stop #2: MBI State Park shore (E side of MBI State Park) by MBIYC – Get 2nd poker card + banana.
- ◆ Stop #3: MBI East Point Preserve (S side of East Point) – Get 3rd poker card + granola bar.
- ◆ Stop #4: MBI Swamp Cove at Kuehnle Wildlife Area – Get 4th poker card + sport drink for the long haul.
- ◆ Stop #5: MBI State Park Campground – again! Get 5th poker card + hot dog, chips, bottle of water.
- ◆ (Direction and sequence of stops subject to change due to lake and weather conditions.)
- ◆ Feel free to get out and walk around at any of the stops!

Because of people's different schedules and kayaking abilities, one need not be present to win! (We'll tell you!)

- ◇ 1st prize: Round trip ferry boat tickets for 2 adults and 1 vehicle (for PIB or MBI)
- ◇ 2nd prize: Gift card to Middle Bass General Store
- ◇ 3rd prize: Steaks from Costco

1. Mark your calendar.
2. Fill out registration form. (you will get map & kayak # at start)
3. Sign "Waiver and Liability Release" form.
4. Mail or hand registration form + signed release + check/money order payable to:

"Put-in-Bay Township Park District" to:
Tina M Larson
1245 North Shore Drive
Middle Bass Island, Ohio 43446

Questions? Email: tmlarson@umich.edu
(Sorry OSU & MSU fans...) or call: 248-320-4529

Cost is \$20 pre-registration — \$25 on-site – BUT YOU CAN DONATE MORE TO BENEFIT THE PRESERVES!!

In case you're feeling generous to fund whole or in part: consider a large entrance sign \$1500; 17"x22" interpretive trail sign \$200; (donor name/s on signs included); recycled plastic bench including name/s info inscription & installation \$2000.

For registration forms, go to <https://bit.ly/2020-poker-kayak-day>, stop at the Lake Erie Islands Nature and Wildlife Center or at the Middle Bass Island State Park or e-mail at tlarson@umich.edu or leiconservancy@gmail.com.

Sponsor Native Cavity Nesting Birds *By Lisa Brohl*

We are so lucky to have board member Paula Ziebarth in our community educating everyone on the importance of bird habitat and nest box maintenance for purple martins, tree swallows and other birds on the island. We are grateful to member Darlene Sillick for finding funding for us for our purple martin gourd rigs at the Scheeff East Point Preserve.

But we need more to keep our program going. There are constant maintenance needs for the boxes, poles, baffles, gourds, etc. Paula has suggested a sponsorship program by which you donate \$125 to have your name or honoree of your choice commemorated with a plaque placed on one of the tree swallow boxes at the Scheeff East Point Preserve or one of our house wren boxes at Dodge Woods Preserve. If not interested in commemorative plaque, you may prefer to simply sponsor birds with an annual gift of your choice. If interested in this program, contact Paula at paulazbird@gmail.com.



Photos: Greg and Paula Ziebarth put up the Purple Martin Court at the Scheeff East Point Preserve this spring



The Candy Bar
170 Delaware Avenue
Put-in-Bay, Ohio
419-285-2920

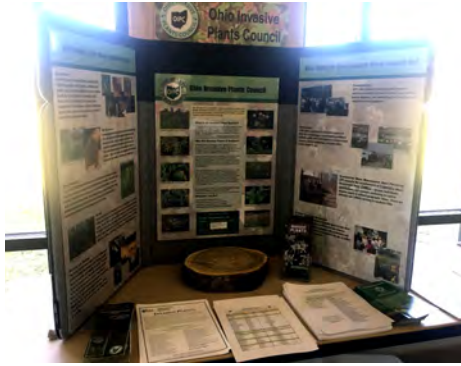
Handmade chocolates, fudge, saltwater taffy, ice cream and over 500 kinds of candies!
(Find us on Facebook!)

Support Lake Erie Islands Conservancy by shopping at AmazonSmile.

When you shop at AmazonSmile, Amazon will donate to Lake Erie Islands Conservancy. Support us...

SMILE.AMAZON.COM

Ohio Invasive Plants Council Meeting *By Lisa Brohl*



Lisa Brohl attended the annual Ohio Invasive Plants Council on Friday, February 21, 2020 at the Blacklick Metro Parks Golf Course. This organization is working on the invasive plant issue in Ohio. The Council has been hard at work with the Ohio Department of Agriculture to produce a list of plants that can no longer be sold in Ohio because of their invasive characteristics (<https://www.oipc.info/uploads/5/8/6/5/58652481/>

[invasive_plants_of_ohio.pdf](https://www.oipc.info/uploads/5/8/6/5/58652481/oipcassessedplantlist-handout2019.pdf)). Each year updates will occur to this list to be found at <https://www.oipc.info/uploads/5/8/6/5/58652481/oipcassessedplantlist-handout2019.pdf>.

Speakers presented on the newest wetland invaders in Ohio—hydrilla, yellow heart and the dreaded frogbit found already at the North Pond at Kelleys Islands. Everyone is urged to send any photos of these nonnatives to I-Naturalist (<https://www.inaturalist.org/>).

Invasive Plant Species: ...a species that is non-native (or alien) to the ecosystem under consideration and whose introduction causes or is likely to cause economic or environmental harm or harm to human health. Invasive species can be plants, animals, and other organisms (e.g., microbes). Human actions are the primary means of invasive species introductions. - *National Invasive Species Council*

"...usually characterized by fast growth rates, high fruit production, rapid vegetative spread

and efficient seed dispersal and germination. Since these plants are not native to Ohio, they lack the natural predators and diseases which would naturally control them in their native habitats. - *Ohio Department of Natural Resources, Division of Natural Areas and Preserves*

The Council also publishes a list of native alternatives (<https://www.oipc.info/uploads/5/8/6/5/58652481/alternativelist.pdf> and https://www.oipc.info/uploads/5/8/6/5/58652481/alternatives_for_invasive_plants.pdf) to plant in your yard or use in landscaping. The LEIC also has a native plant/tree sale coming up. See page 11 and 12 in this issue or got to our website at www.lakeerieislandsconservancy.org.

NOTE: *Please be careful not to throw your landscaping waste into the woods—you may be introducing harmful invasive plants like english ivy, wintercreeper, or periwinkle (vinca)*

Ohio Bluebird Society Conference



LEIC Chair Lisa Brohl and newsletter editor Michelle Pennington attended this conference filled with speakers on cavity nesting birds and ways to provide nesting boxes and habitat for them February 29, 2020 at Ashland University. LEIC member Darlene Sillick did most of the organizing for this very educational opportunity.

LEIC board member Paula Ziebarth won the Blue Feather award for her volunteer work with purple martin, eastern bluebirds, and tree swallows. (Paula had a prior commitment and was not able to attend to receive her award in person.)

Lisa Brohl, shown here with Michelle Pennington, won the Conservation award on behalf of the bird conservation work done by the Conservancy on the Lake Erie Islands. The late LEIC member Dean Sheldon had nominated Lisa for the award. She is shown here with Dean's wife Carol.



Photos: Clockwise—Photo of slideshow presented during the announcement of LEIC board member Paula Ziebarth as she won the Blue Feather award; LEIC Chair Lisa Brohl with newsletter editor Michelle Pennington after she won the Conservation award; Lisa Brohl and Carol Sheldon during a conference break; Lisa speaking to conference attendees after presentation of her award



GREAT LAKES
ISLANDS ALLIANCE

2020 Great Lakes Islands Summit

The 4th Annual Meeting of the Great Lakes Islands Alliance

October 4-7, 2020

Hosted by the Lake Erie Islands

The summit will bring together 100+ island leaders including: government officials, business and education leaders, along with other island advocates to discuss the challenges and opportunities associated with island living. Any island residents are welcome to attend. The annual summit also serves as the member meeting of the Great Lakes Islands Alliance (GLIA), a bi-national network of Great Lake island communities. For more information visit:

www.greatlakesislandsalliance.org



Approximate location of
15 GLIA Member Islands

Be involved....

Become a sponsor!

The 2020 GLIA Summit host committee with representatives from Kelleys, Middle Bass, Pelee, and South Bass Islands seek sponsors and donors to support the Annual Great Lakes Islands Summit. The Stewardship Network serves as fiscal sponsor for gifts and donations.

By sponsoring this event you will help:

- Foster peer-to-peer connections between island communities
- Share innovative solutions to island specific challenges
- Participants learn from each other by sharing tools and case studies on topics including tourism and economic development, cultural and historical preservation, workforce housing, and environmental conservation.



Photo courtesy of the Mackinac Town Crier

Attendees of 2019 GLIA Summit

GLIA Mission:

"To encourage relationship building, foster information exchange, and leverage resources to address shared challenges and embrace opportunities to benefit islands."

2020 Sponsorship Levels

	Lake Superior \$2500	Lake Huron \$1500	Lake Michigan \$1000	Lake Erie \$500	Lake Ontario \$100
Sponsor name listed in program	✓	✓	✓	✓	✓
Recognition at event	✓	✓	✓	✓	
Sponsor name promoted on event website	✓	✓	✓		
Event registrations	2	1			

All checks should be made out to **The Stewardship Network**

Include GLIA Summit in the memo line.

If you would like to donate an item or sponsor a specific part of the conference such as the keynote speaker, coffee breaks, or field trips, please direct inquiries to:

Peter Huston, Director
Put-in-Bay Chamber of Commerce
ambassador@visitputinbay.com
(419) 285-2832



The Stewardship Network is a nonprofit 501(c)3 organization acting as fiscal sponsor. If you would like to support GLIA programming and the annual conference with a sponsorship, checks should be made out to *The Stewardship Network* with *GLIA Summit* in the memo line. Other financial questions should be directed to:

Lisa Brush, Director
The Stewardship Network
416 Longshore Drive, Ann Arbor, MI 48105
lbrush@stewardshipnetwork.org
(734) 996-3190



Photo courtesy of Kristy Beyer

Photos from 2019 GLIA Summit on Mackinac Island, WI.

Top: Participant providing feedback on summit.
Bottom: Participants attend breakout discussion on topics of interest.



Photo courtesy of Matt Preisser

2019 Lake Erie Bass Islands Avian Research Program Report

2019 Lake Erie Bass Islands Avian Research Program Report H. Thomas Bartlett

History

In the early 2000's, the Lake Erie Islands Historical Society began sponsoring two Elderhostel programs on South Bass Island. One dealt with fishing and the other with natural history/wine making of the islands. The popularity of evening natural history programs and optional morning bird walks soon led to a birding Elderhostel. In 2003, I was asked by Lisa Brohl, one of the leaders of the Elderhostel, to present a one-day program on bird banding and give a demonstration. The demonstration was conducted on a 20 acre property owned by Mark and Barb Barnhill on the eastern most part of the island. The program was a success and I have been asked back each year. In the summer of 2006, I retired from teaching. Lisa called and asked if I would work the week-long Elderhostel. I agree and banding increased. The Elderhostel has changed its name to Road Scholar, opening up to a wider group of people and is now run by the Lake Erie Islands Nature and Wildlife Center on South Bass Island. Over the years the Road Scholar programs have increased to 6 weeks during spring and fall. Lisa is also the chair of the Lake Erie Islands Conservancy and on the Board of the Put-in-Bay Park District. These organizations have used the data we've gathered to help secure funds to buy and protect land on the Bass Islands. In 2009, we started a banding project on Middle Bass Island. In 2010, one of my sub-permittees, Dr. James Marshall working at Stone Lab, began expanding our efforts with a summer banding project on North Bass Island. The North Bass Island summer study involves avian use of the remaining vineyards on the island. This data gives an idea of which species of birds are using the islands for breeding, wintering, and stopover during migration. It shows that the Lake Erie Islands are critical for migrant birds. Over 25 natural areas have been protected on the Bass Islands with the use of our data. On Middle Bass Island, about 52.8 acres have been protected or will be and on South Bass Island, 63.1 acres have been or will soon be protected.

2019 Update

We now have bird banding data for South Bass (17 years), Middle Bass (11 years), and North Bass (10 years) Islands plus my long-term data set (24 years) from Kelleys Island. Banding data has been used to purchase and protect properties on South Bass, Middle Bass, and Kelleys Islands. In that time period we have banded over 29,951 individual birds of 119 species and 2 hybrids. The Put-in-Bay Township Park District, as owners of natural areas on South Bass and Middle Bass Islands, makes use of the banding data to help manage the properties for migratory and nesting birds as well as other wildlife. The Barnhill family, Put-in-Bay Township Park District, Lake Erie Islands Conservancy, Dr. William Cleveland, and the Lake Erie Islands Nature and Wildlife Center have supplied access and funding to assist in our banding projects again this year. As always, we are thankful for the support from Mark and Barb Barnhill for the use of their property on South Bass Island and assistance in our studies. However, 2019 has proven to be a very sad year for this great relationship. Early in the year, both Mark and Barb passed away. They will be sorely missed. This year's report is dedicated to their support and memory. I will always have fond memories of the two. It was always an enjoyable time at their place.

On Middle Bass Island, we have continued to receive much assistance, food, and lodging from Teddi Keith-Morris and Nancy Welter. In addition, the efforts of Ron Helman, Chris Helman and family to maintain the trails and net lanes at East Point Preserve have been extremely helpful. And thank you also to Tina Larsen, Ken & Ann Shelton and Lisa & Russ Brohl for their assistance to the banding operations. It is hoped that the banding projects can be continued in years to come. This past

year 550 individuals visited our Bass Islands research stations. 2019 was an excellent year for our research efforts on the Bass Islands. During the 2019 banding season, banding occurred on 43 days. 1943 individual birds of 83 species were banded on South Bass, Gibraltar, Middle Bass, and North Bass Islands. In addition, 214 banded birds were recaptured or recovered (178 individuals, some individuals were recaptured more than once). Of these, 53% (94) were banded prior to 2019. Two individuals were first banded in 2013, three birds in 2014, seven birds in 2015, eleven birds in 2016, twenty-seven birds in 2017, Thirty-six in 2018 and 81 individuals earlier in 2019. Our oldest recapture was a Northern Cardinal banded June 27, 2013 on Middle Bass Island as a after hatch-year male making it at least seven years old. The second oldest bird was a Red-winged Blackbird banded July 9, 2013 on Middle Bass Island as a second year female making her 7 years old. In addition, we heard from the Bird Banding Laboratory on a Tree Swallow that we recaptured in 2016. It was banded May 6, 2013 at Holiday Beach Conservation Area outside of Leamington, Ontario Canada. Thirty-one individuals escaped or were released before being processed. There were two casualties during the banding operations. Our rate for casualties this year was 0.09% of total birds handled, which is outstanding and says a lot about the skill of our extraction team. All this was done over 43 banding days and 2713.00 net hours. 2177 individual birds were handled this year and 0.59 birds were banded per net hour of effort and 0.68 birds handled per net hour.

The top ten most banded species for 2019 were:

339 Purple Martin	59 Common Grackle
284 Red-winged Blackbird	58 Swainson's Thrush
103 Ruby-crowned Kinglets	50 Magnolia Warbler
95 American Robin	46 Yellow-rumped (Myrtle) Warbler
86 White-throated Sparrow	45 Red-breasted Nuthatch

Over the last seventeen years of our banding effort, we have banded 12,776 individuals of 118 species on the Bass Islands and one hybrid. This was accomplished in 357 banding days and 23,307.75 net hours of effort resulting in 0.51 birds banded per net hour. This past year we banded two new species for the islands. They were Chimney Swift (1 on South Bass Island during the summer by Dr. Marshall) and a Tufted Titmouse (also on South Bass Island early this winter). The Tufted Titmouse is the first banded on the Lake Erie Islands and is considered very rare for the islands. Also, banded was one new hybrid, a Golden-winged X Blue-winged Warbler, on South Bass Island this past spring. In addition, another banding project continues with Purple Martins and Tree Swallows. It was taken over in 2017 by Thomas Kashmer and his crew, of Green Creek Wildlife Society and Black Swamp Bird Observatory. Their data is shared with us.

The top ten most banded species over the sixteen years have been:

2966 Red-winged Blackbird	480 Swainson's Thrush
1075 Purple Martin	420 Tree Swallow
931 American Robin	388 Yellow Warbler
569 White-throated Sparrow	325 Yellow-rumped (Myrtle) Warbler
494 Common Grackle	279 Ruby-crowned Kinglet

South Bass Island

On South Bass Island we banded 1067 individuals of 67 species in 2019. Two new species were banded. They were Chimney Swift and Tufted Titmouse. This was the first titmouse to be banded on the Lake Erie Islands. Over the seventeen years of this South Bass Island study, 101 species and 8,035 individual birds have been banded. This year we were able to band 7 days in the spring, three days in the fall, and three days in December. Dr. Marshall was able to band 10 days in the summer with his Stone Lab class. Again this year, the banding of the Purple Martins banded by Tom Kashmer and his team. In early December we again

2019 Lake Erie Bass Islands Avian Research Program Report

(2019 Avian Research Report Continued from page 8)

banded for three days at Lisa Brohl's feeders, one evening of owl banding at the Wildlife Center and two evening of owl banding at the Vineyard. We banded 58 individuals of 10 species. This also gave us a chance to continue to train some of our volunteers in bird extraction which will help us greatly in the future. Nancy Welter and Teddi Keith-Morris from Middle Bass Island came over to participate and work on their extraction skills. On South Bass Island we had 373 visitors to the banding stations.

Middle Bass Island

On Middle Bass Island we banded 718 individuals of 68 species in 2019. One new species was banded. It was two individual Golden-winged Warblers. This was done over 16 banding days, 1435.0 net hours. There were 8 escape/released birds and zero casualties. We handled 810 individual birds during 2019. Over the eleven years of this study on Middle Bass Island, 4041 individual birds of 103 species have been banded. On Middle Bass Island this year we had 171 visitors to the banding stations. The Beaver which showed up on the island in 2018, has survived and still working the pond area. We also managed to capture and release a Silver-haired Bat in the fall. This was a first for us and a good find for the preserve. One hundred and seventy-one people visited the banding station here.

North Bass Island

On North Bass Island we banded 58 individuals of 8 species in only three days of effort. One new species, Common Grackle, was banded. Over the last eight years of the North Bass Island study, 700 individuals of 24 species have been banded. This year we had one recaptured individual, an Indigo Bunting, which was banded earlier in the summer. During the year we had 6 visitors to the North Bass banding station. The State of Ohio's plan to remove the vineyards on North Bass Island appears to have changed and at least some of the vineyards remain allowing this study can continue. It would be nice to get addition banding data during spring and fall as well in the future. We are actively working on a Fall 2020 outing to the island in an effort to add some fall migration banding data.

2019 Data

The data for all banding activities in 2019 on the Bass Islands follows. Included are some historical data, birds banded, recaptures, and some observational notes for each island. A special thanks should be given to the volunteers and supporters of this project: Paula Bartlett, Mark & Barb Barnhill and family, Lisa & Russ Brohl, Jim & Betsy Brohl, Karen Dolej, Ken Farber, John Lortz, Dr. James Marshall, Dr. Andy Jones, Tina Larson, Alice Lentz, John & Peg Leopold, Teddi Keith-Morris, Nancy Welter, Shane Roberts, Ken & Ann Shelton, Chris Helman and family, Bob Stausmire, Gerald Shanley, Dr. William Cleveland, Susan Harrington, Doris Hubschman, the Lake Erie Islands Conservancy, the Lake Erie Islands Nature and Wildlife Center, Miller Boat Line, U.S. Fish & Wildlife Service, Ottawa County Community Foundation, and the Put-in-Bay Township Park District.

One area of improvement in 2020 will be to document all species of birds seen and heard during our work. These surveys will be noted on a daily checklist. Perhaps this data can be entered into eBird.



Photo: Tufted Titmouse banded at South Bass Island December 3 by Tom Bartlett. First tufted titmouse banded on the Lake Erie Islands by his crew—out of 28,000 plus birds banded in 24 years. Congratulations Tom!

Species	Species	Total	South Bass	Middle Bass	North Bass
Chimney Swift	1	1	1		
Ruby-throated Hummingbird	1	10	6	4	
Eastern Screech-Owl	1	3	2	1	
Red-bellied Woodpecker	1	1		1	
Downy Woodpecker	1	13	7	6	
Northern Flicker	1	2		2	
Yellow-bellied Flycatcher	1	2	2		
Least Flycatcher	1	20	15	5	
Eastern Phoebe	1	2	1	1	
Great Crested Flycatcher	1	1		1	
Eastern Kingbird	1	7	4		3
White-eyed Vireo	1	2	2		
Blue-headed Vireo	1	12	3	9	
Warbling Vireo	1	5	2	3	
Philadelphia Vireo	1	2		2	
Red-eyed Vireo	1	1		1	
Blue Jay	1	19	14	5	
Purple Martin	1	339	339		
Tree Swallow	1	40	38	2	
Barn Swallow	1	10	9		1
Black-capped Chickadee	1	23	16	7	
Tufted Titmouse	1	1	1		
Red-breasted Nuthatch	1	45	38	7	
White-breasted Nuthatch	1	5	2	3	
Brown Creeper	1	1	1		
House Wren	1	11	5	6	
Carolina Wren	1	7		7	
Golden-crowned Kinglet	1	2	1	1	
Ruby-crowned Kinglet	1	103	60	43	
Eastern Bluebird	1	5		5	
Veery	1	11	8	3	
Gray-cheeked Thrush	1	35	3	32	
Swainson's Thrush	1	58	22	36	
Hermit Thrush	1	14	1	13	
American Robin	1	95	61	34	
Gray Catbird	1	19	10	9	
Brown Thrasher	1	2		2	
European Starling	1	10	2	5	3
House Sparrow	1	15	15		
House Finch	1	8	8		
American Goldfinch	1	22	2		12
Chipping Sparrow	1	4	3	1	
Field Sparrow	1	3	2	1	
Savannah Sparrow	1	1		1	
Lincoln's Sparrow	1	6	5	1	
Swamp Sparrow	1	9		9	
White-throated Sparrow	1	86	14	72	
White-crowned Sparrow	1	3	1	2	
Dark-eyed Junco	1	13	12	1	
Baltimore Oriole	1	18	14	4	
Brown-headed Cowbird	1	14	7	7	
Red-winged Blackbird	1	284	183	70	31
Common Grackle	1	59	45	13	1
Ovenbird	1	15	8	7	
Northern Waterthrush	1	9	2	7	
Golden-winged Warbler	1	3	1	2	
Blue-winged Warbler	1	3	2	1	
BWWA X GWWA hybrid	1	1	1		
Black-and-white Warbler	1	12	3	9	
Tennessee Warbler	1	11	1	10	
Orange-crowned Warbler	1	2	1	1	
Nashville Warbler	1	19	9	10	
Connecticut Warbler	1	3		3	
Common Yellowthroat	1	13	6	7	
Hooded Warbler	1	1		1	
American Redstart	1	28	10	18	
Cape May Warbler	1	7	4	3	
Northern Parula	1	3	3		
Magnolia Warbler	1	50	36	14	
Bay-breasted Warbler	1	32	7	25	
Blackburnian Warbler	1	3	3		
Yellow Warbler	1	46	22	22	2
Chestnut-sided Warbler	1	4	4		
Blackpoll Warbler	1	44	1	43	
Black-throated Blue Warbler	1	22	11	11	
Palm Warbler (Western)	1	41	8	33	
Yellow-rumped Warbler	1	40	5	35	
Black-throated Green Warbler	1	7	6	1	
Wilson's Warbler	1	2	2		
Scarlet Tanager	1	1		1	
Northern Cardinal	1	27	23	4	
Rose-breasted Grosbeak	1	1		1	
Indigo Bunting	1	9	1	3	5
Total Individuals	83	1943	1167	718	58
Total Species		83	67	68	8
		Total	SBI	MBI	NBI
Banding Days		43	24	16	3
Owl Banding Days		4	3	1	0
Recaptures		204	120	83	1
Escapes/releases		31	23	8	0
Casualties		2	2	0	0
Total birds handled		2177	1308	810	59
Nets			14-20	9.5-22	9.5



Things are rolling along with the planning for the Middle Bass Music Festival for July 18, 2020! We are delighted to again have the Middle Bass Island Dock Company for our sponsor. Without dock company support we could not hold this event.

Committee of Chair Bruce Miles, Manager Dave Bugoci, Lisa Brohl, Lee Hisey, Chris Zeitler, and Jim Roesch of the Middle Bass Dock Company have been busy putting the event together. We look forward to the sounds of Cats on Holiday a Zydeco – Funk Folk Band from Cleveland, The Island Band, North Coast Goats, Sonic Boom fusion jazz from Middle Bass, and the Sam Hooper Blues Band from Cleveland We will be enjoying food vendors Jimmy G's, The Port Clinton Rotary Perch Wagon, beer from Catawba Island Brewing Company, and wine from Heineman's. Ice cream sundaes, shakes, and homemade pie will be for sale by Xtreme Cuisine.

Benny on Bass will be making an appearance again as he has become our

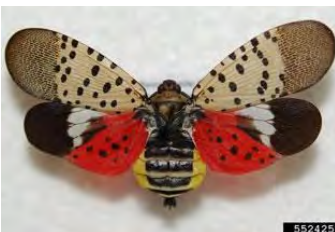
music fest icon. Watch for him on Facebook and our web page www.mbimusicfest.com

LEIC will be selling tee shirts and handing out a variety of information on our island activities.

There will be an extra Miller ferry at 7:00pm from Middle Bass to take back attendees-no cars. We have received a grant from the Lake Erie Shores and Islands and applying for one from the Ohio Arts Council for the event. We are looking for volunteers for the day of the event and island housing for band and vendors-contact us at 419-366-2087 at leinwc@gmail.com if you can help out this year.

We are also going to have table for local artists to sell their wares. Please contact us at 419-366-2087 or leiconservancy@gmail.com if interested in having a space at the festival.

Look Out! The Spotted Lanternfly is Bad News By Lisa Brohl



A scary new insect invader has been spotted in Pennsylvania. The spotted lanternfly (*Lycorma delicatula*), an invasive and very destructive insect from Asia, could reach Ohio as soon as this spring. This insect is a member of the Order Hemiptera (true bugs, cicadas, hoppers, aphids, and others) and the

Family Fulgoridae, also known as planthoppers. The ailanthus, commonly known as "tree of heaven" and also an invasive species from Asia, is their preferred food source. This was once a commonly planted tree and one

that we are working to get rid of at the Dodge Woods Preserve.

Lanternflies obliterate plants and trees by feeding on their sap. They produce a substance that blankets the leaves of plants and blocks photosynthesis. It also facilitates the growth of mold, which leads to rot. They are known to be very destructive to grape vines so it is something we need to watch for.

The Ohio Department of Agriculture is asking people to report any signs of the insects. Anyone who suspects they have seen lanternflies should call them at 614-728-6400 or email the department at plantpest@agri.ohio.gov. And this is one bug you should smash!

LEIC Native Tree & Plant Sale ORDER FORM

The Lake Erie Islands Conservancy (LEIC) is now taking orders for native trees and plants for the islands. We are using Riverside Native Trees, Quail Ridge Native Trees, and Natives in Harmony for our native tree and plant sale. Buying and planting native trees and shrubs is a great way to provide quality habitat for the birds, butterflies, moths and other wildlife on the islands. We are promoting the planting of native trees and shrubs because our native animals are adapted to feeding on these plants and using them for shelter. By planting native species, you are making your land more attractive to birds, bees, butterflies, moths and a host of other desirable pollinator species. This fundraiser will be used to support the LEIC land preservation and restoration programs!

Trees: Native trees and shrubs are for sale in 3-gallon containers. The varieties available are Swamp White Oak, White Oak, Bur Oak, Northern Red Oak, Chinquapin Oak, Black Willow, Sandbar Willow, Silver Maple, Sugar Maple, Sycamore, Kentucky Coffee Tree, and Ohio Buckeye. Shrubs offered are Fragrant Sumac, Silky Dogwood, Hoptree, Ninebark, Swamp Rose, Swamp Rose Mallow, Buttonbush, and Common Elderberry. Some larger stock are available in 15-gallon root bags. All these trees and shrubs are native to the islands and will thrive in this environment. They have been grown from Ohio seed stock by Riverside Native Trees in Delaware, Ohio. We are also offering small Ohio Buckeye and Eastern Red Cedar that have been island reared!

Plants: LEIC is also selling over 30 varieties of native perennial plants and flowers from Natives in Harmony from Marengo, Ohio. This year we are offering at least two wildflowers, Hairy Beardstongue and Clammyweed raised from seed from the island!

Order forms are available at www.lakeerieislandsconservancy.org or contact Lisa at 419-366-2087. Beautify your yard and support the Conservancy! Orders may be placed until May 1 and we will arrange a pick up on the island. For those on Middle Bass who wish to order, a pick up on Middle Bass will be set up as well. For Order Forms and any questions, please contact Lisa Brohl at 419-366-2087. ****Plants and trees will be delivered at a later date to be announced due to current Covid-19 pandemic and shelter in place orders.**

Send Order Form and Payment to: LEIC, P.O.Box 461, Put-in-Bay, OH 43456
Please make checks payable to LEIC-Add \$5.00 for shipping/handling - Thank You for your support!!





Name _____









Address _____

Phone _____ Email _____

Riverside Native Trees and Quail Ridge Native Trees Selection

	TREES	Qty	Size	Cost	Total
	Northern Red Oak - well drained		3-5'	\$40	
	Bur Oak - can withstand drought or wet conditions		2-3'	\$30	
			4-6'	\$40	
	Swamp White Oak - wet areas		2-3'	\$30	
	Chinquapin/Chinkapin Oak - wet or well-drained, high ph, rocks		4-6'	\$40	
	White Oak - can withstand drought or wet conditions		1-4'	\$30	
	American Sycamore - wet, banks and bottomlands		2-3'	\$30	
	Silver Maple - moist and fertile soil, swamps, streambanks, bottomlands		2-3'	\$30	
	Sugar Maple - moist and fertile soil, well-drained, can tolerate poor, rocky soil		3-4'	\$35	
	Kentucky Coffee Tree - moist and alkaline soils - perfect for the Island		3-4'	\$35	
	Black Willow - can withstand drought or wet conditions		4-6'	\$40	
	Sandbar Willow - moist to wet, temporarily tolerates standing water <small>photo "Salix nigra streamside culture 2001-06-04" by Curtis Clark</small>		5-6'	\$40	
	Ohio Buckeye - tolerates partial shade and almost any soil except dry		2-3'	\$25	
	Ohio Buckeye (SBI Reared!) - tolerates partial shade and almost any soil except dry		1'+	\$20	
	Eastern Red Cedar (SBI Reared!) - moist to swampy, tolerates poor, dry soil		1-2'	\$20	
	Total				

	15-Gallon Root Bags (Trunk Measurement by Caliper)	Qty	Size	Cost	Total
	Swamp White Oak - wet areas		1 1/2"	\$175	
	Red Oak - well drained		3/4"	\$100	
	Bur Oak - can withstand drought or wet conditions		1 1/2"	\$175	
	Black Cherry - moist but well-drained soil, strong valuable timber		1"	\$125	
			3"+	\$250	
	Total				

	SHRUBS	Qty	Size	Cost	Total
	Buttonbush - shorelines and swamps, moist soil, full sun, flowering is poor in shade or dry soil <small>photo "Cephalanthus occidentalis" by Ralfine Dorn (gardenista)</small>		3'	\$25	
	Swamp Rose Mallow - moist to wet, full sun <small>photo from Riverside Native Trees</small>		2-3'	\$25	
			3-6'	\$35	
	Swamp Rose - moist soil, creates colony/clump <small>photo by Bonnie Collins, BIA/MLA Landscape Architecture, University of Georgia - Photo used with permission</small>		2-3'	\$25	
	*Witch-hazel - wet to well drained, sun to part shade <small>photo by L. Brohl</small>		2'	\$25	
	Fragrant Sumac - well drained, use for banks, stabilizer <small>photo "Fragrant sumac fruiting" by Julia Gironax</small>		2-4'	\$25	
	Ninebark - drought tolerant, full sun to part shade, clay, loam <small>photo "Physocarpus opulifolius Arkansas" by Eric Hult</small>		3-4'	\$35	
	Hoptree - wet or well-drained, sun to partial shade <small>photo "Hesperis (Phlox arborescens)" by George Stickers</small>		1-4'	\$30	
	Common Elderberry - moist soil, creates clump quickly, sun <small>photo "Common Elderberry" by Jason Hollings</small>		2-3'	\$25	
	Silky Dogwood - moist soil, poorly drained, tolerates shade well <small>photo "Silky Dogwood (Cornus alternifolia) trees" by Chuck Evans, University of Illinois, Springfield</small>		3-5'	\$35	
	Total				

Tree Leaf Photos obtained from "What Tree Is It?" - DPLN-QUIS/CC-BY 3.0 [CC BY-NC-SA]

Natives in Harmony Plant Selection

Plants Names and Info	2.5" Pots (\$3) Qty.	Quarts (\$5) Qty.	Gallons (\$8) Qty.	Plants Names and Info	2.5" Pots (\$3) Qty.	Quarts (\$5) Qty.	Gallons (\$8) Qty.
Woodland Phlox (Wild Phlox, Wild Sweet William) - shade, woodland, spring				Virginia Mountain Mint - part shade to full sun, rocky, summer			
Nodding Wild Onion - sun, will grow in rocky ground, summer				Obedient Plant - sun, moist, summer, hummingbirds, butterflies			
Canada Anemone - sun or shade, damp, late spring-early summer				Cardinal Flower - full sun to shade, moist to wet, summer			
Wild Columbine - rocky, sun or part shade, spring				Great Blue Lobelia - part shade to full sun, wet, late summer-fall			
Spring Beauty - dappled sunlight, moist to slightly dry, rich loamy soil, spring to early summer				False Nettle - light shade, moist loamy soil, woodlands to swamps, mid-summer to early fall			
Frank's Sedge - full sun, moist to wet, fertile loamy or silty soil				Square-Stemmed Monkey Flower - part shade to full sun, moist to wet, summer			
Fox Sedge - full sun, sand to clay, moist to wet soil, clumping, late spring to early summer				Great White Trillium - moist humus-rich soil, shade, mid-spring to mid-summer			
Jack-in-the-Pulpit - shade, woodland, spring				Mayapple - shade, woodland, spring			
New England Aster - part shade or sun, late summer to fall				Boneset - full to partial sun, humus-rich, wet to moist soil, late summer to early fall			
Downy Wood Mint - full to partial sun, loamy to rocky, drought-tolerant, early to mid-summer				Appendaged or Great Waterleaf - dappled to light shade, moist conditions, rich loamy soil, late spring to early summer			
Butterfly Weed - sun, sandy to rocky, prefers drier areas, early summer-early fall				Clammyweed (SBI) - full sun, medium to wet, barren sand, gravel, or clay, drought tolerant			
Harebell - full sun to some shade, moist to dry, will grow in shallow rocky ground, early to late summer				Lake Erie Dense Blazingstar - full sun, sand to clay, medium to moist, birds, butterflies, hummingbirds			
Common Blue Violet - partial sun to light shade, moist loamy soil, prairie or woodland, mid to late spring				Hairy Beardtongue L.Erie - sun, fields and open areas, summer (Seeds harvested from SBI!!)			
Blue Vervain - part shade to full sun, late summer to early fall				*Gray-headed Coneflower - part shade to full sun, late summer-fall, moist soil			
Evening Primrose - sun, somewhat moist, prairies or thickets to lakeshore dunes, mid-summer to fall, honeybees, hummingbirds				*Black-Eyed Susan - full to partial sun, moist well-drained fertile soil, mid-summer to early fall			
Prairie Loosestrife - full to partial sun, moist to wet, loam to gravel, early to late summer				*White Turtlehead - sun, wet areas, late summer-fall			
Winged (Wing-angled) Loosestrife - full sun, wet to moist soil, poorly drained, mid to late summer				Switch Grass - part shade to full sun, moist to dry soils			
Red (Swamp) Milkweed - sun to partial shade, moist soil, mid-summer to early fall				Virginia Wild Rye Grass - tolerant of shade, moist soil			
Common Milkweed - full sun, moist to dry, all soils but prefers rich loamy soil, early to mid-summer				Canada Wild Rye Grass - full sun, prairie, any type of dry to moist soil, draws butterflies, pollinators			
Whorled Milkweed - full sun, moist to dry, all soils but prefers infertile soil, early to late summer				Purple Love Grass - full sun, dry, sandy or gravelly, late summer to early fall			
Wild Bergamot (monarda fistulosa) - full to partial sun, moist to dry sandy or loamy soil, fields and thickets, mid-summer to fall				Swamp (Crimson-eyed) Rose Mallow - full to partial sun, wet to moist, loam, silt, or some sand, mid-summer to early fall			
Virgin's Bower - full sun to shade, sand to clay, moist to wet soil, mid-summer to early fall: 6'-10'							
Quantity Totals				Quantity Totals			
Price Each	\$3.00	\$5.00	\$8.00	Price Each	\$3.00	\$5.00	\$8.00
Totals				Totals			

*NATIVE TO OHIO but not BASS ISLANDS

Total for all columns

\$

Earth Day 2020 *By Lisa Brohl and Renee Fultz*

50 Year Anniversary of the first celebration in 1970

The Lake Erie Islands will be honoring its Earth Week in 2020 with virtual and individual events to mark the 50th anniversary of the first Earth Day on April 22, 1970 due to the Covid-19 Pandemic and subsequent quarantine and shelter at home orders. There are many things we can do at home to make our earth a better place to live!

Senator Gaylord Nelson founded Earth Day after viewing a massive oil spill in Santa Barbara, California, in 1969. Senator Nelson hoped to use the same type of energy as the anti-war movement to forge public consciousness about air and water pollution. Senator Nelson announced the idea for a “national teach-in on the environment” to the national media.

On April 22, 1970, 20 million Americans demonstrated for a healthy, sustainable environment-against oil spills, polluting factories and power plants, raw sewage, toxic dumps, pesticides, freeways, the loss of wilderness and the extinction of wildlife. By the end of 1970, the first Earth Day led to the creation of the United States Environmental Protection Agency and the passage of the [Clean Air](#), [Clean Water](#) and [Endangered Species](#) Acts.

The Lake Erie Islands Conservancy (LEIC), Lake Erie Islands Nature and Wildlife Center (LEINWC) are putting a few virtual events together.

Participants that take part in the week’s events can win a reusable water bottle from the LEINWC by attending events and participating in activities as described on the Earth Week Check List.

On Monday, April 20, 2020, LEINWC director Renee Fultz will do a virtual program available on Facebook at 3:30 that will be available to watch anytime after.

Anytime during Earth Week April 19-25, 2020, send a selfie or photo of yourself working to improve our island nature preserves to leiconservancy@gmail.com or text to 419-366-2087 to Lisa Brohl. We ask in particular that you pull the invasive garlic mustard from any of our preserves including the Cooper’s Woods Preserve or at the Lake Erie Islands Nature and Wildlife Center. Send a photo of you with a garbage bag of the mustard. For instructions on how to pull and what it looks like, contact Lisa Brohl at the e-mail/phone above. WE will also have instructions on our website and Facebook as well.

You may also take a selfie of yourself removing garbage from our preserves or anywhere on the islands. For proof, take and send again of your bag of garbage. Come enjoy the native wildflowers and help keep our woods community healthy. Walk our shorelines and pick up the litter at the same time.

What a great way to still honor Earth Week! And have something to do during this quarantine! Questions, let us know!

Earth Week Checklist

April 20-24



Have a parent initial this list and send picture of completed checklist to leinwc@gmail.com, prizes will be distributed at a later date.

****Eligible for Panther Pride Hours!****

_____ Recycling Event Monday at 3:30 pm Live on LEINWC Facebook

_____ Ride Bicycle or take a walk

_____ Pull 1 bag of Garlic Mustard, send picture to leiconservancy@gmail.com or Lisa Brohl at 419-366-2087

_____ Pick up 1 bag of garbage, send picture to leiconservancy@gmail.com or Lisa Brohl at 419-366-2087

_____ Pre-order from LEIC Native Plant Sale (optional)



December Bird Banding *By Lisa Brohl*

Tom and Paula Bartlett visited the island in December to band birds and owls. They set up in Lisa and Russ Brohl's yard during the day and at the LEINWC and at the Barnhill's property during the evening. They were able

to band eastern screech owl at the Barnhill's and lucky to band the first tufted titmouse on the island at Brohl's. Teddi Keith Morris, Nancy Welter, Ken Farber, and Mark Nemec all came to help.



Photos: Clockwise—Bob Russell and Nancy Domer visiting the banding station at Barnhill's; Nancy Welter and Tom Bartlett with the tufted titmouse; Ken Farber releasing a bird; Golden-crowned kinglet; Brown creeper



OHIO BIRD
CONSERVATION
INITIATIVE

7 Things You Can do For Bird Conservation *(program by Matthew Shumar of the [Ohio Bird Conservation Initiative](#))*

1. Make windows safe for birds-use tape or film on windows to minimize reflectiveness.
2. Keep your Cat indoors—they will be happier and have less stress. If your cat is miserable inside, that says more about you.
3. Get rid of manicured, chemical laced lawns. Plant native plants
4. Avoid pesticides when you can.
5. Drink shade grown coffee
6. Reduce use of plastic
7. Participate in Citizen Science-E-bird, Audubon Christmas Counts, Cornell Feeder Counts, Hummingbird at Home, Global Big Day, Climate Watch

You can also find several educational Webinars on the site (by clicking Resources> Webinars on OBCI's home page) including this special one about Bird Banding by none other than **Tom Bartlett!**

https://www.youtube.com/watch?v=vcNMOSo_Kik

Bass Islands Bird Banding Wish List

Maybe you can't make it out to the islands on the bird banding dates but you still want to help. Here's how! Please don't feel like you need to buy the entire count needed for each item. Whatever you can do will help! Do let us know if you can help out with any of these items at leiconservancy@gmail.com or 419-366-2087.

- 12 - poles sets with rebar (@ \$40/\$200) (\$18 per set of 2/ \$108)
- 10 - yearly sign laminations (@ \$5/\$60)
- 5 - owl nets (@ \$120/\$600)
- 2 - 9M X 30 mm songbird mist nets (@ \$130/\$260)
- 60 - AA batteries
- 60 - AAA batteries
- 5 - printings of yearly report

Freshwater Sensations

Christine Ontko
Bed and Breakfast
PO Box 307
419-366-1036
www.freshwatersensations.com



Welcome to The Boardwalk!

341 Bayview Ave
Put-in-Bay, OH 43456
419-285-3695

www.OhioVacationLand.com
440-315-6000



Lee Hisey
Lake Erie Islands

Bass Islands Christmas Bird Count *By Lisa Brohl*

The Lake Erie Islands Count Circle of the Christmas Bird Count was held on December 15, 2019. It was a relatively warm day with open water around the islands this year which made for a very different count. Duck hunters were present offshore on both South Bass and Middle Bass which affected the count. Not as many birds were present at island feeders with the warmer weather this year.

Here on South Bass Island, we counted 6,388 birds from dawn to dusk, hearing eastern screech owls before dawn. The most numerous birds were waterfowl-with 2,179 red-breasted mergansers that were flying east across South Bass as the sun came up and continued to move as the day went on. Large rafts of scaup were seen offshore. Paul Ladd had tundra swans fly over his home. The most interesting bird of the day was the eastern phoebe that we found in Bob Russell's yard at east point-Susan Harrington got some photos. This bird survives on insects which are in scarce supply this time of year. Susan Harrington, Lisa Brohl, Karen Wilhelm and Elizabeth Heineman drove and walked around the island to tally waterfowl and land birds. Russ Brohl, Kit Knaser, Susan Harrington, John Ladd, Ruth Scarpelli, Michelle Heineman, Sarah Toole, Pam Stephens, Jean Hilt, Gener Zajac, Maryann McCann, Randi Wertenbach, Bob Glauser, Paul Ladd and Gay Pippert, Richard Gump, Barb Chrysler, and Carmen Trisler each watched their feeders and yards for a few hours that day to records the birds and woodpeckers who came to visit.

On Middle Bass, Nancy Welter and Teddi Keith-Morris walked and drove the forests and shores of the island to tally a total of 1,398 birds with the most numerous birds being American robins at 254 followed by 223 lesser scaup. The highlight of the day was a great horned owl at the Bass Club and cedar waxwings bathing in a puddle.

Paul Ladd, Lisa and Russ Brohl visited Green Island on December 13 as part of the Christmas Bird Count. 45 birds were counted including a great horned owl and three kinds of woodpeckers-dorsey, red-bellied, and northern flicker. A permit was received from the Ohio Division of Wildlife for the visit-thanks to Paul Ladd for running Lisa and Russ over in his outboard on a perfect, calm day.

Counters were also busy at Kelleys Island. Tom and Paula Bartlett, Alexi Panehal, Tyler McClain surveyed the island while Shelly Stein and Leslie Korenko watched their feeders. Surprises there were sandhill cranes that flew overhead as well as a Pacific loon that showed up the day after the count. At Pelee Island, Rob Tymstra, Paul Carter, Lori Clancy, Sumiko Onishi, Graeme Gibson, Barbara Koch-Donga, Brian Kipp, Lisa Kipp, Bernie Van Donk, Margaret Van Donk, Deb Billard, Fred Billard, Ron Tiessen, Lynn Tiessen watched and recorded 52 species that day.

The total for all the islands included 73 species. Final results and individual species counts are included in this attached table. Thanks to all who participated in this important citizen science event!



Photos: Paul Ladd in boat on way to Green Island; Paul Ladd and Lisa Brohl at Green Island; Karen Wilhelm, Susan Harrington, and Elizabeth Heineman at the Massie Cliffside Preserve

Species	Kelleys	SB	MB	PI	Total
Canada Goose	117	377	94	65	653
Tundra Swan		19		2	21
Mute swan				2	2
Wood duck				1	1
Gadwall				2	2
American Black Duck	7	2		1	10
Mallard	185	107	28	5	325
Mallard x American Black Duck	1				1
Canvasback		1			1
Redhead		2			2
Greater Scaup	2	6		4	12
Lesser Scaup	4	1	223		228
Scaup spp.		2000		1100	3100
Bufflehead	469	107	26	194	796
Common Goldeneye	197	4	59	166	426
Hooded Merganser	1				1
Common Merganser	1				1
Red-breasted Merganser	466	2179	152	205	3002
Merganser spp.		326			326
Diving duck spp.		188			268
Duck spp.			80		80
Ring-necked Pheasant				6	6
Wild Turkey				127	127
Common loon	2				2
Pacific loon	CW				CW
Horned Grebe	11	1	7	3	22
Great Blue heron	2				2
Turkey Vulture	4			2	6
Bald Eagle	4	3	2	6	15
Sharp-shinned Hawk	1	1			2
Cooper's Hawk	5	3		2	10
Red-tailed Hawk	3	5		4	12
Hawk spp.		1			1
Sandhill Crane				12	12
Bonaparte's Gull				3	3
Ring-billed Gull	40			20	60
Herring Gull	214	141	34	46	435
Great Black-backed Gull	3	1			4
Great black-back x herring	CW				CW
Gull spp.		39	25	64	128
Mourning Dove		2		36	38
Eastern Screech-Owl	8	1			9
Great Horned Owl	2	3	1	8	14
Belted Kingfisher	2				2
Red-bellied Woodpecker	8	15	2	3	28
Yellow-bellied Sapsucker	3				3
Downy Woodpecker	35	33	6	8	82
Northern Flicker	32	7	2	10	51
American kestrel				1	1
Eastern Phoebe		1			1
Blue Jay	6	19	1	6	32
American Crow	42	23	14		79
Horned Lark				10	10
Black-capped Chickadee	210	89	25	12	336
Tufted Titmouse		CW			CW
Red-breasted Nuthatch			1	2	3
White-breasted Nuthatch		33	7	11	51
Brown Creeper	4	1		1	6
Winter Wren				2	2
Carolina Wren	14	5	2	10	31
Ruby-crowned Kinglet	1				1
Golden-crowned Kinglet	8			8	16
Kinglet spp.		5			5
Eastern Bluebird	9			7	16
Hermit Thrush	30				30
American Robin	648	75	254	4	981
European Starling	500	3	107	97	707
American Pipit	5				5
Cedar Waxwing	272		5	15	292
House Sparrow	172	302	93	187	754
House Finch	162	79	72	66	379
Purple Finch	7				7
American Goldfinch	9	53	39	8	109
American Tree Sparrow	8			15	23
Field Sparrow				2	2
Fox Sparrow	1				1
Song Sparrow	1	5	5	10	21
White-throated Sparrow	83			20	103
White-crowned Sparrow	1				1
Dark-eyed Junco	82	33	8	12	135
Sparrow spp.		2			2
Yellow-rumped warbler	19				19
Red-winged Blackbird				2	2
Common Grackle	CW				CW
Brown-headed Cowbird				15	15
Northern Cardinal	206	85	15	21	327
Totals	4329	6388	1469	2651	14837
73 spp					
2 hybrids					
3 count week					
8 species					

Lake Erie Islands Conservancy Christmas Potluck *By Lisa Brohl*



The Lake Erie Islands Conservancy held their annual Christmas potluck at the South Bass Island Lighthouse on December 10, 2019. It was a blustery evening as usual at the point but delicious foods were brought and enjoyed by all. A toast was made to the many land protection successes over the past year by Conservancy Chair Lisa Brohl and Put-in-Bay Township Park District Chair Kelly Faris. Thanks to our hosts the Ohio State University Stone Laboratory for the use of the Lighthouse.

Lisa and Russ Brohl, Marty and Kelly Faris, Bob and Dianne Smith, John and Paula Ladd, Sue Seaberg, Karen Burris, Julene Market, Susan and Mike Byrnes, Pinky Batt, Tom Thanasu, Valerie Chornyak, Dustin Heineman, Kristin Stanford, Doraine Thoms, Jill and Steve Cooks, Marsha Parker, Jeff Koehler, Jackie and Glenn Cooper, Renee Fultz, Linda Parker attended.

Photos: Clockwise—Kelly Faris and Kristin Stanford enjoying the potluck food; Tom Thanasiu showing his Christmas colors; Sue Seaburg, Kelly and Marty Faris, Paula Ladd, Marsha Parker, John Ladd, Dianne and Bob Smith; View from South Bass Island Lighthouse



T-Shirts Featuring LEIC!

Any season is a great time to pick up an LEIC t-shirt! Here are new t-shirts in kids sizes and a new look for our adult tees. Still made in the USA of organic materials at LakeScreen Printing in Lorain, Ohio. Contact Lisa at 419-366-2087 or leiconservancy@gmail.com if you would like to purchase one.

AND/OR

An annual LEIC membership gives someone our quarterly newsletter and info on our programs. A donation to our Land Protection Fund in someone's name is a great gift that keeps on giving with the purchase of new preserves for us all to enjoy!

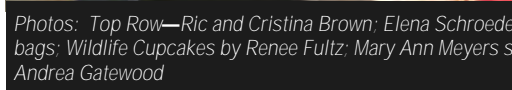


1 "Your Bank of a Lifetime"
419-285-7340 fnblifetime.com
Bellevue - Catawba - Clyde - Fremont
Port Clinton - Put-in-Bay - Sandusky
First National Bank Established 1875
Proud supporter of the Lake Erie Islands Conservancy

419-285-2608
MIDDLE BASS GENERAL STORE
MIDDLE BASS ISLAND
New Pizza Shop and Bar
Come Visit us .. It is worth the trip

NEWS
INFORMATION
PHOTOS
www.putinbaydaily.com

Holiday Bazaar Wonderful Success! *By Lisa Brohl*



Thanks to everyone who made artwork, manned a table, baked cookies, or shopped to make our Holiday Bazaar a success! We really appreciate Sarah Cochran and Susan Byrnes hard work in making it happen again. The Lake Erie Islands Conservancy and Lake Erie Islands Nature and Wildlife Center appreciate the table rent and support of all those who shopped at our tables too!

Special thanks to artists and table renters-Jess Dress, Sue Thwaite, Nate and Sue Seaburg, John Baker, Christy Ontko, Sarah Cochran, Jessie Greene, Jill Cooks, Kelly Faris, Heather Durdil, Kerry Burris, Mary Ann Meyers, Kelly Mohn, Ric and Cristina Brown, Sandi Glauser, Brian Hovey, Tracy Burgess Sayeh, S. Spangler, Russell II and Lisa Brohl.



Photos: Top Row—Ric and Cristina Brown; Elena Schroeder manning table Middle Row—Kristin Stanford and Renee Fultz at LEINWC table; Elizabeth Heineman models LEINWC bags; Wildlife Cupcakes by Renee Fultz; Mary Ann Meyers selling Mary Kay Bottom Row—Bazaar Shoppers; Juliana and Kate Scarpelli at the LEINWC table; Jessie Greene and Andrea Gatewood

LEIC and PIBTPD Wish List

2020 brings a lot of excitement to the preserves as we celebrate our 20th Anniversary! There are a multitude of ways to get involved this Spring! Do let us know if you can help out with any of these items at leiconservancy@gmail.com or 419-366-2087. Or you may have skills you wish to contribute—please call!

- New members! Check us out at www.lakeerieislandsconservancy.org!
- Larger Office Space, Assistance sorting, organizing office.
- Volunteers Always Needed—spread mulch on trails, remove downed trees, and pick up litter—garlic mustard pulling, amur honeysuckle removal-all preserves.
- Website and Social Media Assistance
- Adobe, Access, and Arc GIS Programs or volunteers with these skills.
- Recycled Copying Paper, Ink for Printers (Brother LC 61, HP 970XL, HP 971XI-must not be generic)
- Medium Size Cat or Dog Carrier
- Golf Cart for Summer Transport of tools, personnel.
- Assistance with trail layout, construction, parking, mulching and signage with extension of the trail or boardwalk at the Middle Bass Island Forested Wetland Preserve and the Lawrence Evans Preserve.

Conservancy Giving Tuesday Thanks!

The Lake Erie Islands Conservancy wishes to thank the following for their donations on Giving Tuesday, December 3, 2019—Bruce Miles, Susan Byrnes, Patricia Thwaite, Paula Ziebarth, Krissy Hart, Joe and Michelle Pennington, Kalen Cap and Jamie Berger.

Participation in Giving Tuesday allowed us to enter a drawing for \$5,000 with the Toledo Community Foundation. We really appreciate all the support we receive from this community!

#GIVINGTUESDAYNWO



The Dodge House

Put-in-Bay's Largest Waterfront Rental
Sleeps up to 20 people ~ 419-341-9760
www.DodgeHousePIB.com



Preserve News *By Lisa Brohl*

Richard Gump and crew installed new split rail fencing at the Massie Cliffside Preserve and Scheeff East Point Preserve late this fall. They will be installing some along the boundary at the Dodge Woods Preserve in spring.



Preserve LEIC Receives Donation from “Cans for Conservation”

In 2018, Columbus resident and retired ODNR employee Bob Fletcher decided to start a beneficent effort he named “Cans for Conservation”. He began collecting aluminum cans from friends, neighbors and other willing sources and recycled them for cash. At the end of the year, he solicited nominations and votes from can contributors for conservation organizations they’d like to see receive the donation. Arc of Appalachia, a southern Ohio land protection non-profit group based in Bainbridge, won the \$150 that was collected in 2018. In 2019, Bob’s efforts included more contributing sources, although the value of aluminum unfortunately dropped. Still, he collected \$250 from his recycling efforts. Once again, Arc of Appalachia got the most votes, but won by only one vote over the Lake Erie Islands Conservancy which had been



nominated by LEIC member Debbie Woischke. Bob decided that since the vote was so close, the money would be split with Arc of Appalachia receiving \$150 and LEIC receiving \$100. Thank you very much, Bob! Your efforts produce a win-win situation by ensuring that cans are getting recycled, and that a worthy organization – or two! – receives the funds. LEIC sincerely appreciates your donation!

Visitors to our Preserves *By Lisa Brohl*



Photo: Dr. Geoffrey Buckley, Dr. Geoffrey Debelko, Kristin Parrish, Dr. Dorothy Sack and Lisa Brohl

As part of her project for the Put-in-Bay Township Park District, Ohio University graduate student Kristin Parrish placed visitor logs at each preserve to record number of visitors, hometown of each visitor as well as how they found out about the preserves. Our last newsletter reported on how many visitors signed the guestbook and that our preserves are mostly found by chance. Volunteer Zoe Zura took the data sheets prepared by


Kristin and determined our preserve visitors in 2019 came from 41 different states and fourteen foreign countries although the majority were from Ohio. Kristin Parrish defended her project to her committee and graduated from Ohio University with her masters in December. Lisa Brohl, CEO of the Park District, attended her defense as part of her committee. Congratulations Kristin and Thank you!

Nobody Knows Island
Real Estate Like We Do
Call Corky 419-341-4478

2017
RESIDENTIAL
SALES CLUB



*Become an LEIC
Member for
just \$25 for an
entire year!*
*Please see page 23
for details.*

Put-In-Bay Electric
766 Duff Road  P.O. Box 567
Put-In-Bay, Ohio 43456
419-285-6120

Spring! What a wonderful word! **Watch for updates on below—see pg. 24 for details!

Watch for These Spring Blooms!



Photos: Watch for these spring blossoms in the Preserves—sharp-lobe hepatica, white trout-lily, cut-leaf toothwort, and bloodroot

Plant a Tree to Celebrate Arbor Day Friday, April 24 By Kelly Faris



Once again, Put-in-Bay, Ohio, has been named a Tree City USA by the Arbor Day Foundation in honor of its commitment to the goals and principles of the Arbor Day Foundation.

Put-in-Bay achieved Tree City USA recognition by meeting the program's four requirements: a tree board, a tree-care ordinance, an annual community forestry budget, and an Arbor Day observance and proclamation. This year there will be no public program to honor Arbor Day due to the Covid-19 pandemic. According to National Arbor Day Foundation Recommendations, an Arbor Day celebration is not a requirement to be a Tree City USA for this year due to Covid-19.

The Council of the Village of Put-in-Bay has allocated funds for Arbor Day expenses. At a later date, a spicebush (*Lindera benzoin*) and a ninebark (*Physocarpus opulifolius*) shrub will be planted privately at the village Arbor Day site adjacent to the Put-in-Bay Post Office and the village housing. Ninebark is a small tree or shrub native to the islands and can be found on the cliffs here. It is a member of the rose

family with exfoliating bark and attractive blooms in the spring followed by persistent seed pods in fall. It is a favorite with native bees. Spicebush is native to Ohio and has aromatic twigs, small greenish-yellow flowers in early spring, and attractive red fruits in fall. Birds and pollinators like spicebush. We will also plant an American Sycamore (*Platanus occidentalis*) at the Village Bathing Beach to replace the previously planted thornless honey locust tree lost in the high water. Sycamore is a great choice as it is found naturally in moist areas and along the shore of the islands. Its three colored bark makes it a distinctive large tree for shade.

The Arbor Day Foundation is a million member nonprofit conservation and education organization whose mission is to inspire people to plant, nurture, and celebrate trees. Information is available at arborday.org.

Members of the Village of Put-in-Bay Tree Commission are Lisa Brohl, Kelly Faris, and Kendra Koehler.

Although there will be no public celebration this year, you can still celebrate Arbor Day at home by planting a tree in your own yard!

Back To The Wild May 6!

Back To The Wild, a Wildlife Rehabilitation Clinic in Castalia, Ohio, will visit Put-in-Bay, on Wednesday, May 6, 2020. They will bring their birds and critters for a show at 3:15 at the Put-in-Bay Town Hall. Don't miss it!!!! The visit is sponsored by the Put-in-Bay

Recreation Committee, the Lake Erie Islands Nature and Wildlife Center, the Lake Erie Islands Conservancy, and the Miller Boat Line.

Island Wide Garage Sale May 16!

John and Paula Ladd have again offered their yard at the corner of Lorain and Catawba Island for the Conservancy to take part in the Island Wide Garage Sale on May 16. A big thanks John and Paula!

If you have items you would like to donate to sell to benefit the Conservancy, bring them to the Ladd's the morning of the 16th. Or come on out just to shop on May 16 at the Ladd's. The Conservancy will have native plants and t-shirts that day as well.

Island Green Week Coming August 1-8, 2020!

Events are being planned for Island Green Week August 1-8 and watch the www.lakeerieislandswildlife.com for the details for this summer. Kickoff will be the Middle Bass Poker Kayak Day and the week will include walks, an ecotour, artisan fair, pig roast, and much

more! Make plans for a visit and come experience the Islands with your family! Schedule of events is currently on our Conservancy website at www.lakeerieislandsconsevancy.com as well.

LEIC 20th Anniversary Planning!

It has been quite a 20 year journey of land preservation on the Lake Erie Islands. With the Put-in-Bay Township Park District there are now 91.8 acres preserved-and with the closing of Coopers woods we will be over 100 acres preserved. We will be holding a special annual

meeting this fall to celebrate. If you would like to help put this party together, contact us at leiconservancy@gmail.com or 419-366-2087. See below for just a few of the reasons we work so hard at conservation!

Put-in-Bay, Ohio
Celebrate Island Style
PUT-IN-BAY CHAMBER
419-285-2832 • VISITPUTINBAY.COM

Heineman's
OHIO'S OLDEST FAMILY OWNED AND OPERATED WINERY SINCE 1869
Visit the Winery, get a snack and try a few wines at the Wine Garden, tour Crystal Cave, or even do all three. We promise you'll have fun!
www.heinemanswinery.com

Miller
BOAT LINE
Ferries to Put-in-Bay & Middle Bass Island
800-500-2421
MillerFerry.com

A Special THANKS...



Susan Ferguson made several trips to remove bags of garbage. She is shown here with Taylor Marie Campbell who helped as well.



Zoe Zura removed a pile of old garbage from near the caves in Coopers Woods.



Thanks Kate (shown) and Joe Byrnes, Doug Steidl and Jacob King for picking up garbage at Scheeff East Point Preserve! The high Lake Erie levels brings us lots of plastic debris.



LEIC member Casey Carty built this great rocket bat house for our Middle Bass Island East Point Preserve. What a well researched and beautiful job on this winter's project! Sure the bats will love it.

Zoe also spent some time helping Lisa Brohl at the LEIC office this winter-Copying, filing, and tallying visitor data from the preserves.



Marty and Kelly Faris folded, labeled, and stamped the Winter newsletters.

Linda Parker (shown) and Linda Mahoney also made a trip to Cooper's Woods to remove these bags of trash.



Tom Thanasu, Jessie Greene, and Susan Ferguson all pitched in and picked up dog poo at the Scheeff East Point Preserve. Please remember that if you walk your dog in the preserve, it must be on a leash and please pick up after your pet! We have a container of doggie bags for use and a garbage container on site.



Many residents pitched in to help when The Conservation Fund asked us to see that garbage found in proximity of the caves in Coopers Woods would need to be removed before closing.

The Put-in-Bay High School Environmental Club with advisor Missi Kowalski removed several bags from one of the caves. — Missi returned and brought her sons Cody and Caleb Kowalski who removed more garbage.

Julene Market brought out a bag of garbage from Coopers also.



Susan Ferguson also has removed large plastic pieces that have been washed up on the beach of Scheeff East Point Preserve with the high water.—Lisa Brohl helped Susan Ferguson remove the plastic refuse.



Catawba Avenue

Erie Island Carts.com

At the Airport ~ Overnight rentals
and Reservations welcome

419-285- KART



Yardworks

PO Box 538

Dan and Valerie Kowalski Put-In-Bay, Oh 43456
Owners (419-) 285-2147

New and Renewing Members

Friends

Jan Anteau
Phoebe Borman
Judith Bransome
Tracy Burgess
Karen Burris
David Butz
Jean Cabral
Kalen Cap
Carol and Joe Cerny
Bob Cummings
Karen and Mike Cummings
John S. Doller
Judy DuShane
Martha Dykes
Joan French
Krissy Hart
Amy and Peter Huston
Edwin Isaly
Lois and Bill Jellison
Dr. Andrew W. Jones
Susan Latham
Tim and Jeanette Luecke
Mike McCabe
Olive O'Rourke Scherf
Anne Parker
Linda Parker
Charles Pearson
Kate Pilacky
Barbara and Donald Prahst
Sue Seaburg
John Schrenk
Marsha Schulz
Gerald Shanley
Pam Stephens
Diane Szabo
Shelley Szymko
Al and Christine Tielke
Sarah Toole
Nancy Welter
Paula Ziebarth

Supporters

Cheryl and Tony D'Amico
Paula M. and H. Thomas Bartlett
Kevin Becker
Joan Booker
Tom and Diane Brennan
Pat Dailey
Teddi Keith-Morris
Joan Kempf
Kathryn V. Knaser
Katherine Ladd
Dave and Tina M. Larson
Angie Martens

Mary Ann Meyers
Lauren Mooney
Mike Motycka
Deborah Parker
David and Bonnie Petro
Fran and Gary Poe
Marge Pristas
Todd and Marie Rader
Johnny and Rose Reising
John F. Shelley
Linda and Joe Shull
Loretta Smith
William A. Sulesky
Janice Williams
Debra K. Woischke

Contributors

Ray and Pati Arth
Leah Bilski
Lisa Bircher
Todd and Jennifer Blumensaadt
Sara Booker Sheehan
Drs. Earl and Thurid Campbell
Steve and Jill Cooks
Sally M. and James C. Duffy
Darren Dunning
Galen and Marina Guenther
Dustin Heineman
Neal and Karla Hess
James Jagger Juknialis
Bob Krause
Peggy Leopold
Joseph Link
Thomas Marsh
Lester Nichols
Dave and Barb Nostrant
Joe & Michelle Pennington
Bob Russell
Linda and Mark Seeman
Ken and Ann Shelton
Bill and Penny Spanfellner
Robert "Sky" Sylak
Nick and Kathy Tagliaferri
Ed Tancock
Zoe and Brad Titchener

Stewards

Professor and Mrs. John Titchener

Patrons

Helen Brohl



Life Members

John Baker
Marv and Pat Booker
Jon D. Brausch
Jim and Betsy Brohl
Russ & Lisa Brohl
Linda and Dave Bugoci
Valerie Chornyak
Alan & Stacey Clink
Gary and Carol Coates
Frederick Fether
Christian L. Geiss
Richard Gump
Scott Jackson

Judy and Joseph Janicki
John & Paula Ladd
Georgia MacVean
Julene Market
Elaine and Howard Martens
Mary Ann McCann
Valerie Mettler
Greg Millat
Mark Nemece
Roger & Mary Parker
Mary Ann and Rich Plewacki
Hank & Gayle Polcyn
Carol Richardson

Richard and Carol Roberts
Fritz and Pam Rudolph
Fund of the Toledo Community Foundation
Mary L. Staley
Kristin Stanford
Matt Thomas

New Life Members
David and Jacquelyn Clark
Ken and Jennifer Farber
Karen A. Jennings
Zoe and Brad Titchener

Friend Membership with Newsletter Ad

Arbor Inn-Susan and Mike Byrnes
Bolte Real Estate-Corky and Jerry Flint
Duff's Workshop-Duff and Katrina Spatafore
Erie Islands Carts-Sharon Gray
First National Bank-Laura Schlacter
Heineman Winery-Edward and Dustin Heineman
Howard Hannah-Lee Hisey
Jet Express
Lake Erie Islands Historical Society-Resale Shop
Miller Boat Line
Middle Bass General Store
Northern Exposure
Penny Plus Store-Mark Nemece
Put-in-Bay Electric-Scott and Kim Pugh
R. Gump Builders-Richard Gump
The Boardwalk
The Candy Bar-Linda Mahoney
The Dodge House
The Goat Tavern-Scott and Caroline Jackson
Yardworks-Valerie and Dan Kowalski

General Fund

Joe and Suzanne Kozura

Grants

David and Jacquelyn Clark Charitable Fund

Land Protection Fund

Judith Bransome
Cans for Conservation-Robert Fletcher Chair
James Jagger Juknialis
Bob Krause
Joseph Link
Lauren Mooney
Lester Nichols
Dave and Nostrant
Kate Pilacky
Marge Pristas
Bob Reynolds
Nick and Kathy Tagliaferri
Janice Williams
Debbie Woischke-Christmas present to Lisa and Russ Brohl

Giving Tuesday

Donations

Cheryl Beal
Jamie Berger
Susan Byrnes
Kristine Hart
Kalen Cap
Bruce Miles
Joe and Michelle Pennington
Pat Thwaite
Paula Ziebarth

Donations

Cheryl Beal-Matching
Employer Contribution-OneDigital Insurance LLC

Kalen Cap through the Benevity Community Impact Fund- Macy's Michael Durinsky III, Monthly First Energy Employee Contributions
Jennifer Miller through United Way of Greater Toledo
Mary Pugh for Lisa Brohl's birthday
Scott Sneller, Bruce Miles, Pat Thwaite-donations with bird seed sale
Vanguard Charitable-The C. Joseph Arbogast Charitable Fund-in memory of Joe

AmeriCorps Intern Donations

Helen Brohl
John and Paula Ladd



Don't forget!
Become an annual sponsor of our newsletter for

\$100. Place an ad in our newsletter and receive an annual Friend Membership FREE!
Call 419-366-2087

THANK YOU!

LEIC Membership Form

Membership Notices are sent out annually-
this is for new memberships-share with your friends

___\$25 Friend ___\$50 Supporter ___\$100 Contributor

___\$100 Friend/AD ___\$250 Steward ___\$500 Patron



___\$1000 Life

Name _____

Spouse/Companion _____

Island Address PO Box _____ Put-In-Bay, Ohio 43456

E-mail _____

Permanent Address _____

City _____ State _____ Zip _____

Phone # _____ Cell # _____

Island # _____

In addition to my membership, I would like to donate to:

Land Protection Fund

I would like to contribute \$ _____ to the Lake Erie Islands Conservancy, to be used only for expenses related to the purchase of land.

I understand that I will receive a *Certificate of Donation* for income tax purposes.

Stewardship Fund

I would like to donate \$ _____ to the Stewardship Fund to help maintain those properties owned by the Lake Erie Islands Conservancy.

Please make checks payable to (LEIC) Lake Erie Islands Conservancy

Please Send to: PO Box 461, Put-in-Bay, Ohio 43456

All donations are tax deductible.

Thank You!



Looking for a Fun Summer Outdoor Job?

The Lake Erie Islands Conservancy, Put-in-Bay Township Park District (PIBTPD), and the Lake Erie Islands Nature and

Wildlife Center (LEINWC) are looking to hire an AmeriCorps Environmental Steward Intern for the summer of 2020. It is a ten week program working a minimum of 30 hrs. per week. Interns are provided a small stipend biweekly and a Segal Educational Award at the completion of the internship-to be used for qualified student loans or tuition. The intern will work on projects like trail maintenance, invasive plant management, grant writing, design of signs and brochures, social media, wildlife and plant surveys, nest box monitoring, etc. for the Conservancy and the PIBTPD depending on the skill set of the intern. For the LEINWC, the intern can assist with tours, Wild Tuesday, Nature Camp, native wildlife and our pollinator exhibits, community events and outreach, and monitoring the phenology garden and pollinator gardens.

Position planned for a June start. Applicants must be at least 17 years old. Preference is given to university students but a high school education is all that is required to use the education award. It is necessary to have island housing. If interested, contact Lisa Brohl at leiconservancy@gmail.com or 419-366-2087. To take a look at the Environmental Steward program, go to their website at www.environmentalstewards.org.

Link to Position/Application posting: <https://sccorps-openhire.silkroad.com/epostings/index.cfm?fuseaction=app.jobinfo&jobid=2091>

AmeriCorps Intern for the Islands— Please Donate

By Lisa Brohl

The Lake Erie Islands Conservancy, Put-in-Bay Township Park District, and Lake Erie Islands Nature and Wildlife Center will be sharing an AmeriCorps intern for the summer to assist with our land preservation and educational programs. We have had great experiences with our interns providing new energy and ideas to our programs in the summer when we are all the busiest. We are looking for donations toward this expense.

If you are interested in donating, contact Lisa Brohl at 419-366-2087, leiconservancy@gmail.com, or sending a check to LEIC, P.O. Box 461, Put-in-Bay, Ohio 43456 with AmeriCorps on the memo line. You may also use our PayPal at www.lakeerieislandsconservancy.org but designate for the AmeriCorps intern program. If we are unable to get an intern that has island housing already, we would welcome housing for a ten week intern as well. We have had wonderful interns- Colleen O'Brien, Leah Bilski, Carmen Levand, Jackie Taylor, Chloe Nostrant, Jenna Prahst, Samantha Newhouse, and Emma Young—each brought their special talents to their summer work experience. We wish to thank John and Paula Ladd and Helen Brohl for their generous donations to this fund so far.



The Put-in-Bay
Gazette
Ohio's Oldest Island Newspaper
(419) 285-3645

Shop the Resale
Downtown Put-in-Bay
Behind LEIHS Museum
419-341-2725

Jet Express
Excursion Adventures
Cruising Lake Erie & Beyond
Visit jet-express.com for more details

PO Box 461
Put-In-Bay, Ohio 43456
Phone: 419-366-2087
E-Mail: leiconservancy@gmail.com

PLACE
STAMP
HERE

We're on the Web!
www.lakeerieislandsconservancy.org

Save paper-time-and money!
Have your newsletter emailed to you!
Email: jd4mb2011@gmail.com

Board of Directors

Chairperson

Lisa Brohl

Secretary/Treasurer

Kelly Faris

Board Members

Susan Byrnes - Marsha Collett

Ken Farber - Dustin Heineman

John Ladd - Peggy Leopold

Bruce Miles

Linda Shull - Kristin Stanford

Nancy Welter - Paula Ziebarth

Dave Bugoci

Advisory Council

Carol Richardson - Richard Gump

John Dodge - Julene Market - Bob Russell

Newsletter Editors

Lisa Brohl

Michelle Pennington

Stay active and get some much needed fresh air with LEIC events—keep checking our website and Facebook pages for more info!



July 18, 2020 for Middle Bass Music Festival 2020

August 1-8, 2020 for Island Green Week



*Lake Erie Islands
Conservancy*



A HUGE Thanks to Bostwick-Braun for printing assistance!!



Important Announcement

****All LEIC associated Events scheduled for the coming months could potentially be cancelled due to the current COVID-19 global pandemic. Please watch Facebook or the LEIC Website (<https://lakeerieislandsconservancy.org/>) for updates.**

Please Note: While we are hoping you and your family are taking appropriate measures to stay safe as we all navigate this challenging time, please remember that the Island Preserves (<https://lakeerieislandsconservancy.org/maps-of-the-lake-erie-islands/>) are all open and a wonderful place for you to get out and get some fresh air and exercise with your family. *(Please remember: If you're taking your pets with you, make sure to follow posted rules—on leash, use provided doggie bags, etc.)*

Please maintain a recommended distance of 6 feet from other preserve visitors while on the trails and do not congregate as a group in the parking areas. Also, please refrain from touching benches or brochure boxes with your hands unless using sanitizer.

If you would like to support our conservation efforts, click [here](#) or go to our website shown above and look for the Donate Button.