

ISLAND

Lake Erie Islands
Conservancy
Presents

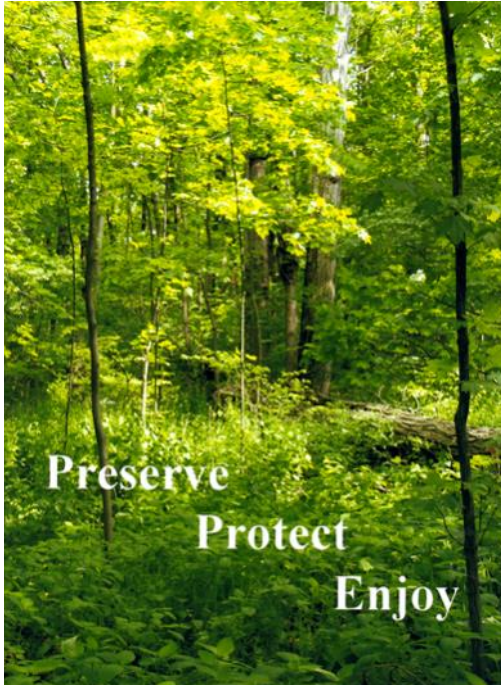


GREEN SCENE

Lake Erie Islands Conservancy Quarterly Newsletter

Winter 2020

The Legacy of Land Preservation *By Lisa Brohl*



Preserve
Protect
Enjoy

Photo: Cooper's Woods Preserve - Photo and Graphic by Kelly Faris

For Lake Erie Islands Conservancy, hindsight is truly 2020. The year 2020 commemorates 20 years as an organization. Over 100 acres of forests, wetlands, and shores have been preserved since we began in 2000, culminating with the dedication of Cooper's Woods Preserve early this fall. We are so grateful to all who have supported us over the years through volunteering, donations, and so much more.

As we enter the new year and our next chapter, we will need to continue to preserve special places as well as to properly steward those we have protected—working with our partners, the Put-in-Bay Township Park District, to make sure that invasive plant species are removed, trails are built, and any signage is designed thoughtfully and properly placed.

We will need to shift into our next 20 years with new ideas for volunteer management, membership growth and involvement, and a strong commitment to preserving our legacy for the future. As you read the quarterly newsletters and enjoy walking the preserves, please join us as we dream for the future of our islands as well.

Our Mission:

To encourage conservation and Protection of Natural and Agricultural Lands in the Lake Erie Islands for the Benefit of Future Generations.



FUTURE GENERATIONS

Speaking of Future Generations.... Here are Lyla Steidl and Elora Hubner making piles of the invasive amur honeysuckle at the Benjamin Woods Preserve this fall. More on pg. 20!

In This Issue:

Cooper's Woods Dedication	2
Cleveland/Manderbach Dedication	3
LEIC Gear	7
Wish List	8
Fall Bird Banding Report	9
Managing Bat Habitat	13
Blue Frog of Middle Bass	14
Volunteers	21

Upcoming Events:

Christmas Bird Count	20
Save the Dates	24

Benjamin Woods *By Lisa Brohl*

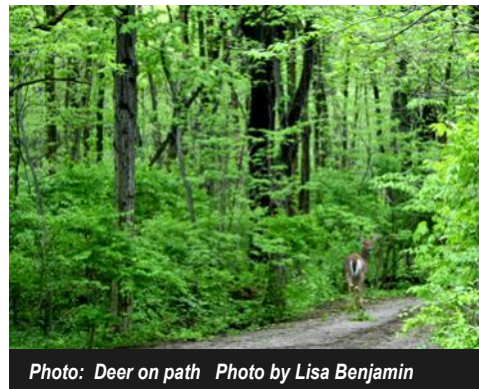


Photo: Deer on path Photo by Lisa Benjamin

On September 29, 2020, Put-in-Bay Township Park District acquired 2.53 acres of wooded land from the Kenneth and Katherine Benjamin Family. The parcel will be called the "Benjamin Woods Preserve." The preserve has an entrance and parking area off Langram Road, and the parcel abuts the east perimeter of Cooper's Woods. A trail will eventually be developed

from the Benjamin Woods Preserve to the Cooper's Woods Preserve.

The Benjamin Woods is being acquired, in part, by funding and technical assistance made available as a voluntary mitigation process for habitat impacts that resulted from the construction of the Nexus Pipeline project in partnership with the U. S. Fish and Wildlife Service and The Conservation Fund.

Additional funds for the purchase of the preserve came from an anonymous donor, and the Lake Erie Island Conservancy. The Land and Water Conservation Fund through the Ohio Department of Natural Resources may reimburse Put-in-Bay Township Park District for a portion of the purchase price. Funds were allocated to remove invasive plants and restore areas as migratory bird habitat. The site will also be used for passive outdoor recreation --

(Continued on page 16)

Cooper's Woods Dedication

After a twenty-year saga to save Cooper's Woods from development, the commitment and determination of hundreds of individuals has been realized and fulfilled. Those individuals believe that commercial and residential expansion must be tempered by green space, natural areas that reflect the natural beauty of South Bass Island.

Cooper's Woods was sold by the Gus and Delores Cooper Family to the DeRivera Park Trust in 1997. On March 31, 2020, the DeRivera Park Trust sold the property to the Lake Erie Islands Conservancy. Funding for the purchase of Cooper's Woods was provided by the Clean Ohio Conservation Fund, the Lake Erie Islands Conservancy, The Conservation Fund (TC Energy) with the U.S. Fish and Wildlife Service, and a private donation in memory of George, Grace, and John "Bullet" Borman. The LEIC transferred the property to Put-in-Bay Township Park District on June 29, 2020.

The formal dedication of Cooper's Woods took place on September 24. The 18 acres of forested land with unique flora and fauna are now forever preserved and protected as a natural area.

Cooper's Woods is managed and maintained by Put-in-Bay Township Park District. The Lake Erie Islands Conservancy has a conservation easement on the property. A conservation easement is a voluntary, legal agreement between the Park District and the Lake Erie Islands Conservancy that permanently restricts uses of the land in order to protect its conservation values.

More than 60 people attended the dedication. Kelly Faris, Chair of Put-in-Bay Township Park District, gave an overview of the protection of Cooper's Woods. Roger Parker, Chair of the Friends of Cooper's Woods talked about the efforts of the Friends of Cooper's Woods to stop development on the property. Lisa Brohl thanked the numerous organizations and people involved in the efforts to "Save Cooper's Woods." Kendra Koehler prepared a thank you basket for conservation realtor Neal Hess.

After the brief speeches were completed, there was a formal opening ceremony when members of the Put-in-Bay School Environmental Club unveiled the "Welcome to Cooper's Woods" sign.

A surprise presentation took place at the end of the formal ceremony. Lisa Brohl lead the group along the path in Cooper's Woods where a bench has been placed dedicated to Marty and Kelly Faris. The dedication of the bench:

Oh, the Places You'll Go! And will you succeed?

Yes! You will, indeed! (98 and ¾ percent guaranteed.) Dr. Seuss

Thanks to Marty and Kelly Faris for their tireless efforts to preserve Cooper's Woods.

They have been guiding lights in the preservation of Put-in-Bay green spaces for our future.

Of course, both Kelly and Marty Faris were pleased and honored with the presentation of the bench. It was emotional for both of them.

(Continued on page 15)

Photos: Clockwise from Top Right—Marty and Kelly Faris walking back to bench reveal; Mary and Kelly Faris and Family at bench dedicated to their efforts to preserve Cooper's Woods; Alice Lentz, Nora Ladd, Kate Byrnes, Elena Schroeder, Joe Byrnes of the Put-in-Bay School Environmental Club; Dedication attendees listening to Roger Parker speak at the dedication; Lisa Brohl at Annual Meeting; Roger Parker addressing Friends of Cooper's Woods; The beautiful new Cooper's Woods Preserve sign!; Environmental Club members preparing to unveil the "Welcome to Cooper's Woods Preserve" sign; Lisa Brohl, Chair addresses the over sixty people in attendance at the Cooper's Woods dedication; Kelly Faris sharing the history of the effort to save Cooper's Woods; Kelly Faris with one of the "Save Cooper's Woods" signs that were used to encourage support



Middle Bass East Point Preserve-Cleveland and Manderbach Dedication



On October 1, 2020, the Put-in-Bay Township Park District (PIBTPD) dedicated a 2.89-acre wooded parcel purchased from Dr. William Cleveland and his sister Beverly Cleveland. This

Cleveland Tract located at the very eastern tip of Middle Bass Island adds acreage to the Middle Bass Island East Point Preserve. The site now boasts more than 11 protected acres of wooded and open land for migratory bird habitat, walking, and birdwatching. The Middle Bass East Point Preserve is accessible only by kayak or canoe.

These woods are being conserved, in part, by funding and technical assistance made available by TC Energy and its subsidiary Columbia Gas Transmission's Leach XPress Pipeline Project in partnership with the U. S. Fish and Wildlife Service and The Conservation Fund. A grant was also obtained from the Clean Ohio Green Space Conservation Fund for the purchase as well as a donation from the Lake Erie Islands Conservancy. The Park District is providing funds to remove invasive plants and trees from the parcel.

PIBTPD Chair Kelly Faris spoke at the dedication thanking those who assisted with the purchase. He reminded us how our familiarity with these beautiful Islands tends to make us forget how truly unique they are. Tom Bartlett explained the significance of the property for migratory birds and other wildlife. He and his wife Paula with their assistants, have banded birds on site for 8 years. The migratory bird data from this banding program has been crucial in securing funds for the purchase of the parcel.

Dave and Linda Bugoci unveiled the new kiosk/bulletin board/sign that they donated for the preserve.

Thanks to all who attended and to Theodora Keith-Morris, Ann and Ken Shelton, Chris Helman, Nancy Welter, Bruce Miles, Tina Larson, Susan Ungvarsky, Lisa and Russ Brohl, Bob Stausmire, Heineman's Winery, and others who have volunteered and helped make this dedication and property acquisition a reality.

We appreciate the cooperation of the Cleveland family, Neal Hess of Conservation Realty Group LLC, Judy Twarek of Hartung Title, and legal

advisor Marsha Collett for their assistance with this purchase and to Schmidlin Construction, East Point Manor Club, Michael Hopkins, Bright Idea Sign Shop, and Wragg family for their cooperation with the refuse removal, construction of the new protective fencing, signage, and installation of the bat house built by Casey Carty.

The dedication also celebrated the donation of a half-acre parcel by Ron and Marianne Manderbach. This parcel is immediately adjacent to the Costello Tract owned by the Put-in-Bay Township Park District. This area is currently reserved for migratory bird and wildlife habitat with no public access. A new sign was added to the current Costello Tract sign to mark the donation.

About Put-in-Bay Township Park District

In 2006, the Common Pleas Court of Ottawa County, Ohio approved a petition to create the Put-in-Bay Township Park District as a local government entity. It was reaffirmed by the voters of the Bass Islands in 2008. Three Commissioners serve to manage and protect unique island habitats for the public to enjoy.

About Lake Erie Islands Conservancy

The Lake Erie Islands Conservancy was founded as part of the Black Swamp Conservancy in 2000 and received their own non-profit status in 2015. The mission statement of the Conservancy is to encourage conservation and protection of natural and agricultural lands in the Lake Erie Islands for the benefit of this and future generations. www.lakeerieislandsconservancy.org

About The Conservation Fund

The Conservation Fund—makes conservation work for America. By creating solutions that make environmental and economic sense, the Conservation Fund is redefining conservation to demonstrate its essential role in our future prosperity. Top-ranked for efficiency and effectiveness, the Fund has worked in all 50 states since 1985 to protect more than eight million acres of land, including nearly 66,000 acres in Ohio. www.conservationfund.org

About Clean Ohio Green Space Conservation Fund

The Clean Ohio Green Space Conservation Program is dedicated to environmental conservation including acquisition of green space and the protection and enhancement of river and stream corridors. Grant recipients agree to maintain the properties in perpetuity so that they can be enjoyed and cherished for generations to come. The program is administered by the Ohio Public Works Commission. www.pwc.ohio.gov/Programs/Clean-Ohio

Contacts:

Kelly Faris, Put-in-Bay Township Park District Chair, 419-285-4772, kymar@thirdplanet.net.

Val Keefer, The Conservation Fund, 703-908-5802, vkeefer@conservationfund.org



Photos: Above—Group attendee photo at Middle Bass East Point Preserve-Cleveland and Manderbach Dedication; Dave and Linda Bugoci unveiling the new Kiosk they donated; The new Manderbach Tract Sign Below L-R— Kelly Faris speaking to attendees with thanks and a few reminders of how important land preservation is; Attendees listen to Tom Bartlett as he shared about the significance of these properties for migrating birds; Tom and Paula Bartlett explaining a bit about bird banding to dedication guests



Winter Birds to Watch For *By Lisa Brohl*

Winter brings different birds to the island and is a time when we all have a little more time to sit and watch!

It is that time of year when migrating waterfowl come through and stay until the lake freezes. We are usually lucky to see Tundra Swans at Chapman's Point or just off shore at the Scheeff East Point Preserve until it freezes here. If it warms up, they will leave and go back to feed on the



redheads, canvasback, and ring-necked ducks can be seen in the harbor and back monument bay.

The icy rocky flat shores of the eastern side of the island provide habitat this time of year for a hardy shorebird called the purple sandpiper. Look for it where the waves just lap onto the rocks, moving in and out to feed.



unfrozen marshes on the mainland. Diving ducks such as red-breasted and common mergansers, greater and lesser scaup, bufflehead, common goldeneyes are frequently seen feeding offshore until the lake is frozen with goldeneyes usually being the last to depart. Common loons and horned grebes can be seen in late fall as they migrate through. Occasional

This will be a year to watch your feeders for more than the usual black-capped chickadees, white-breasted nuthatches, northern cardinals and downy and red-bellied woodpeckers. We are seeing a slight increase in sightings of tufted titmouse around the interior of the island-first seen at Kit Knaser's feeder. There have been many sightings of more northern birds such as

(Continued on page 5)

Winter Birds to Watch



Photos: Downy Woodpecker by Elizabeth Heineman; Evening Grosbeaks by Lisa Main Ready; Pine Siskin by Sandy Funtal; Lesser Scaup by Elizabeth Heineman

Nobody Knows Island
Real Estate Like We Do
 Call Corky 419-341-4478



Become an LEIC Member for just \$25 for an entire year! Please see page 23 for details.

Put-In-Bay Electric
 766 Duff Road P.O. Box 567
 Put-In-Bay, Ohio 43456
 419-285-6120

Early Christmas Present for the Put-in-Bay Township Park District *By Lisa Brohl*

The Put-in-Bay Township Park District wishes to thank Richard Gump of Gump Construction, Kenneth Fox, Eric Nowak, Nick Fresch, and his crew for their donation of time and materials this fall. The group strengthened sign posts at Scheeff East Point Preserve, installed a bench at the Massie Cliffside Preserve, and put in signs, benches, and fencing at the Cooper's Woods Preserve—all in a time when we needed it done quickly for the public dedication of Cooper's Woods.

The Lake Erie Islands Conservancy and Put-in-Bay Township Park District are extremely grateful to the continuing support from these generous individuals.



Photos: Richard Gump and Ken Fox working on the install of the Cooper's Woods Preserve sign; Nick Fresch working on the site installs

(WINTER BIRDS TO WATCH Continued from page 4)

evening grosbeaks, common redpoll, and pine siskins this year on the mainland. Some years are known as an irruption when food resources are low and/or breeding populations have been higher than normal and the birds come further south looking for food—always a treat for bird-watchers. We usually see more red-breasted nuthatches in the winter but have enjoyed them all year this year.

We hear almost nightly the calls of great-horned and eastern screech owls as they find mates and begin nest building in winter. Northern Saw-whet owls move around some staying for the winter—this small somewhat tame owl is great to see in cedar groves or tangles of wild grape vines. Tom and Paula Bartlett band these small owls at the Scheele Preserve and the North Pond Preserve on Kelleys Island. They have banded over 130 owls already this season.

When snow starts to cover the ground and wind whips over open areas like the monument grounds or airport, we start to see some other northern visitors like snow buntings. Sometimes when out on the ice you can hear buntings or horned larks flying over head. We can hear kinglets in tall evergreens sheltering from the wind or picking bugs out of old spider webs on buildings.

Our favorite winter treat is when a snowy owl is seen on the island. Some

Photos: Opposite Page (Page 4) - Common Goldeneyes by Elizabeth Heineman; Red-breasted Nuthatch by Elizabeth Heineman; Pine Siskin by Sandy Funtal; Evening Grosbeak by Lisa Main Reedy

irruption years, they make a stop on the island and may stay a few days. They favor open areas similar to their tundra breeding grounds or high on a pole, wire, or roof top to hunt mice from. We do not have voles, moles, or shrews here on the island so often the owls do not stay long.

Another favorite spot in the winter is an area with lots of poison ivy. This is where you will find yellow-rumped warblers who switch their diet from insects to poison ivy berries in the winter! Woodpeckers relish the berries also in winter and can be seen in numbers where the poison ivy is thick. Even though we hate the plant, leave some off your yard or paths for overwintering birds.

Trees that still hold fruit in winter like hackberry or dogwood can be full of American Robins and Cedar Waxwings—nice bits of color in a gray winter sky.

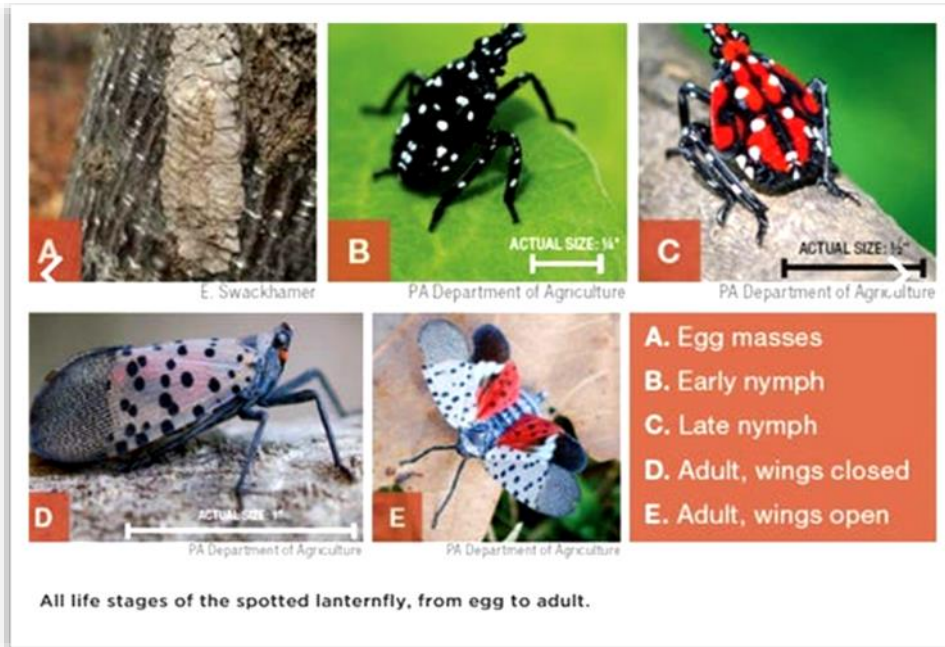
Our sparrow populations change too. The chipping sparrows that nested here last summer are replaced by American tree sparrows from the north.

If you are a new birder, you may want to get a good field guide like Sibley's, Peterson's, or a nice coffee table size like Crossley's. If you prefer digital check out the Merlin, I-bird, or Audubon app. If you want to record your sightings, check out E-bird. A great way to see what others have seen in same place too. Cornell has a feeder watch and there is always the Great Backyard Bird Count in addition to our Audubon Christmas bird count. Please post photos of birds you have seen on our Lake Erie Islands Conservancy Facebook page or group page so that we know what you have seen in our preserves!

So get out and enjoy a winter bird walk at our preserves or enjoy the show at your feeder!

Spotted Lanternfly in Ohio—Watch for it!

By Lisa Brohl



The spotted lantern fly has now been documented in Ohio—the insect was found in Mingo Junction, Ohio near the Ohio border with Pennsylvania. It marks the first documented case of the spotted lanternfly in Ohio. If, and when, the invasive species becomes entrenched in Ohio, experts say it will have a devastating ripple effect on state growers. It was found in early October by Jason Copras and identification was documented with photo by Ben Long on October 19. Further investigation found more insects along the railroad track, some on the tree of heaven, a nonnative invasive tree also native to Asia, that the insect feeds on.

Spotted lanternflies, native to China, Bangladesh and Vietnam and known for their hitchhiking ability, invaded Pennsylvania, Ohio's neighbor to the east, in 2014. Despite Pennsylvania's best efforts to stomp out the bug, it has spread.

Spotted lanternflies annihilate plants and trees by feeding on their sap. They produce a substance that they shoot out with the precision of a water gun. The substance blankets the leaves of plants and blocks photosynthesis. It also facilitates the growth of mold, which leads to rot.

The spotted lanternfly, which is native to Asia, decimates almonds, apples, blueberries, cherries, peaches, grapes and hops, as well as hardwoods such as oak, walnut and poplar.

The life cycle of the flies begins as early as March, when the insects are solid black, hatching from eggs. By mid-summer, the insect is red with black stripes and white dots, about a half-inch in size, and preparing to transition from nymph to adult. From August, the insects grow into adults with wings. They

lay eggs in the fall on tree trunks or cars and are covered with a protective mud-like coating. Into November, spotted lanternflies are easy to find. They are fully grown adults spanning about an inch in size. (See photos by the Pennsylvania Department of Agriculture.) Here on the island, the Put-in-Bay Township Park District has had the Tree of Heaven found on its Dodge Woods Preserve and adjacent private land basally sprayed with herbicide to kill the tree in advance of the spread of the lanternfly. With the islands' vineyards and abundance of oak and walnut trees, this is one insect we do not want to see here. We have seen the effects to our forests with the emerald ash borer—we cannot afford to lose more of our island trees or our vineyards.

Anyone who suspects they have seen lanternflies should call the [Ohio Department of Agriculture](http://www.ohio.gov) at 614-728-6400, contact by email at plantpest@agri.ohio.gov, fill out a form online on the agency's website, contact your county OSU Extension office, or submit your findings using the [Great Lakes Early Detection Network](https://apps.apple.com/us/app/great-lakes-early-detection/id627653474). (<https://apps.apple.com/us/app/great-lakes-early-detection/id627653474>)

<http://www.times-gazette.com/story/news/2020/11/23/spotted-lanternfly-arrives-ohio-officials-urge-vigilance-invasive-species/6270442002/>

<https://www.newsbreak.com/news/2107655859567/spotted-lanternfly-makes-landfall-in-ohio-officials-urge-vigilance?s=oldSite&ss=a3>

European Frogbit By Lisa Brohl

European Frogbit. Found and removed near Petersen Woods-Lawrence Evans Preserve on Middle Bass. This plant that looks like tiny waterlilies has invaded mainland wetland and the North Pond on Kelleys. Hope we can keep it from taking over our Bass Island wetlands. Keep an eye out for it and let us know if you see it.

The example shown below was found at the Kuehnle State Wildlife area on Middle Bass Island.



Photo: Masses of European Frogbit at Kuehnle State Wildlife Area

LEIC Stop on the Island Wide Garage Sale By Lisa Brohl

The LEIC were grateful to John and Paula Ladd for allowing us to set up and be a part of the Island Wide Garage Sale in September in their yard. The Conservancy sold over \$200 worth of rummage donated by members as well as selling t-shirts, jelly, etc. We really appreciate the help of Stacy Clink, Gay Pippert Ladd, Amy Huston, and Ken and Jennifer Farber for setting up, taking down, and working the tables that day.

Photos: Top—Gay Pippert Ladd and Stacy Clink at LEIC Stop Bottom—John and Paula Ladd's Yard



LEIC Tote Bag & More for Sale *By Lisa Brohl*

Wrapping up our 20th year of land preservation, the Lake Erie Islands Conservancy still has recycled canvas tote bags made in the USA for sale for \$20. They would look good wrapped up too!

We still have a variety of tote bags made by Jill Cooks from sail cloth that we have for sale as well. Images of these are attached. Larger bags are \$30 and the small bag is \$20.

We have both solid color Conservancy t-shirts for adults made in the USA with organic cotton and tie-dyed print shirts for kids for sale as well. \$20 each (*see below right*).

If interested in purchasing any of these for yourself or a gift any time of the year, please contact Lisa Brohl at phone or text at 419-366-2087 or e-mail at leiconservancy@gmail.com. Of course, the gift of a year membership with the LEIC would be a great option too (See note below)!



Become an LEIC Member for just \$25 for an entire year!
Please see page 23 for details.



LEIC T-shirts Available!

Any season is a great time to pick up an LEIC t-shirt! Here are new t-shirts in kids sizes and a new look for our adult tees. Still made in the USA of organic materials at LakeScreen Printing in Lorain, Ohio. Contact Lisa at 419-366-2087 or leiconservancy@gmail.com if you would like to purchase one.

AND/OR

An annual LEIC membership gives someone our quarterly newsletter and info on our programs. A donation to our Land Protection Fund in someone's name is a great gift that keeps on giving with the purchase of new preserves for us all to enjoy!



LEIC Calendars Available! *By Lisa Brohl*

As part of our celebration of our 20th year of land preservation on the Lake Erie islands, we are offering calendars for sale. These beautiful calendars make perfect gifts and were designed by Susan Byrnes, Michelle Pennington, and Lisa Brohl. Each month includes most holidays, etc. and we have included most important dates for 2021 from LEIC, LEINWC, and Stone Laboratory. They are selling for \$20 each and are available by calling or texting Lisa at 419-366-2087 or leiconservancy@gmail.com. There is a small \$2 charge per calendar for shipping if you would like them mailed to you.



Photo: LEIC Calendar Cover

Attention Nature Lovers and Photo Buffs: Interested in submitting your Conservancy nature photo(s) for the 2022 LEIC Calendar? See instructions and details below!

- Send all of your Conservancy related entries to LEICPhotoSubmit@gmail.com with "2022 Calendar" in the subject line. Pics for the Newsletter can be sent there too!
- Include the photographer's contact info (name, email, phone, etc.), a short description of subject and details. Make sure to include where/when the photo was taken. Photos should be at least 300 dpi at 11.5" wide by 9" tall.
- If selected, you'll receive photo credit and 2 calendars!

We can't wait to see all of your wonderful submissions, so go enjoy the seasons of the preserves: spring, summer, fall, and winter!!

1 "Your Bank of a Lifetime"
419-285-7340 fnblifetime.com
Bellevue - Catawba - Clyde - Fremont
Port Clinton - Put-in-Bay - Sandusky
First National Bank Established 1875
Proud supporter of the Lake Erie Islands Conservancy

419-285-2608
MIDDLE BASS GENERAL STORE
MIDDLE BASS ISLAND
New Pizza Shop and Bar
Come Visit us .. It is worth the trip

NEWS
INFORMATION
PHOTOS
www.putinbaydaily.com

Cares Act Charitable Contribution Tax Deduction *By Lisa Brohl*

A new law passed this year in response to the COVID-19 pandemic could have implications for your year end giving. The Coronavirus Aid, Relief, and Economic Security (CARES) Act, which was signed into law this past March, is designed to help individuals, businesses and non-profits facing economic hardships during the pandemic. Here is what you need to know as you plan for year end-you have two more months to make contributions that could aid nonprofits such as the Lake Erie Islands Conservancy and Lake Erie Island Nature and Wildlife Center.

The CARES Act expands charitable giving incentives and allows taxpayers who take the standard deduction to also deduct up to \$300 in charitable contributions to qualified charities this year. For those who itemize their deductions, the new law allows for cash contributions to qualified charities to be deducted up to 100% (up from 60% previously) of our adjusted gross income for the 2020 calendar year. Approximately 90% of all individual tax returns now take only the standard deduction. Previously these non-itemized tax deductions were not permitted to take a charitable tax deduction. This is an "above the line" adjustment to income that will reduce your adjusted gross income and thereby reduce your taxable

income. Consider a donation to the LEIC or LEINWC to receive these tax benefits!! Unless this is extended this is available for only the rest of this month!!

Many donors over retirement age like to make a gift from their IRA using their required minimum distributions (RMD). The new law temporarily suspends the requirements for RMD for 2020, meaning you don't necessarily have to take the distribution this tax year. However, a gift from your IRA may still be the way to go. Here are a few reasons why:

*Your gift is used right away, so you get to see the difference you are making.

*You pay no income taxes on the gift. The transfer generates neither taxable income nor a tax deduction, so you benefit even if you do not itemize your deductions.

*Since the gift doesn't count as income, it can reduce your annual income level. This may help lower your Medicare premiums and decrease the amount of Social Security that is subject to tax.

So keep your island charities in mind!!!

Ottawa County Park District Levy Passes *By Lisa Brohl*

The Ottawa County Park District had a .6 mil levy on the ballot in November. The initiative that passed will provide approximately \$1 million per year for capital projects, operations and maintenance and would enable the Park District to gain access to matching funds from organizations outside the county. These funds could potentially be used to support other Park District projects in Ottawa County as well.

The Park District of Ottawa County was created in 1992, but had no source of revenue and relatively inactive until 2017. That year, the Ottawa County Commissioners used grant money from ODOT to develop the Ottawa County Active Transportation Plan. The past few years, the Park District has been working with our neighboring counties to advance parts of the

Plan that cross county borders such as the extension of the North Coast Inland Trail from Elmore to Genoa, and then from Genoa to Millbury, and working to establish and designate the Portage River Water Trail, as well as other projects. The goal of the board is to CONNECT PEOPLE, PLACES, AND PARKS.

Put-in-Bay Township Park District Commissioners Kelly Faris and Lisa Brohl met by zoom with PIB Chamber of Commerce director Peter Huston and Jack Madison of the Ottawa County Park District to discuss what resources and assistance might be available to our Put-in-Bay Township Park District.

Check them out at www.ottawacountyparksoh.org or on Facebook- Ottawa County Parks

LEIC and PIBTPD Wish List

As we close this crazy year, we must continue planning for the future and certainly a better, brighter 2021! Do let us know if you or anyone you know can help out with any of these items at leiconservancy@gmail.com or 419-366-2087. Or you may have skills you wish to contribute—please call! New members—Check us out at www.lakeerieislandsconservancy.org!

- Larger Office Space
- Assistance sorting, organizing office.
- Volunteers Always Needed-spread mulch on trails, removed downed trees and pick up litter-garlic mustard pulling, amur honeysuckle removal-all preserves.
- Website and Social Media Assistance
- Adobe, Access, and Arc GIS Programs or volunteers with these skills.
- Recycled Copying Paper, Ink for Printers (Brother LC 61, HP 970XL, HP 971XL-must not be generic)
- Golf Cart for Summer Transport of tools and personnel.

- Assistance with trail layout, construction, parking, mulching and signage with extension of the trail or boardwalk at the Middle Bass Island Forested Wetland Preserve and the Lawrence Evans Preserve
- 4 small lots adjacent to our Middle Bass Island Forested Wetland Preserve-donations toward the purchase.
- Recycling/garbage station for Cooper's Woods Preserve
- Land Protection Fund Donations for Clean Ohio Grant applications in March

Bass Islands Bird Banding Wish List

Maybe you can't make it out to the islands on the bird banding dates but you still want to help. Here's how!

Please don't feel like you need to buy the entire count needed for each item. Whatever you can do will help! Do let us know if you can help out with any of these items at leiconservancy@gmail.com or contact Lisa at 419-366-2087.

- 12 - poles sets with rebar (@ \$18 per set of 2/ \$108)
- 5 - owl nets (@ \$120/ \$600)
- 60 - AA batteries
- 60 - AAA batteries
- 5 - printings of yearly report (@ \$40/\$200)
- 10 - yearly sign laminations (@ \$5/\$50)
- 2 - 9M X 30 mm songbird mist nets (@ \$130/\$260)



The Dodge House
"Family owned since the 1880's"
www.DodgeHousePIB.com
~Largest Waterfront Family Lodging on Put in Bay~
Perfect for Weddings,
Family Reunions, Corporate Retreats
419-341-9760



Fall Bandout at Middle Bass and South Bass Islands *By Tom Bartlett*

2020 Fall Bandout—Middle Bass Island

Dates: September 26 through October 2
Location: MBI East Point Preserve; Put-in-Bay Township Park District
Participants: Tom Bartlett; Bander (Federal Permit: 21624) Paula Bartlett, Teddi Keith-Morris, Nancy Welter, and Lisa Brohl; Extractors and scribes Ken & Ann Shelton, Tina Larson, Bob Stausmire, Janet Stearns, and Chris Helman; Scribes and Assistants

Birds Banded

- | | |
|-----------------------------------|-----------------------------------|
| 4 Downy Woodpecker | 1 Common Grackle |
| 4 Red-eyed Vireo | 5 Ovenbird |
| 18 Blue Jay | 13 Nashville Warbler |
| 4 Black-capped Chickadee | 1 Connecticut Warbler |
| 6 Red-breasted Nuthatch | 9 Common Yellowthroat |
| 1 White-breasted Nuthatch | 3 American Redstart |
| 1 Brown Creeper | 1 Cape May Warbler |
| 2 House Wren | 1 Northern Parula |
| 1 Winter Wren | 9 Magnolia Warbler |
| 4 Carolina Wren | 1 Bay-breasted Warbler |
| 21 Gray-cheeked Thrush | 2 Blackburnian Warbler |
| 24 Swainson's Thrush | 1 Chestnut-sided Warbler |
| 6 Hermit Thrush | 21 Blackpoll Warbler |
| 3 Wood Thrush | 12 Black-throated Blue Warbler |
| 1 Brown Thrasher | 10 Yellow-rumped (Myrtle) Warbler |
| 2 American Goldfinch | 1 Wilson's Warbler |
| 1 White-throated Sparrow | 4 Northern Cardinal |
| 1 Dark-eyed (Slate-colored) Junco | 1 Indigo Bunting |

36 Species Banded **202 Banded individuals**
7 Banding Days **797 Net hours of effort**
37 Recaptures **1 Escapes/released birds**
1 Casualties **241 Total birds handled**
0.3 Birds banded per net hour **0.41 % Casualties per bird handled**
133 Visitors

2020 Fall Bandout—Middle Bass Island

Dates: September 13 through September 16
Location: Vineyard B & B
Participants: Tom Bartlett; Bander (Federal Permit: 21624) Paula Bartlett, Lisa Brohl, Andy Jones, and Nancy Welter ; Extractors Teddi Keith-Morris and Russ Brohl; Assistants and Scribes

- | | |
|--------------------------------|-------------------------------|
| 3 Downy Woodpecker | 5 Ovenbird |
| 1 Yellow-bellied Flycatcher | 2 Northern Waterthrush |
| 1 Blue-headed Vireo | 1 Black-and-white Warbler |
| 1 Warbling Vireo | 1 Tennessee Warbler |
| 7 Red-eyed Vireo | 5 Nashville warbler |
| 2 Black-capped Chickadee | 1 Common Yellowthroat |
| 1 Red-breasted Nuthatch | 4 American Redstart |
| 4 House Wren | 2 Cape May Warbler |
| 1 Winter Wren | 8 Magnolia Warbler |
| 1 Veery | 8 Bay-breasted Warbler |
| 14 Gray-cheeked Thrush | 3 Blackburnian Warbler |
| 62 Swainson's Thrush | 3 Chestnut-sided Warbler |
| 9 American Robin | 24 Blackpoll Warbler |
| 1 Gray Catbird | 4 Black-throated Blue Warbler |
| 1 Purple Finch | 7 Northern Cardinal |

30 Species Banded **187 Banded individuals**
4 Banding Days **525 Net hours of effort**
4 Recaptures **1 Escapes/released birds**
1 Casualties **193 Total birds handled**
0.3 Birds banded per net hour **0.52 % Casualties per bird handled**

Birds Banded

Red = New species banded for South Bass Island
Bold = Uncommon species banded for South Bass Island



Photos: Ovenbird netted during banding; Dr. Andy Jones and Julia Mitchell assisted at the bird banding station at the Vineyard. Julia was involved with the purchase of Scheeff when working with Western Reserve Conservancy

The Candy Bar
 170 Delaware Avenue
 Put-in-Bay, Ohio
 419-285-2920

Handmade chocolates, fudge, saltwater taffy, ice cream and over 500 kinds of candies! (Find us on Facebook!)

POB
 THE SWEETEST BAR ON PUT-IN-BAY!
CANDY BAR

amazon smile

Support Lake Erie Islands Conservancy by shopping at AmazonSmile.

When you shop at AmazonSmile, Amazon will donate to Lake Erie Islands Conservancy. Support us...

SMILE.AMAZON.COM

ROBERT APLING + ASSOCIATES 2155 Oak Harbor Rd.
 Fremont, OH 43420
 419-355-8200

Providing highly personalized tax, accounting, and financial advice

Great American Outdoors Act *By Lisa Brohl*

Congress passed the Great American Outdoors Act (GAOA) last summer. The Act will provide full and permanent funding for the Land and Water Conservation Fund (LWCF) which is supported by royalties from offshore oil and gas revenues. The LWCF has never been fully funded but has provided our local Park District with funds for the purchase of the Middle Bass Island East Point Preserve and the Benjamin Woods Preserve in the past when funds were available. The GAOA also includes the Restore Our Parks Act which invests \$1.9 billion annually for five years to address a maintenance backlog in national parks and other public lands.

The Lake Erie Islands Conservancy, Put-in-Bay Township Park District, and the Lake Erie Islands Nature and Wildlife Center signed on in support for this initiative.

GREAT AMERICAN OUTDOORS ACT

SIGNED INTO LAW

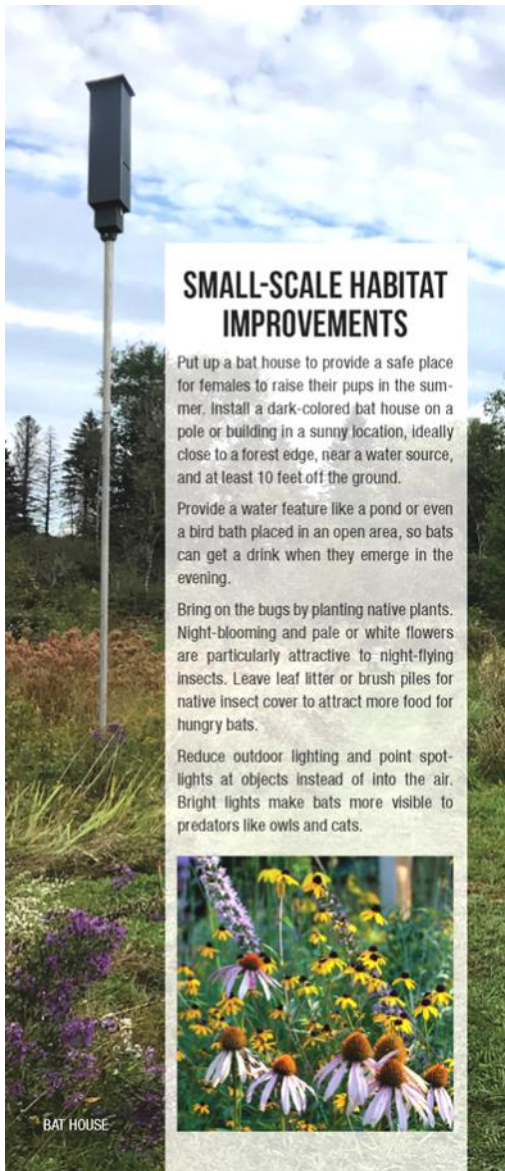
Managing Habitat for Bats—A Guide for Landowners and Managers

The Ohio Division of Wildlife recently published a brochure with information on bats for home and habitat owners. Check it out at <https://lakeerieislandsconservancy.org/bats/> Or call Lisa Brohl at 419-366-2087 for a hard copy. If you need quantities, please contact Sarah Stankovich at Sarah.Stankovich@dnr.ohio.gov or check out the Ohio Bats Working Group

website too.

Sarah visited the island in March of 2019 looking for bats in our caves and elsewhere. Bats are having such a hard time now with white-nose

(Continued on page 11)




SMALL-SCALE HABITAT IMPROVEMENTS

Put up a bat house to provide a safe place for females to raise their pups in the summer. Install a dark-colored bat house on a pole or building in a sunny location, ideally close to a forest edge, near a water source, and at least 10 feet off the ground.

Provide a water feature like a pond or even a bird bath placed in an open area, so bats can get a drink when they emerge in the evening.

Bring on the bugs by planting native plants. Night-blooming and pale or white flowers are particularly attractive to night-flying insects. Leave leaf litter or brush piles for native insect cover to attract more food for hungry bats.

Reduce outdoor lighting and point spotlights at objects instead of into the air. Bright lights make bats more visible to predators like owls and cats.



BAT HOUSE

GET ASSISTANCE

Before you take action, consider creating a management plan for your property. Identify your objectives and steps to take and then contact a natural resource professional for help. They perform site visits with landowners and offer advice on best management practices, as well as information on opportunities for financial assistance to help achieve management goals.

A list of natural resource professionals can be found at [The Ohio Bat Working Group](http://u.osu.edu/OBWG) website <http://u.osu.edu/OBWG>, look under the 'Landowner Resources' tab.

Consult with a **State Forester** prior to any timber harvest. Use *Call Before You Cut* by phone at 877-424-8288 or on the web at callb4ucut.com/ohio/.

You can call the Division of Wildlife at 1-800-WILDLIFE to be connected with a Private Lands Biologist in your area.

MANAGING HABITAT FOR BATS

A GUIDE FOR LANDOWNERS AND MANAGERS



TO LEARN MORE ABOUT BATS, FOLLOW US ON FACEBOOK:
[HTTPS://WWW.FACEBOOK.COM/OHIOWBG/](https://www.facebook.com/ohiobwg/)



OHIOWAT WORKING GROUP
<http://u.osu.edu/OBWG>

PROD 3182 COVER: HOARY BAT PHOTO BY NINA HARFMAN

Thanks to our Island Winter Bird Sale Team!! *By Lisa Brohl*

We wish to thank all those who ordered bird seed from our Conservancy sale this fall—we made \$\$ for preserving island lands. We are grateful to Titgemeier’s Feed and Garden for working with us on our sale, Russ Brohl for transport, Kelly and Marty Faris for taking orders, Heineman’s Winery for providing the freight truck and

storage, and Miller Boat Line for ferry fare. The delivery team of Mike Byrnes, Russ and Lisa Brohl, Pinky Batt, Rudy Rence, Talii Steidl and Elora Hubner made quick work of getting bird seed to everyone’s door step—even Middle Bass! Enjoy your feeders this winter!



Photos: Dustin Heineman with freight truck; Theodora Keith-Morris helps with delivery at Middle Bass; Mike Byrnes, Pinky Batt, Rudy Rence and Russell Brohl; Kip Nickerson of Titgemeier’s with forklift; Russ Brohl getting ready for deliveries

(MANAGING HABITAT Continued from page 10)

syndrome that some may end up on the endangered species list. This past fall Michelle Heineman found a red bat roosting in leaf litter at Cooper’s Woods Preserve—red bats are migratory. Hoary and silver-haired bats were

both found at Middle Bass in 2019—one found dead on private property and the other in the bird banding mist nests of Tom Bartlett at the Middle Bass Island East Point Preserve. We hope that bats find the newly erected rocket bat house at the Preserve. The abundance of insects on the islands make them great bat habitat!



BIG BROWN BAT

Bats play an important role in the ecosystem by consuming large numbers of night-flying insects including beetles, moths, mosquitoes, and other agricultural and forest pests. One of the threats to bat populations is conversion of forest habitats to non-forest uses. Bats often return to the same areas annually, so losing a known roosting or foraging area can have negative effects depending on factors such as the species impacted and the surrounding land use. Implementing various management methods on both public and private land could help to enhance existing habitat or create new habitat for bats to mitigate losses elsewhere.

Native Ohio bats have a variety of habitat needs; they require places to hibernate, freshwater sources for drinking, and healthy forests for roosting and foraging. Appropriate land management that maintains a wide variety of quality habitats, from wetlands and riparian areas to forested ridgetops, is essential. Even land-owners without large amounts of property can help create favorable conditions for bats.

No single type of management will work for all bat species, but the techniques outlined in this guide are aimed at creating and maintaining the general habitat features that are beneficial to most bats.

LARGE-SCALE HABITAT MANAGEMENT

Maintain a mosaic of habitats by providing a mixture of open areas, forested areas, and water to meet the foraging and roosting needs of bats.

Managing trees is critical to supporting bat populations. Maintaining the following trees on your property will be beneficial:

- Large diameter live trees (20+ diameter at breast height (DBH))
- Large dead trees (called snags). You can create snags using a variety of methods; ask a professional for advice if you are interested in doing this
- Trees of any size with exfoliating bark, crevices, or cavities for roosting
- Trees with the above characteristics located in sunny gaps in the tree canopy

Tree cutting and thinning around potential roost trees to increase sun exposure can be beneficial, but this work should only be done from October 1 to March 31 to protect roosting bats.

Eliminate chemical use like pesticides and insecticides since bats eat insects. When necessary, use a targeted pesticide or insecticide and avoid broadcast spraying.

Remove non-native, invasive plants that negatively impact the diversity and overall health of a forest, including the insect community.

Maintain riparian zones/wetlands to provide important foraging areas for bats.

- Remove and control invasive plant species so that access to open water is not restricted
- Do not dump yard waste, garbage, or otherwise fill in open water
- Do not put chemicals in the water, as they can kill insects. Consider using fish to manage plants and aquatic insects



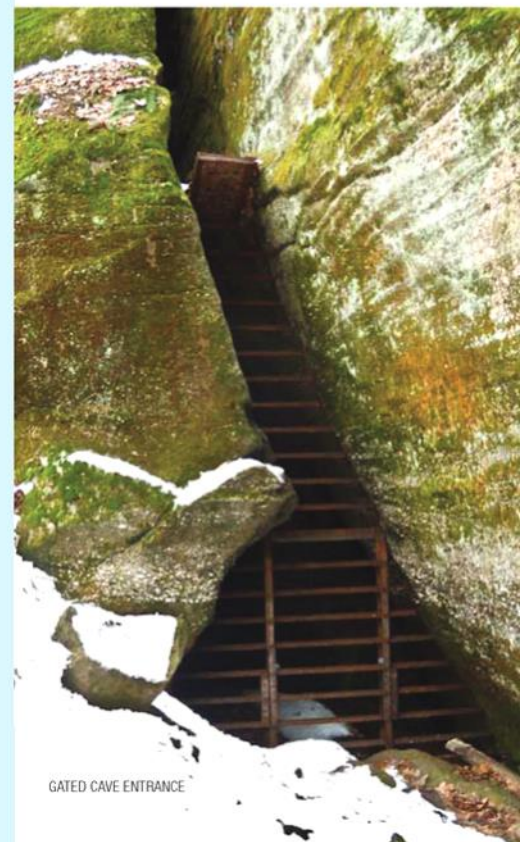
SILVER-HAIRED BAT

HIBERNACULUM MANAGEMENT

For bats that hibernate, caves and rock ledges are important, sensitive habitats.

Gating cave entrances with bat-friendly gates helps protect bats from human disturbance. This should only be done with help from a qualified contractor, as gating can change the airflow and temperature inside the cave, and correct gate specifications are critical.

Maintain habitat near hibernacula by leaving suitable roost trees near a cave or mine entrance. Creating or maintaining a nearby water source is also beneficial.



GATED CAVE ENTRANCE

December Bird Banding *By Lisa Brohl*

On December 3 and 4, bird banding duo Tom and Paula Bartlett visited the Bass Islands for some feeder bird banding. On South Bass Island, they banded at the home of Russ and Lisa Brohl with the assistance of extractors Nancy Welter and Lisa Brohl. They also banded at the home of Susan Ferguson where they caught a red-breasted nuthatch.



White breasted nuthatch, downy woodpecker, and black-capped chickadees were all recaptured from 2018 and 2019. It is no surprise that these year round resident birds would be recaptured at the same feeder. It was a surprise when a slate-colored junco was recaptured who had been banded at the Brohl's November 29, 2018! This means this bird that nests further north has come back to the same feeder for more than one winter. These birds made over 500 birds banded in 2020 on South Bass Island.

In the evenings, they tried to call in northern saw-whet and eastern screech owls at The Vineyard owned by the Barnhill family. An eastern screech owl caught on the second night had been banded by Tom the previous year.

On the morning of December 4, the banding team visited the feeders of Theodora Keith-Morris on Middle Bass Island. There they recaptured a black-capped chickadee that had been banded the previous spring and a white-breasted nuthatch banded the previous fall.

Thanks to Miller Boat Line for passenger fare for the banding team and to Bob Glauser for the use of his boat to get to Middle Bass.

Recaptured Banded Birds - December 2020 - Bass Islands

Date	Band Number	Species	Age/ Sex	Banded	Age/ Sex	Min Age
SOUTH BASS Island						
3-Dec	1225-33026	Eastern Screech-Owl	AHY-U	12/3/2019	SY-M	2
3-Dec	2821-93089	Downy Woodpecker	TY-M	12/3/2019	SY-M	2
3-Dec	2870-83066	Black-capped Chickadee	AHY-U	12/3/2019	HY-U	1
3-Dec	2870-83070	Black-capped Chickadee	AHY-U	12/3/2019	HY-U	1
3-Dec	2870-10698	Black-capped Chickadee	AHY-U	12/3/2019	HY-U	1
3-Dec	2821-24318	White-breasted Nuthatch	AHY-F	11/29/2018	HY-F	2
3-Dec	2831-31510	White-breasted Nuthatch	HY-M	12/2/2020	HY-M	<1
3-Dec	2870-23509	Slate-colored Junco	AHY-M	11/29/2018	HY-M	2
MIDDLE BASS ISLAND						
4-Dec	2840-14153	Black-capped Chickadee	AHY-U	4/30/2018	AHY-U	3
4-Dec	2831-31477	White-breasted Nuthatch	HY-F	9/29/2020	HY-F	>1

Photos: Above—Red-breasted nuthatch from Susan Ferguson's feeder Below—Nancy Welter with slate-colored junco; Lisa Brohl with downy woodpecker



LEIC Annual Meeting Minutes

Lake Erie Islands Conservancy

Annual General Meeting - Thursday, September 24, 2020

3:30 PM - The Goat Restaurant

The Annual General Membership Meeting was called to order by Chairman Lisa Brohl.

Minutes of October 5, 2019

Moved by Marsha Collett that the Annual General Membership Meeting Minutes of October 5, 2019, be approved. Second by Kristin Stanford. Voice vote. All yes. Motion carried.

Financial Report:

Moved by Marty Faris that the Financial Report be approved. Second by Marsha Collect. Voice vote. All yes. Motion carried. As of September 30, 2020. Motion carried. The report showed a total of \$124,192.13 in all funds. General Fund, \$112,976.19; Land Protection Fund \$8790.94; and Stewardship Fund \$2,425.00.

Accomplishments:

Lisa reviewed a list of accomplishments: Middle Bass Island East Point Preserve-Cleveland Dedication will be held at Middle Bass Island on October 1; the Cooper's Woods Dedication was very successful with 59 people attending; the Dodge Woods Preserve Addition was completed.

Board of Directors for 2021-2022:

Moved by Dave Bugoci that members John Ladd, Dustin Heineman, Paula Ziebarth, Bruce Miles, and Ken Farber be approved for an additional two year term as members of the Board of Directors of the LEIC. Second by Marsha Collett. Voice vote. All yes. Motion carried. [See Appendix A.]

Advisory Council:

Nancy Welter has moved from Middle Bass Island and has resigned from the LEIC Board of Directors. Moved by Lisa Brohl that Nancy Welter be approved as a member of the Advisory Board of the LEIC. Second by Dave Bugoci. Voice vote. All Yes. Motion carried.

Position of Historian for the LEIC

Moved by Kalan Cap that the position of Historian be created and that Elizabeth Heineman be approved to fill this position. Second by Susan Byrnes. Voice vote. All yes. Motion carried.

LEIC Calendar:

Susan Byrnes gave an overview of creating a 2021 Colander for the LEIC.

Thanks You:

Lisa Brohl thanked Neal Hess (Conservation Realtor), for his invaluable assistance, Put-in-Bay Township Park District, the Lake Erie Islands Nature and Wildlife Center, The Ohio State University Stone Lab, the National Park Service Perry's Victory and International Peace Memorial, the Miller Boat Line, the Goat Restaurant for providing the food for the celebration of the Dedication of Cooper's Woods, and for the Heineman Winery for providing the champagne.

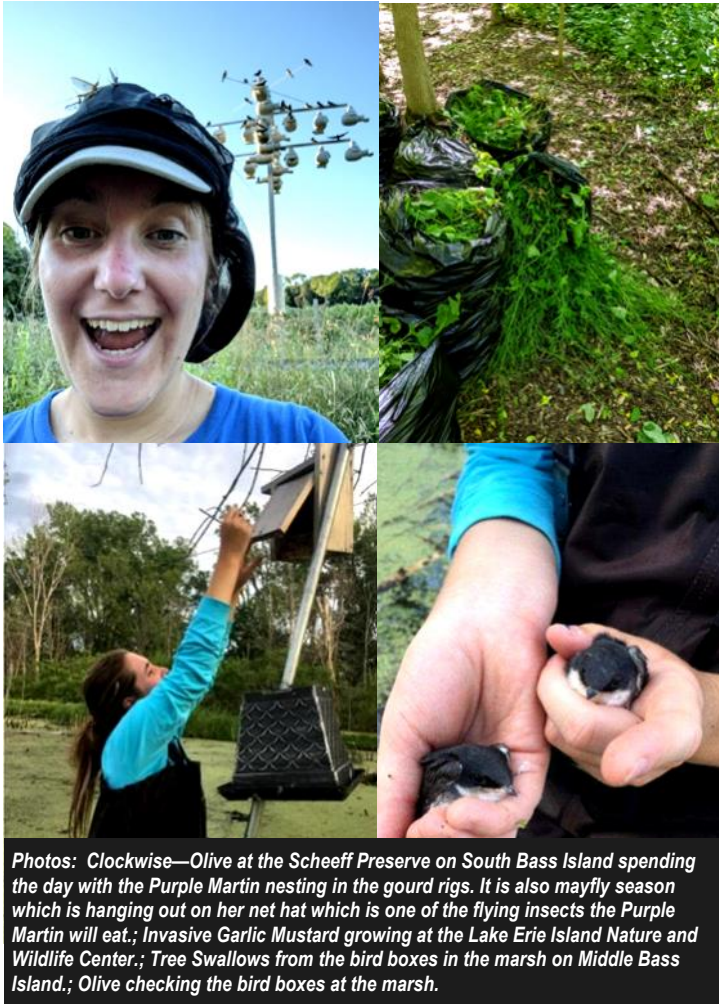
Adjourn:

Moved by Paula Ziebarth that the Annual General Membership Meeting be adjourned. Second by Jean Hilt. Voice vote. All yes. Motion carried.

Kelly Faris



2020 AmeriCorps Intern Olive O'Rourke



Photos: Clockwise—Olive at the Scheeff Preserve on South Bass Island spending the day with the Purple Martin nesting in the gourd rigs. It is also mayfly season which is hanging out on her net hat which is one of the flying insects the Purple Martin will eat.; Invasive Garlic Mustard growing at the Lake Erie Island Nature and Wildlife Center.; Tree Swallows from the bird boxes in the marsh on Middle Bass Island.; Olive checking the bird boxes at the marsh.

As you have seen by the photos shared, Olivia O'Rourke took the pandemic in stride and we enjoyed having her as our AmeriCorps intern this summer! Olive was shared between our Conservancy, the Put-in-Bay Township Park District, and the Lake Erie Islands Nature and Wildlife Center. Below is part of her exit report with the AmeriCorps program.

Please summarize all of your project work completed for your entire term of service. Which of these projects are you most proud of? Summer 2020 as the AmeriCorps Intern for the Lake Erie Islands Conservancy and Lake Erie Islands Nature and Wildlife Center was nothing short of incredible. I had been aware of the opportunity AmeriCorps offered on the islands but filling the position allowed me to get my hands on experience. Covid-19 did not prevent me from any experience but limited me contact with others and large group interactions of other environmental island enthusiasts. We kept our safety protocol in check. My intern duties were providing time at island preserves and the nature center. The island preserves needed daily attention as far as maintaining trails, checking on the habitats, pamphlet stocking. Close to my heart are the preserves on Middle Bass Island that were projects in the making; the trails needed to be cut back of brush and debris along with foliage cut back for the trail to be utilized. Next, the MBI Preserve prothonotary boxes were checked on a regular basis. I would spend the entire day at South Bass Island but would try and check the MBI preserves every evening by utilizing them; I felt it was important to walk the trails and make sure all garbage was picked up and ready to go for the next adventure. I was always amazed as to what was left behind! Being active at the Middle Bass Preserves which is my backyard, will always be a proud moment. My most highlighted project was working with the Purple Martins on

South Bass Island at the Scheeff Preserve. I have a passion for ornithology so I fell in love with this project. I learned so much from my hands-on experience with keeping data on these birds. I measured their growth, cleaned their nesting gourds, and spent time maintaining their habitat. Due to Covid-19 the amount of foot traffic was slow so visitors could actually stop and observe what the Scheeff Preserve has to offer. The preserve is beautiful and the island is very fortunate to have such a site for the Purple Martin to come and breed every year. I had the opportunity to work with Paula Ziebarth and the Green Creek Wildlife Society when they were on South Bass for bird banding; they banned the Purple Martin in late July. The Lake Erie Island Nature and Wildlife Center was closed due to Covid-19 but that did not stop the dedicated staff; another favorite project was being able to help create virtual videos from various sites that the nature enthusiast would have observed either in the Island Nature Camp setting or visiting the center with family and friends. I know the videos were posted and my family and friends enjoyed them. The center kept me busy with data entry or folding newsletters but I prefer being outside in the environment even if I was clearing garlic mustard weed!

What other jobs/career fields would you be interested in learning more about? Having a positive impact on the environment is where my interests are and where I plan to have a career. I plan to go beyond the educational outreach program that merely educates people about sustainability and their quality of life. I want to be implementing the positive impact and ensuring future generations; where are those green jobs?

Did your experience during this internship influence your career goals? If so, how? The Lake Erie Islands have so much to offer and I feel that is a best kept secret! The Lake Erie Island Conservancy has created Island Preserves that allow visitors to stop, take note, and be engaged. The Island Preserves are blessed with wildflowers, migrating birds, beaches, cliffs, wetlands; once you take in all that beauty on your island nature walk (which you leave not knowing that all that existed right here on our Ohio island in Lake Erie) how can you not join in the conservation and protection of our environment. As the AmeriCorps summer island intern I had the experience of taking in the environment of the islands which I have never taken for granted but realize the need to continue to conserve and protect.

Do you have a job, internship, or apprenticeship lined up after you complete your term? No

Please describe in greater detail what your plans are after you complete this internship. I plan to pursue a degree in environmental studies at Saint Mary's College in Notre Dame, Indiana. I would love to continue working in the environmental field to help guide my education goals.

Please describe how you plan to use your education award. The Educational Award received from this internship will go towards tuition at Saint Mary's College.

We value your feedback and use these reports to improve experiences for future members of our program. Please use this space to add any additional comments. My intern experience provided me the opportunity to gain hands-on experience which I took advantage of and thoroughly enjoyed. To improve the experience is to keep the intern in the field as much as possible!

The Legendary Blue Frog of Middle Bass Island! *By Coyote Peterson*



For anyone that visits the Island of Middle Bass it's no secret that a certain magic seems to run its course through this lake locked landmass. I have had the adventurous pleasure of exploring several of the Erie Islands, but nothing holds a special place in my heart like the marsh on Middle Bass. Officially named the Kuehnle Wildlife Area, this expanse of murky water and a seemingly overabundance of plant life, is a coveted paradise for a number of incredible animal species. There is a resident beaver who has built an all too noticeable lodge, a slithering society of Lake Erie Water snakes, countless wading birds, the occasional nesting pair of Bald Eagles, snapping turtles, painted turtles, Blanding's turtles, a variety of fish species and more bull frogs than any location I have ever seen.

My name is Coyote Peterson and I host a relatively popular series of animal adventure shows on the **Brave Wilderness** YouTube channel. If you haven't heard of it just give us a search, I promise you will find a rabbit hole of animal encounters that are certain to be wildly entertaining!

The genesis of my wildlife filmmaking career is rooted in the Middle Bass Marsh and I have been documenting species at this location for over a decade. I thought I'd seen it all until the summer of 2020 revealed from

within its duckweed covered waters an anomaly so rare, it warrants a written article. Ladies and Gentlemen meet the Blue Bull Frog!

No there is nothing wrong with the color on your screen, and no you aren't going crazy...that frog is 100% blue. I know what you are thinking, because I was just like you the first time I saw it. THERE'S NO WAY...this poor frog must have gotten into some kind of chemicals, or maybe it hopped into some wet paint that was absorbed into its skin! Frogs are supposed to be green, or brown, or brownish green with some black spots! This is not right...it's a mutant frog and I can hardly contain my excitement because I know I am not crazy... that frog is BLUE!

I am not crazy and neither are you. It is a blue frog and here is the answer as to WHY its blue.

First, let's make one thing completely clear. This is NOT a new species, this amphibian is your average American Bull Frog (*Lithobates catesbeianus*), the same species that you hear and likely see every summer in almost any body of water in Ohio. When bull frog tadpoles hatch from eggs they spend a couple summers growing before eventually metamorphosing into frogs.

(Continued on page 15)

Photos: Above—Blue Frog! Below Left—Blue bullfrog Below Right—Coyote Peterson with snapping turtles Opposite Page : Upper Left—Side view of Blue bullfrog Upper Right—Blue vs. Green!





(THE LEGENDARY BLUE FROG Continued from page 14)

As the tiny froglets begin to mature their pigmentation begins to change to help blend into the environment, providing the classic bullfrog color scheme, but sometimes a little mutation magic can occur with some stunning results.

When a population of animals is isolated on an island the genetic diversity often becomes limited, which can eventually lead to mutations. Sometimes these mutations affect pigmentations and the result is an animal that is visibly different in color than the rest of the population. In the case of our blue frog, this mutation is called axanthism. This aberration has been documented in a variety of amphibian species, including bull frogs, and while there is a long-winded scientific explanation that defines how, what and why axanthism happens, I am going to keep it simple.

Frogs have various layers of pigment cells in their skin and believe it or not, the base layer is blue. As the frog develops right from the egg, a certain amount of yellow pigmentation is produced and when the balance is equal, frogs become or rather appear green. This is because blue and yellow mixed together make green! Axanthism can most easily be defined as a mutation where certain yellow producing pigment cells are lacking or not working properly!

That is why we are now looking at a **Blue Frog!**



In the summer of 2020 my team and I made many attempts at safely catching and documenting these frogs and we produced two episodes. One which shows just how hard these frogs can be to catch and another that finally gets one up-close for the cameras. Blue frogs are very much in tune with the fact that they don't look like the other frogs and in nature, abnormal coloration usually leads to a short life span, as predators can more easily target them. As long as they stay one or two hops ahead of impending doom there is a decent chance that some of these blue beauties will go onto live for several summers.

To date I have personally identified a total of 5 blue frogs living in the Middle Bass Marsh and I am sure there are a handful more. Scientists don't exactly know how often this kind of natural anomaly hops up in the wild but it's rumored that these frogs are one in a million! If you get the chance to visit Middle Bass Island during the warm summer months and find yourself bravely walking along the marsh at night, I'd say you have a chance of catching a glimpse of the legendary blue frog!

For more information and to see these incredible frogs in action make sure to check out these episodes on the Brave Wilderness Channel!

Blue Frog – See it to Believe it! <https://bit.ly/bluefrogsighting>

Blue Frog Caught! <https://bit.ly/bluefrogcaught>

Brave Wilderness Channel <https://bit.ly/bravewildernessyt>

Reel Bar Donation!



Photo: Andy Christianson and John Ladd

Thanks again for the generous donation from the Annual Bar Stool Challenge from the Reel Bar!

Shown here is Manager Andy Christianson handing the donation check to our ever-faithful LEIC board member John Ladd.

(COOPER'S WOODS DEDICATION Continued from page 2)

A reception at the Goat Restaurant followed where attendees raised glasses celebrating the "end of the saga" with champagne contributed by the Heineman Winery. Refreshments were provided by the Goat Restaurant.

Cooper's Woods has a unique assemblage of wildlife: white-tailed deer, raccoon, red fox, coyote, and the ever present chipmunk. Over 110 species of birds have been documented.

Cooper's Woods is one of the largest intact forested areas on South Bass Island. This upland forest's composition is closer to that found on morainal ridges to the north in Canada. Sugar maple, common hackberry, northern red oak, white oak, basswood, black cherry, American elm, slippery elm, and black walnut are scattered throughout the 18 acres of the preserve.

In the spring, Cooper's Woods displays an abundance of Dutchman's Breeches, Appendaged and Virginia Waterleaf, Purple Cress, Cut-leaf Toothwort, Blue Phlox and South Bass Island's most spectacular display of Large-flowered Trillium.

Arbor Inn B&B
A Quiet Couples Retreat
419-285-2306
www.arborinnplb.com

Gump Builders Inc.
419-285-5151
Septic Systems-Foundations-Excavations

RESIDENTIAL COMMERCIAL
NORTHERN EXPOSURE
INVESTMENTS
Joe Kostura
(419) 341-2366 or (419) 285-3106

BUILDING	SEAWALLS
ROOFING	CONCRETE
ADDITIONS	PATIOS
REMODELING	DRIVEWAYS
PLUMBING	FOUNDATIONS
PAINTING	STONEMWORK

SKYTRAK LIFT FOR RENT
BOBCAT & EXCAVATOR SERVICES

walking, photography, and bird watching. The Benjamin Woods Preserve will be opened in the spring of 2021.

Put-in-Bay Township Park District is pleased to announce that with the acquisition of the Benjamin parcel, more than 116 acres of land have been preserved and protected. We are thankful to the Benjamin family, Hartung Title, Reitz Engineering and legal advisor Marsha Collett for assistance with the purchase.



Photo: Old Entry Gate to Benjamin Property Photo by Lisa Benjamin

“Put-in-Bay Township Park District has been privileged to work with The Conservation Fund to acquire environmentally sensitive areas,” stated Kelly Faris, Chair of Put-in-Bay Township Park District. “These lands are now protected for this and future generations. The Park District is dedicated to protecting unique areas that sustain the heritage of the Lake Erie Islands. The Conservation Fund is an extremely valuable partner in this effort.”

“The support from The Conservation Fund has allowed the Park District to add additional acreage to our Cooper’s Woods Preserve that is now over 21 contiguous acres of island forest and karst topography providing habitat for migratory and nesting birds, lead morph of the red-backed salamander, eastern fox snake, and other wildlife,” said Lisa Brohl, CEO of Put-in-Bay Township Park District and Chair of the Lake Erie Islands Conservancy. “Future residents and visitors will be so appreciative of the Fund’s assistance to preserve this unique forest.”

About Put-in-Bay Township Park District

In 2006, the Common Pleas Court of Ottawa County, Ohio, approved a petition to create the Put-in-Bay Township Park District as a local government entity. It was reaffirmed by the voters of the Bass Islands in 2008. Three Commissioners serve to manage and protect unique island habitats for the public to enjoy.

About Lake Erie Islands Conservancy

The Lake Erie Islands Conservancy was founded as part of the Black Swamp Conservancy in 2000, receiving their own non-profit status in 2015. The mission statement of the Conservancy is to encourage conservation and protection of natural and agricultural lands in the Lake Erie Islands for the benefit of this and future generations. www.lakeerieislandsconservancy.org

About The Conservation Fund

The Conservation Fund makes conservation work for America. By creating solutions that make environmental and economic sense, the Conservation Fund is redefining conservation to demonstrate its essential role in future prosperity. Top-ranked for efficiency and effectiveness, the Fund has worked in all 50 states since 1985 to protect more than eight million acres of land, including nearly 66,000 acres in Ohio. <http://www.conservationfund.org/>



New LEIC Historian!

11-22-2020

The Lake Erie Islands Conservancy has added a historian role to help preserve our rich history. Elizabeth Heineman has volunteered to be our first historian and we could not be happier!

Going forward, she will help document events, dedications, acquisitions, and timelines as our Conservancy grows and evolves. Please help welcome Elizabeth to this new role and feel free to send her your stories of the past/present and copies of news clippings!

The past is so important! She has been mining through many files in the office and we plan to have a historian’s corner in future newsletters... think “throw back”. We learn from the past to build on the future and preserve our lake Erie islands for future generations to enjoy!

Linda Shull, LEIC Board member

Elizabeth Heineman Bio

I was born at Magruder Hospital, days later flew home to PIB in 1 of the 3 Ford Trimotors. Growing up on PIB in those days was an adventure everyday. In winter ice fishing, sledding, snowball fighting. Spring/ Summer building forts in the woods, walks on shady paths, biking, swimming at the airport pool. Hanging out with Aunt Merc and walks to the beach and wading out to Buckeye. The older I got the adventures got bigger. Those I won't mention. As a child of the islands I started working at age 12. Bussing tables at the Boathouse, waitressing, bartending, barbacking, retail at various establishments, working for my father at Heineman Winery, maintenance at the monument with Ty, Jim, and Walt, managing Tony’s Place for my Aunt Merc, and Girl Friday at PIB Yacht Club and meeting a million and half great people alone the way. In my spare time I found a passion for travel, gardening, birding, cooking, my many pets and of course Michael. And here we are today, due to the coronavirus, forced to retire early, I've found myself volunteering as a historian for the LEIC and enjoying working on my photography. What a wonderful change of pace!



Photos: Top—Our new historian Elizabeth Heineman sporting a stylish mask during the pandemic; Below Left—Elizabeth catching a great shot; Below Right—Elizabeth Heineman and Karen Wilhelm at Massie’s Cliffside Preserve

PIBTPD Employees

The Put-in-Bay Township Park District is pleased to announce the hiring of two employees: Courtney Blumensaadt and Patrick Green.

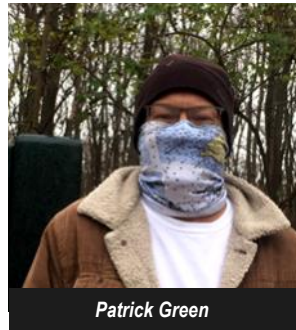


Courtney Blumensaadt

Courtney Blumensaadt will serve as the treasurer for Put-in-Bay Township Park District. She and her family are year round residents of South Bass Island. Courtney has worked for the Village of Put-in-Bay since 2018 and is active in community groups such as the Put-in-Bay Recreation Committee and is a board member of the Lake Erie Islands Nature and Wildlife Center.

Under the direction and guidance of Ms. Blumensaadt, the Park District has become a member of the State of Ohio UAN system. The Uniform

Accounting Network (UAN) is a software package created by the Auditor of State's office to support the accounting, payroll and financial management activities of local governments in Ohio. UAN, along with computer equipment and technical support provided by the Auditor of State's office, makes it easier for public officials to apply the required accounting standards to their financial record keeping. More than 2,000 Ohio cities, townships, villages, public libraries, park Districts, and special districts are using UAN in their daily operations. Put-in-Bay Township Park District is audited by the State of Ohio every two years.



Patrick Green

Patrick Green has been hired as the first groundskeeper of the Park District. Patrick lives on the island year round and works for the Put-in-Bay Local School as custodian. You can often see Patrick walking Cooper's Woods Preserve with his dog.

Over the years, individuals have volunteered to monitor the trails and dispose of the garbage and refuse and collect the material from the recycling stations. The Park District owes a debt of

gratitude to the volunteers: Ken Farber, AmeriCorps volunteers, Linda Shull, the Gump Construction Company, Lake Disposal, YardWorks, Burns Pierce, Mike and Joe Byrnes, Jackie Wertenbach; and at Middle Bass, the Schmidlin Construction Company and volunteers Del Taylor, Chris Helman, Theodora Keith-Morris, Nancy Welter, Bob Stausmire, Bruce Miles, Ken and Ann Shelton, and Russell Brohl and all who have and continue to assist in the maintenance and preservation of our preserves! Today, Put-in-Bay Township Park District has over 100 acres to maintain.

Put-in-Bay Township Park District was created by an initiative petition presented to the Court of Common Pleas in Ottawa County. At the General Election on November 6, 2007, an overwhelming majority of the electorate voted to affirm the creation of the Park District.

A three member Board of Commissioners oversees the operations of the Park District. The members are appointed by the Judge of Common Pleas Court for a term of three years. The present Commissioners, Lisa Brohl, Kelly Faris, and Kendra Koehler, serve without compensation. We thank Kelly Faris for serving a treasurer from 2007 to present.

The Park District is looking for a part-time employee at Middle Bass to put in a few hours a week. If interested in this position, please contact Kelly Faris at kelmar@thirdplanet.net.

Grant for Scheeff East Point Preserve *By Lisa Brohl*

We are pleased to announce that the Board of Directors of the National Fish and Wildlife Foundation with NOAA has approved \$76,250.00 for the Scheeff East Point Preserve Shoreline Stabilization through Scheeff East Point Restoration (OH) project, pending successful completion of our programmatic and fiscal review process. This award is provided on the condition that these funds will be matched by \$76,250.00 in matching contributions raised by Put-in-Bay Township Park District. Project activities initiated or costs incurred prior to the execution of a Grant Agreement are done at the applicant's own risk.

These funds were part of \$37 million in new grants from the National Coastal Resilience Fund (NCRF) that will support coastal resilience projects in 25 states and U.S. territories. The 46 grants announced today will generate \$55 million in matching contributions for a total conservation

impact of \$92 million.

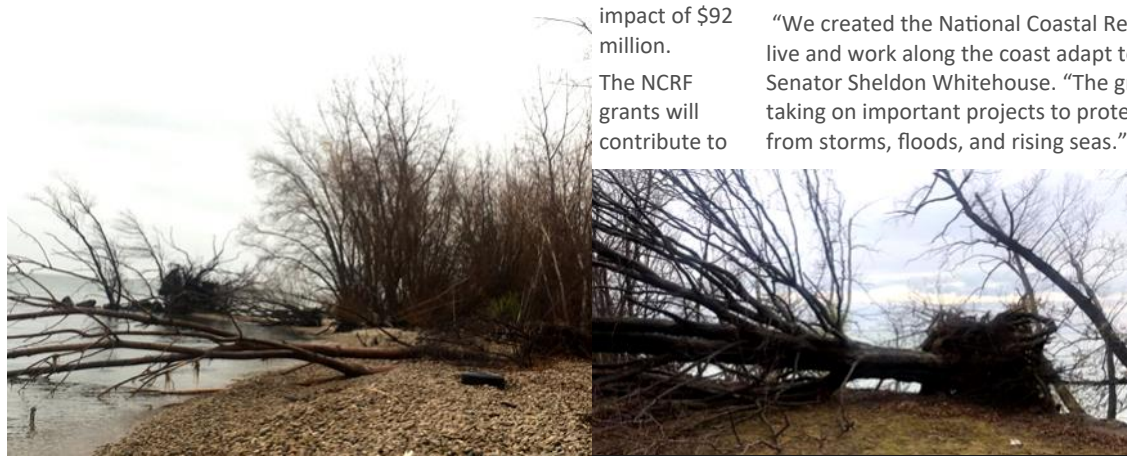
The NCRF grants will contribute to

the restoration or enhancement of natural features such as coastal marshes and wetlands, dune and beach systems, oyster and coral reefs, mangroves, forests, coastal rivers and barrier islands. These natural buffers can help reduce the impacts of storms, rising sea levels and other extreme events on nearby communities and habitats.

Congress authorized funding under the National Oceans and Coastal Security Act, allowing grants to be awarded through the NCRF, a partnership among NFWF, NOAA, Shell Oil Company, TransRe, the U.S. Environmental Protection Agency (EPA) and AT&T, with additional funding support this year from the U.S. Department of Defense (DoD). This year marks the first year of participation from EPA, AT&T and DoD, a significant achievement as the NCRF continues to expand its ability to support resilience projects across the United States.

"We created the National Coastal Resilience Fund to help Americans who live and work along the coast adapt to the changing climate," said U.S. Senator Sheldon Whitehouse. "The grant recipients in this latest round are taking on important projects to protect our coastal economy and way of life from storms, floods, and rising seas."

We are excited to be awarded this grant for our Scheeff East Point Preserve from NOAA and from the NFWF! We have watched as trees have fallen in with the high water. The restoration and protection of this project with natural materials and wetlands will be enjoyed by all that come to visit and stand as an example of natural shoreline protection.



Photos: Photo Erosion at the Scheeff East Point Preserve; Photo Erosion at the Middle Bass Island East Point Preserve

National Park Service Open House



Photo: View of Perry's Monument from East beach of Gibraltar Island

The National Park Service (NPS) announces the availability of the Environmental Assessment (EA) for the proposed Restore North and South Seawalls at Perry's Victory to Safeguard Site Project for public and regulatory review. The harsh marine environment has deteriorated and undermined the two seawalls resulting in unsafe conditions in the Park. The seawalls are necessary to protect the cultural resources of the Park due to the proximity of the Memorial to the shorelines of Lake Erie and the relatively low elevation of the Park.

The EA has been prepared in compliance with the National Environmental Policy Act (NEPA) of 1969, as amended (42 USC 4321 et seq.) and evaluates the potential impacts of the Proposed Action and the No Action Alternative. The Proposed Action would restore and extend the seawalls, improve stormwater management, protect cultural resources, and enhance the visitor experience at the Park.

Additionally, the EA identifies and considers the potential effects of the Proposed Action on historic properties, as required under Section 106 of the

National Historic Preservation Act (36 CFR 800). NPS has one historic property—the Perry's Victory and International Peace Memorial—within the 25-acre Park. The historic property has three resources and six historic viewsheds, all of which contribute to the historic property. NPS has determined the Proposed Action will have No Adverse Effects on the historic property.

The NPS will be hosting a virtual open house on December 17, 2020 from 10:00-11:00am to provide the opportunity for the public to learn more about the proposed project and the EA, provide input on historic properties of the Memorial, ask questions, and share comments. The open house will be held virtually via Microsoft Teams. A presentation will be held at the beginning of the meeting. Due to COVID-19 safety precautions an in-person meeting is not planned at this time.

Link to the Public Open House:

https://teams.microsoft.com/l/meetup-join/19%3ameeting_ZillOTgwZDatZTAyYS000TgyLTKxNDUtOTE4Mjc3YTl2YzRj%40thread.v2/0?context=%7b%22id%22%3a%2237247798-f42c-42fd-8a37-d49c7128d36b%22%2c%22oid%22%3a%22e0f8c7d9-02d4-4078-83d4-7c7f9a53be47%22%7d

Call in Number to Public Open House:

+1 469-214-8538,,204026749#

Phone Conference ID: 204 026 749#

The EA will be available for public review and comment for a period of 30 days from November 30, 2020 to December 31, 2020. Hardcopies of the EA will be available at the PEVI visitor center and the Erie Islands Library.

Please go to <https://parkplanning.nps.gov/projectHome.cfm?projectId=62176> to view the EA and comment electronically. You are also welcome to mail comment directly to:

Office of the Superintendent
Barbara Rowles
P.O. Box 549
Put-in-Bay, Ohio 43456

PLEASE TAKE TIME TO REVIEW AND COMMENT AS THE ADJACENT VILLAGE BATHING BEACH IS AN IMPORTANT COMMUNITY RESOURCE.

Donations to the Conservancy!



The Cooper Family Bench at Massie Cliffside Preserve
Amy Cooper of the Cooper family of Put-in-Bay Rd. worked with the Lake Erie Islands Conservancy to donate a bench at the Massie Cliffside Preserve this fall.

CRL David Foundation Donation

The LEIC is excited to announce they received a \$7,500 grant from the CLR David foundation in Sandusky. We are grateful to the foundation for their generosity and support.

Pollinator Book

The Lake Erie Islands Conservancy donated this book for the Put-in-Bay StoryWalk® at the Dodge Woods Preserve for use next fall. Paula Ziebarth found the book on pollinators and we think the children will BUZZ with excitement when they walk down the trail reading this one!



New WHERE THE BIRDS ARE Sign Donation

New sign for the Middle Bass Island Forested Wetland Preserve donated by Jim and Betsy Brohl in honor of grandkid Matija Brohl. Marc Wright is designing another on Changing Island Forests in honor of Luka Brohl, one on Trilliums donated by Jeff and Kendra Koehler, and one on Caves donated by Dustin Heineman.

Holiday Bazaar 2020

By Lisa Brohl

The Holiday Bazaar held in October at the Goat by the LEINWC and LEIC was a big success. Ten vendors joined the non profits in selling their wares on a beautiful fall weekend to visitors and residents while enjoying the beverages and sandwiches of the Bier Garden. The Conservancy sold \$500 worth of calendars, t-shirts, jelly, and more! Thanks to organizers Sarah Cochran and Renee Fultz and Lisa Brohl and all who bought a table or shopped!

Most of the LEIC items are still available! Reach out to Lisa Brohl at Lisa at 419-366-2087 or leiconservancy@gmail.com if interested.

Photos: Clockwise from Upper Right—Jessica Reidner and Dallas Mohn bought LEIC anniversary tote bag; Renee Fultz at LEINWC table; Bob Reynolds and son Jeff; Dave and Linda Bugoci buy new calendars; Susan Byrnes sells Quarantine booklet; Kerri Burris, Sue Seaburg, and Vicki Roggenbeck man table; Stephanie and Tom Thanasiu—Both Stephanie and Tom helped pack up and became LEIC members!



Fiercely Fighting Invasives

By Lisa Brohl

PIBTPD employee Patrick Green girdled this invasive Tree of Heaven (*Ailanthus altissima*) in Cooper's Woods Preserve for us and treated with herbicide to kill not only the tree but all the sprouts from it by doing in late fall when trees are drawing resources to the roots. The tree of heaven was a widely planted ornamental but is invasive and is the host plant for the invasive lanternfly. PLEASE remember to choose native whenever you can with your landscaping!!



Photos: Left—Invasive Tree of Heaven girdled by PIBTPD employee Patrick Green Right—Very prolific Tree of Heaven seeds Inset—Photo from article "Tree of Heaven vs. Sumac: How can you tell the difference?" by Thomas deHaas and Ann Chanon <https://bygl.osu.edu/index.php/node/1346>

Freshwater Sensations

Christine Ontko
Bed and Breakfast
PO Box 307
419-366-1036
www.freshwatersensations.com



Welcome to The Boardwalk!
341 Bayview Ave
Put-in-Bay, OH 43456
419-285-3695

www.OhioVacationLand.com
440-315-6000
Howard Hanna
Real Estate Services
Lee Hisey
Lake Erie Islands

Winter is nigh and so is our last event of the year! *See page 24 for additional details

Annual Audubon Christmas Bird Count—Sunday, December 20

The **Annual Audubon Christmas Bird Count** will be held in the Lake Erie Islands Count Circle on Sunday, **December 20, 2020**. Participants will be needed on Kelleys, Pelee, and the Bass Islands that day. On South Bass, we need volunteers to listen for owls in the early morning, travel the island bird watching during the day, and to watch their feeders at home. We are also looking for birders or feeder watchers to help with Middle Bass and North Bass.

If you are interested in watching your feeders or traveling the island for all or part of the day, call Lisa Brohl at (419) 366-2087 or e-mail at leiconservancy@gmail.com.

Contact Teddi Keith Morris(614-373-7533) or 419-285-0042 to participate on Middle Bass.

John Pogacnik, the official Count Circle Compiler, will be coordinating the efforts on Kelleys Island. Please correspond with him at jpogacnik@hotmail.com or with Tom Bartlett at hthomas.bartlett@gmail.com if you wish to help at Kelleys.

Participation in the Christmas Bird Count is free and a lot of fun! The data gathered over 100 years of the count show important trends in bird populations.

No Annual Christmas Holiday Potluck This Year

This year there will be no Christmas Potluck due to Covid-19. We do encourage all of you though, to go out and walk a preserve this December to commemorate our 20th year of land preservation. Be sure

to send us photos of your explorations. What better way to celebrate until we can enjoy festivities together again!

** And your photo just might make it into the 2022 LEIC Calendar!

Invasive Plant Work at our Preserves *By Lisa Brohl*

EnviroScience was on the islands this fall to rid our preserves of some invasive nonnative plants. At the Middle Bass Island East Point Preserve, Brendan Morgan used herbicide on amur honeysuckle (*Lonicera maackii*). This tree is the last tree you see green in the woods and first to green up in the spring—outcompeting all other trees in the understory. It was a common wildlife planting in the 70's which is now creating problems everywhere.

He also worked on the common reed grass (*Phragmites australis*) at the Lawrence Evans Tract and the adjacent Kuehnle State Wildlife Area and Middle Bass Airport. It will only return if not gotten removed from adjacent parcels also.

In November, Brendan Morgan and Jack Harper from EnviroScience were on South Bass Island to remove invasive amur honeysuckle from our newly acquired Benjamin Woods Preserve and the Cooper's Woods Preserve as well as to spray the tree of heaven at the new Dodge Woods Addition. They also taught local volunteers Talii, Lyla, and Doug Steidl, Elora Hubner, and Cole Porsche how to make piles attractive to wildlife with the removal.

EnviroScience will be back in the spring to finish their work for us at both islands. The Conservation Fund and the Put-in-Bay Township Park District paid for the environmental restoration efforts.



Photos: Doug Steidl, Cole Porsche, Talii Steidl, Brendan Morgan, Elora Hubner, Lyla Steidl, Jack Harper from EnviroScience; Brendan Morgan of EnviroScience at the MBI East Point Preserve



A Special THANKS... (We had so many helping we had to add a section—again!!)



Linda and Joe Shull folding the boxholders for LEIC membership drive this fall.



Ken Farber delivering native plants for Lake Erie Islands Nature and Wildlife Center Wildlife Window.

Put-in-Bay, Ohio
Celebrate Island Style
PUT-IN-BAY CHAMBER
419-285-2832 • VISITPUTINBAY.COM

Heineman's
OHIO'S OLDEST FAMILY OWNED AND OPERATED WINERY SINCE 1889
978 Catawba Ave.
Put-in-Bay, OH
419-285-2811
Visit the Winery, get a snack and try a few wines at the Wine Garden, tour Crystal Cave, or even do all three. We promise you'll have fun!
www.heinemanswinery.com

Miller
BOAT LINE
Ferries to Put-in-Bay & Middle Bass Island
800-500-2421
MillerFerry.com

A Special THANKS...



Thanks to Jackie Wertenbach of the Put-in-Bay Township for doing our late season mowing for wildlife habitat at the

Scheeff East Point Preserve. This photo by Susan Ferguson shows folks enjoying the preserve over Thanksgiving weekend!



As the seasons have changed and the air drifts cooler, Talii and Doug Steidl have been steadily working at mulching the Jane Coates Wildflower Trail. It is a ton of work, literally, as you can see by the photos above. Thank you gentleman!!



Theodora Keith-Morris, Bob Staumire for fixing the preserve fenced entrance at

the Middle Bass Island East Point Preserve. Someone recently broke the top portion so that the gate was unlocked so they could ride their four-wheelers inside. A police report was filed. Please obey preserve rule signs. Shown here Theodora and Lisa Brohl with new fence pieces.



Talii Steidl folding and mailing the fall newsletters.



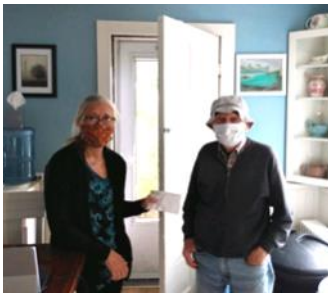
Joe and Mike Byrnes helped with downed trees at the Massie Cliffside Preserve.



Brianna Gorby, Trevor Wadding, and Sue Ferguson pick up beach at Scheeff East Point Preserve after low water event.



Thanks David Scherf for getting up the baffle underneath the wood duck box at the Middle Bass Island Forested Wetland Preserve.



LEIC member Bob Reynolds donates milkweed seed to Lisa Brohl for our planting efforts. Carmen Trisler also donated a bag full to be shared with our partners.



Thanks Del Taylor for the late season mowing at Middle Bass Island East Point Preserve. Shown here is Chris Helman who continues to help out at the preserve and Russ Brohl.



Burns Pierce took down several trees over the trail at the Scheeff East Point Preserve and the Cooper's Woods Preserve.



Julene Market watching LEIC table at the Freshwater Remedies Sale. Thanks Christine Ontko for hosting us!

Thanks to DeeDee Duggan for the sale at the Butterfly House in November -LEIC was able to sell our gear on the porch! Shown here employee Dawn Schill shopping.



Brian Beal was picking up garbage at our MBI East Point Preserve!



Thank you Theodora Keith-Morris for taking care of the new bulletin board at the Middle Bass Island East Point Preserve and being our eyes as trail monitor at the preserve.



419-285-GOAT(4628)

Catawba Avenue

Erie Island Carts.com

At the Airport ~ Overnight rentals

and Reservations welcome

419-285-KART



Yardworks

PO Box 538

Dan and Valerie Kowalski Put-In-Bay, Oh 43456
Owners (419-) 285-2147

New and Renewing Members

Friends

Donna Althouse
Paula and Tom Bartlett
Jeanne Burgess
Barb Chrysler
David Darr
DeeDee Duggan
James French
Janet Granham
Jessie Greene
Susan Harrington
Gloria Kindt
Tim and Jeanette Luecke
Scott and Leslie Pickup
Marcia Schultz
Pam Stephens
Randi and Jack Wertenbach
Paula Ziebarth

Supporters

Janet Ericksen
Barb Hunter
Angie Martens
Linda and Rudy Rence
Mary and Ken Schilstra
Loretta Smith
Tom Thanasu

Contributors

Leah Bilski
Todd Blumensaadt
Candace Carr
Charles and Betty Finkbeiner
Terence and Lynda Heaton
Dennis Uszak

Patrons

Stan and Connie Wulkowicz

Business Membership with Ad

Jet Express
Penny Plus Shop-Mark Nemeč
Put-in-Bay Electric-Scott and Kim Pugh
Put-in-Bay Gazette-Kendra and Jeff Koehler

2021 Calendar Sponsors

Northern Exposure Investments-
Suzanne and Joe Kostura
The Boardwalk-Eric Booker

Howard Hanna-Lee Hisey
Arbor Inn B and B-Susan and Mike Byrnes
Farber Specialty Vehicles-Ken and Jennifer Farber
Mossbacks Island Bar and Grill
Margaritas on the Rocks-Maria and Mijo Hristovski
Miller Boat Line-Julene Market
Conservation Realty Group LLC -Neal Hess
Heineman's Winery-Ed and Dustin Heineman
Perry's Cave Family Fun Center -DeeDee Duggan

Donations/Grants

Barb Hunter Bruce Miles
Joe Rutter-monthly
Ruth Scarpelli
Network for Good-Facebook
CRL David Foundation-Lynda David
Vanguard Charitable Grant from the Theodore M Ofat Heritage Fund (Recommended by Kalen Ely Cap and Theodore Michael Ofat)

Reel Bar
Northern Exposure Investments-
Suzanne and Joe Kostura
Scott Sneller, Dawn Schill, Alan Clink, Sue Latham donations with bird seed and other sales
Shannon McDonald-Matching Employee Contributions-Cigna
Cheryl Beal-Matching Employee Contributions-One Digital
Chris Ambrecht-In honor of Lisa Brohl's Birthday

Donations in Memory of Ray Traverso

Lisa and Russ Brohl

Land Protection Fund

James H. French
Jean and Bob Hilt
Carol and Kurt Miske
Scott and Leslie Pickup
Linda and Rudy Rence

Life Members

John Baker
Marv and Pat Booker
Jon D. Brausch
Jim and Betsy Brohl
Russ & Lisa Brohl
Linda and Dave Bugoci
Valerie Chornyak
David and Jacquelyn Clark
Alan & Stacey Clink
Gary and Carol Coates
Ken and Jennifer Farber
Frederick Fether
Christian L. Geiss
Richard Gump
Scott Jackson
Judy and Joseph Janicki
Karen A. Jennings
John & Paula Ladd
Georgia MacVean
Julene Market
Elaine and Howard Martens
Mary Ann McCann

Mary and Ken Schilstra
Anonymous Donor for Benjamin Parcel

Giving Tuesday Donors-Land Protection Fund

Cheryl Beal
Helen Brohl
Jennifer Buttrey Blumensaadt
Susan Byrnes
June Campbell
Kalen Cap
Mary Jo Cartledge-Hayes
Sharon Gray
Robin Greene
John Hageman
Amy Piper Harrison
Karla and Neal Hess and family
Maria Hristovski
Peter Huston
Suzanne Kostura
Bob Krause
Amy Kutschbach
Tina Kutschbach
Linda Erne Mahoney
Mary Ann Meyers

Michael McIntyre and Elizabeth Heineman
Valerie Mettler
Greg Millat
Mark Nemeč
Roger & Mary Parker
Mary Ann and Rich Plewacki
Hank & Gayle Polcyn
Carol Richardson
Richard and Carol Roberts
Fritz and Pam Rudolph Fund of the Toledo Community Foundation
Mary L. Staley
Kristin Stanford
Matt Thomas
Carley Tobias
Yardworks-Valerie and Dan Kowalski
Zoe and Brad Titchener

 **NEW Life Members:**
Mary and Tom Katzenmeyer
Chris and Kathy North

Michelle Pennington
Diane Nemeč
Rose Reising
Joe Rutter
Ben Sylak
Doraine Toms
Janice Williams



Don't forget!
Become an annual sponsor of our newsletter for \$100. Place an ad in our newsletter and receive an annual Friend Membership FREE!
Call 419-366-2087

THANK YOU!

Background Photo: Ovenbird from 2020 Banding

The Put-in-Bay
Gazette
Ohio's Oldest Island Newspaper
(419) 285-3645

Shop the Resale
Downtown Put-in-Bay
Behind LEIHS Museum
419-341-2725

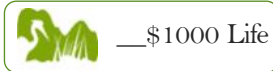
Jet Express
Excursion Adventures
Cruising Lake Erie & Beyond
Visit jet-express.com for more details

LEIC Membership Form*

Membership Notices are sent out annually-
this is for new memberships-share with your friends

___\$25 Friend ___\$50 Supporter ___\$100 Contributor

___\$100 Friend/AD ___\$250 Steward ___\$500 Patron



___\$1000 Life

Name _____

Spouse/Companion _____

Island Address PO Box _____ Put-In-Bay, Ohio 43456

E-mail _____

Permanent Address _____

City _____ State _____ Zip _____

Phone # _____ Cell # _____

Island # _____

In addition to my membership, I would like to donate to:

Land Protection Fund

I would like to contribute \$ _____ to the Lake Erie Islands Conservancy, to be used only for expenses related to the purchase of land.

I understand that I will receive a *Certificate of Donation* for income tax purposes.

Stewardship Fund

I would like to donate \$ _____ to the Stewardship Fund to help maintain those properties owned by the Lake Erie Islands Conservancy.

Please make checks payable to (LEIC) Lake Erie Islands Conservancy

Please Send to: PO Box 461, Put-in-Bay, Ohio 43456

All donations are tax deductible.

Thank You!

*To join LEIC online, please go to

<https://lakeerieislandsconservancy.org/membership/>



IN MEMORIAM

Maribeth Watson

Maribeth Evans Watson, of Hilliard, Ohio, passed away June 15, 2019. Maribeth donated a lot on Middle Bass Island to our PIBTPD which is now a part of our MBI Forested Wetland Preserve. We appreciate Maribeth's thoughtful donation and send our sympathies to her family.



Raymond "Ray" Traverso



LEIC Member and life time Put-in-Bay resident Ray Traverso passed away on September 27, 2020. We had missed seeing Ray out and about in his truck as he had been at the Edgewood Nursing Home more recently. Memorial contributions made will go to the Lake Erie Islands Conservancy, Mother of Sorrows Catholic Church, and the Humane Society of Ottawa County.

Giving Tuesday Donations 2020 By Lisa Brohl

Lake Erie Islands Conservancy celebrated Giving Tuesday, December 1, 2020.

Donations received made the Lake Erie Islands Conservancy eligible for a chance in a drawing for \$5,000 from the Toledo Community Foundation and eligible for matching funds from Facebook by participating in [#GIVINGTUESDAYNWO](#).

Any check sent to us dated December 1, 2020 or any amount donated via PayPal at www.lakeerieislandsconservancy.org or through our Facebook account on that date qualified us for the drawing. Most

donations were earmarked for stewardship or land protection.

We are sending out a huge THANK YOU to the nearly 30 supporters (see pg, 22) who donated for Giving Tuesday this year!!

If you missed Giving Tuesday but would still like to donate, there are Clean Ohio funds available in March for our district—we are always in need of matching funds to preserve island forests and you can always use any of the methods mentioned here to donate any time of the year.

Middle Bass Music Fest 2021!

Saturday
July 17, 2021



With the support of

**MIDDLE BASS
DOCK COMPANY**

Lake Erie
Shores & Islands

Ohio Arts
COUNCIL

Arts & Crafts Doms

- WATERCOLOR • RUG HOOKING
- FLOWER ARRANGING

Food and Drink

AND MUSIC!

PO Box 461
Put-In-Bay, Ohio 43456
Phone: 419-366-2087
E-Mail: leiconservancy@gmail.com

PLACE
STAMP
HERE

We're on the Web!
www.lakeerieislandsconservancy.org

Save paper-time-and money!
Have your newsletter emailed to you!
Email: jd4mb2011@gmail.com

Board of Directors

Chairperson

Lisa Brohl

Secretary/Treasurer

Kelly Faris

Board Members

Dave Bugoci - Susan Byrnes
Marsha Collett - Ken Farber
Dustin Heineman - John Ladd
Peggy Leopold - Bruce Miles
Linda Shull - Kristin Stanford
Paula Ziebarth

Advisory Council

Carol Richardson - Richard Gump
John Dodge - Julene Market
Bob Russell - Nancy Welter

Newsletter Editors

Lisa Brohl
Michelle Pennington

Stay active and get some much needed fresh air with LEIC events—keep checking our website and Facebook pages for more info!



April 23, 2021 for Arbor Day

August 7, 2021 for Middle Bass Poker Kayak Day

August 7-14, 2021 for Island Green Week



A HUGE Thanks to Bostwick-Braun for printing assistance!!



Important Announcement

****All LEIC associated Events scheduled for the coming months could potentially be cancelled due to the current COVID-19 global pandemic. Please watch Facebook or the LEIC Website (<https://lakeerieislandsconservancy.org/>) for updates.**

Please Note: While we are hoping you and your family are taking appropriate measures to stay safe as we all navigate this challenging time, please remember that the Island Preserves (<https://lakeerieislandsconservancy.org/maps-of-the-lake-erie-islands/>) are all open and a wonderful place for you to get out and get some fresh air and exercise with your family. (Please remember: If you're taking your pets with you, make sure to follow posted rules—on leash, use provided doggie bags, etc.)

Please maintain a recommended distance of 6 feet from other preserve visitors while on the trails and do not congregate as a group in the parking areas. Also, please refrain from touching benches or brochure boxes with your hands unless using sanitizer.