

ISLAND

Lake Erie Islands
Conservancy
Presents



GREEN SCENE

Lake Erie Islands Conservancy Quarterly Newsletter

Spring 2022

Rusty Patched Bumble Bee Habitat Project

By Lisa Brohl



Photos: Kelleys Island Pollinator Partnership fields

share. Several island land owners are investigating having a pollinator plot on their lands. The Lake Erie Islands Conservancy has funds available to pay for the planting preparation and seed or plug costs for a pollinator project on private or local government owned properties. Contact Lisa Brohl if interested in this program. Other committee members include Jody Frimel and Kate Parsons from Ohio Division of Wildlife, Kristin Stanford from OSU Stone Lab, and Renee Fultz of the LEINWC.



The committee set up to oversee the funds for the Rusty patched Bumble Bee pollinator habitat met in February to discuss possible project sites. A sample land owner agreement was provided by program manager Jeff Finn with the Ottawa National Wildlife Refuge. A treatment and planting schedule was provided by Chris Ashley at the Kelleys Island State Park. Jackie Taylor of the Kelleys Island Field Station has provided photos of the finished projects to

Our Mission:

To encourage conservation and Protection of Natural and Agricultural Lands in the Lake Erie Islands for the Benefit of Future Generations.



FUTURE GENERATIONS

Speaking of Future Generations....
Curious kids adventuring at
Environmental Adventure Camp 2 at a
Kelleys Island Pollinator Partnership
Field! Photo by Jackie Taylor

In This Issue:

Biodiversity and Native Plants	2
Earth Week Checklist	5
Garlic Mustard Challenge	5
LEIC Annual Financial Report	8
Native Plant/Tree Sale—Order Now!	9-10
Upcoming Events:	
Middle Bass Poker Kayak Day	7
Spring Bird Banding Schedule	6
Back to the Wild	10
Middle Bass Music Festival	14
Arbor Day	15
Island Wide Garage Sale	15
Save the Dates	20

Morrison Woods Closing *By Lisa Brohl*

We celebrated on Friday February 25, 2022 the purchase by our partners the Put-in-Bay Township Park District of what will be the Ed and Mary Morrison Woods Preserve at the corner of Meechen and Put-in-Bay Rd. on South Bass Island. It was purchased with a Clean Ohio Conservation Fund grant as well as funds from the Mary Morrison Trust donated to the Conservancy. Thanks to the Morrison daughters—Margaret Morrison and Pat Marida, the property

(Continued on page 8)



Photo: On site closing day—Marsha Collett-LEIC Board, Renee Fultz-LEINWC Director, Dustin Heineman, Julene Market and Lisa Brohl of the LEIC

Biodiversity and Native Plants *By LEIC Board Member Peggy Leopold*

Today, we have access to goods from around the world. We can buy products from across the world because the import and export of goods. This is progress in our day-to-day life. One aspect that has had a negative impact is our biodiversity.

Biodiversity comes from two words "biological" and "diversity". Bio meaning life and diversity meaning variation. Together, it refers to **all the variety of life that can be found on Earth** which includes all plants, animals, fungi and micro-organisms as well as to the communities that they form and the habitats in which they live. Biodiversity is a critical component of the health of our local ecosystems. When biodiversity is low, ecosystems are susceptible to disease, drought, fire, etc.

So how has commerce negatively impacted biodiversity? Native plant sales in the US account for only 13% of total US plant sales. Why? Availability, non-native plants are more readily available for produce because of the import and export of good including plants. Non-native plants are often more exotic and therefore a consumer preference. Non-native plants are cheaper at the big box store and have promotions for these plants. Added to the lack of consumer knowledge about what native vs non-native plants. Unfortunately, the lack of native plants is threatening the extinction of many plants and animals. The spread of invasive plants is linked to the decline of biodiversity.

How can you help? Verify the plant. The first and easiest is looking at the plant tag for the correct Zone, (Put-in-Bay is in zone 6b). Look to see if the plants are pollinator friendly, were they grown with pesticides, encourage the use of natives. Oak trees are one of the most biodiverse trees available. Other good choices include native cherry and willow trees, crabapples, viburnum, chokeberry, maple, pine, Virginia creeper, and even poison ivy. There are so many more plants that that meets the criteria of biodiversity. Check out the plants LEIC offers every spring or learn about the plants you purchase and introduce more plants that offer the variety of life to our island.



Photos: Above Left—Even native poison ivy is important winter food for woodpeckers Photo by Elizabeth Heineman; Above Right—Brand new April is National Native Plant Month Logo! Bottom—Books to help you plant native and increase biodiversity

LEIC Says!! The plants and trees offered by LEIC are grown in Ohio from Ohio seed so are as native as we can get!! We have a few that are from island seed. And supporting local!! <https://www.nationalnativeplantmonth.org/>

Newest LEIC Board Member!

Our newest LEIC Board Member, Colleen Kerkay, shared the following:

I am a seasonal resident of Middle Bass where I'm also on the Lake Erie Utilities (LEU) Board. About a year ago, my company, RQM+, shut down the Cleveland office and put me on a permanent remote status, which allows me to work from my home on Middle Bass. I winter in Olmsted Township. I'm a program manager in the medical device industry. Right now I'm on a long-term contract with Boston Scientific working with cryoablation systems. Prior to getting into project management, I received my bachelor's degree in Mechanical Engineering from Northwestern and my master's from University of Colorado. I worked as a mechanical engineer for many, many years, mostly with medical device companies. I have two sons in college – one is at Miami of Ohio and the other is at Penn State.



Photo: New Board Member Colleen Kerkay

Thank you Linda Shull!

We are grateful to Linda Shull for the time she has spent on the board of the Conservancy. She now will be serving on our advisory board and still helping with membership and volunteering—hopefully having more time to spend with her retired husband and grandchildren!

AND
OF
COURSE



Photo: Linda Shull working on past project

Cooper's Woods Preserve Conservation Easement Monitoring *By Lisa Brohl*

When the Lake Erie Islands Conservancy donated the Cooper's Woods Preserve to the Put-in-Bay Township Park District, a conservation easement was placed on the Preserve to be held by the Conservancy. A conservation easement is a voluntary, legal agreement between a landowner and a land trust or government agency that permanently limits uses of the land in order to protect its conservation values. The limits of the conservation easement 'runs with the land,' meaning that even if the land is inherited or sold the restrictions stay in place.

A conservation easement in place will ensure that the Cooper's Woods Preserve stays in its present wooded state for the future. The conservation easement will be monitored annually by the Conservancy to make sure the management of the preserve stays true to the intent of preserving the forest with caves that everyone in this community values highly.

The first easement monitoring was accomplished in December 2021 by the team of Susan Byrnes and Elizabeth Heineman. Base line photos were taken at certain points that will be taken again every year to monitor any changes in management on the preserve.

Thanks Susan and Elizabeth!



Photos: Canopy Shot Photo by Susan Byrnes

Central Ohio Owl Project *By Lisa Brohl*



Photo: Owls on December watch at dusk by Gay Pippert

I have had a lot of islanders give me information on owls after our Audubon Christmas Bird Count. If you want to turn in your owl sightings check out this Central Ohio Owl Project with Dr. Blake Mathys—they are looking for owl sightings throughout Ohio.

How to Participate

If you find an owl, please let us know!

These owls can show up **anywhere**, even in suburbs and parks; carefully check evergreen trees during the day for sleeping owls. Barn Owls can also be in garages, barns, silos, and other structures. (All reported owl locations

will be kept strictly confidential. Any publications will report sightings at the county or township level.) You may be eligible for a cash reward for your sightings!

Unlike most other bird species, owls are nocturnal, secretive, cryptic, and elusive, which means that the normal techniques for documenting birds will likely miss many of them. There are probably many people outside of the birding and scientific communities who are familiar with owls wintering in their area, perhaps in their barn or a stand of evergreen trees on their property. If those owls could be documented, it will help to fill in blank areas on the map of owl distribution. It will also encourage enthusiasm and excitement for this underappreciated group of birds. Northern Saw-whet Owl, Long-eared Owl, and Barn Owl are considered to be threatened or species of concern in Ohio, so having more information about their winter distribution can also help with their conservation but information is accepted on other species also.

Go to https://ohiodominican.formstack.com/forms/central_ohio_owl_project to turn in owl sightings or visit their website at <https://www.ohiodominican.edu/OwlProject>

LEIC Hiring for Advancement/Membership Position

The Lake Erie Islands Conservancy is looking to hire a part time Advancement/Membership Specialist. Located on the Bass Islands of Lake Erie, The Lake Erie Islands Conservancy encourages conservation and protection of natural and agricultural land in the island for the benefit of this and future generations. Our goal is to grow membership and increase donations to meet our mission and needs. The Advancement/Membership Specialist will work to provide better coordination of membership and outreach on Conservancy programs to the community to meet this goal.



Salary commensurate with experience. Access to office, computer, copier provided. We are looking for someone with proficiency in office, word press and social media forums to manage membership files, renewals, set up a data base, website updates, social media posts, as well as other administrative duties. For more details and a complete position description, contact Lisa Brohl at 419-366-2087.

Please send resume to Lake Erie Islands Conservancy, P. O. Box 461, Put-in-Bay, Ohio 43456 or by email at leiconservancy@gmail.com.



Become an LEIC Member for just \$25 for an entire year! Please see page 19 for details.

Lake Erie Islands Christmas Bird Count 2021 *By Lisa Brohl*



The Lake Erie Islands Count Circle of the Audubon Christmas Bird Count was held on December 19, 2021 with people participating on Middle Bass, South Bass, Kelleys and Pelee Island. This was the 122nd year for the annual Audubon Christmas Count making it one of the oldest citizen science efforts. Having years of data at the same time of year allows the tracking of trends in birds populations. And it is a lot of fun to participate! Nice to spend the day walking the island or watching birds at your feeder for a good cause. Thanks to all who helped out!

It was a relatively warm day again this year with open water around the islands. Duck hunters were present offshore at South Bass, Middle Bass and Kelleys Island which affected the count of waterfowl. The warmer weather made for a quieter count both in the woods and at feeders. Total for all four islands together was 73 species and 19,804 individual birds counted.



Here on South Bass Island, we counted 2,651 birds from dawn to dusk. Lisa Brohl, Bobbie Dunn, Bill Linden and Elizabeth Heineman drove and walked around the island to tally waterfowl and land birds. The most numerous birds again were waterfowl-with 481 red-breasted mergansers, followed by 430 bufflehead. Elizabeth Heineman found a belted kingfisher and great-blue heron at the pond. A nice surprise was a pocket of golden-crowned kinglets on East Point with Bobbie and Bill-a new bird for them. Lisa found five double-crested cormorants near Gibraltar. The great blue heron, belted kingfisher, and double-crested cormorants seem to be spending the winter feeding at small patches of open water under the bridge to the pond and at bubbler systems at docks.



Russ Brohl, Kit Knaser, Ruth Scarpelli, Michelle Heineman, Sarah Toole, Pam Stephens, Jean Hilt, Maryann and Anita McCann, Julene Market, Randi Wertenbach, Paul Ladd and Gay Pippert, Janet Grantham, Sue Ferguson, Walt Duff, and Jim O'Donnell each watched their feeders and yards that day to record the birds and woodpeckers who came to visit. Randi Wertenbach had over twenty mourning doves visit her feeder that day. Kit Knaser and Russ Brohl had a tufted titmouse each at their feeders and Elizabeth heard one near the pond. These are rare here on the islands.



Paul Ladd gave Lisa Brohl, Susan Byrnes and Julene Market a ride to Green Island in an outboard on December 21 to count birds there. We had received a special permit for access that week. A great horned owl was seen there as well as several duck pieces that the owl may have been enjoying. Again there were not many ducks as we saw a couple of duck boats while out.



Photos: From top—Anita McCann's dogs helping watch birds; Susan Byrnes, Lisa Brohl, Julene Market, and Paul Ladd on Green Island; Bobbie Dunn and Bill Linden watching at the Village Bathing Beach; Belted Kingfisher Photo by Elizabeth Heineman; Great Blue Heron Photo by Elizabeth Heineman

On Middle Bass, Brian McClain walked and drove the island with assistance from Teddi Keith Morris to tally a total of 886 birds with the most numerous birds being Red-breasted Mergansers at 125. Brian found a hairy woodpecker-rare for island counts-as well as the only common grackle recorded on the Bass Islands during the count. Brian also recorded large numbers of white-throated sparrows and some winter wrens.

Pelee Island got wild turkeys, ring-necked pheasants, horned larks, eastern bluebirds, and lots of mourning doves-thanks to all the field and forested habitat there. They found the only eastern phoebe and the only island with high numbers of American tree sparrows. Pelee's most numerous birds were the large rafts of scaup at 5,906 and had pintail, green winged teal, gadwall, ring-necked ducks, and swans-they did not

experience the duck hunting pressure of the other islands. Participating in this year's count were Paul Carter, Graeme Gibson, Brian Kipp, Lisa Kipp, Sumiko Onishi, Michelle Taylor, Vernon Taylor, Lynn Tiessen, Ron Tiessen, Rob Tymstra, and Bernie Van Donk.

The observers at Kelleys found a merlin, red-necked grebe, common loons, saw-whet owls, turkey vultures, and lots of white-throated sparrows. Other good finds were purple finches, count week red-winged blackbird, and Thayer's Gull. At Kelleys, the most numerous bird was the red-breasted mergansers followed by scaup and bufflehead with a single pintail and a few gadwall and ring-necked ducks too. There were not as high numbers of waterfowl with hunting pressure and open water everywhere-ducks had not been forced south yet. Participants were John Pogacnik, Alexi Panehal Tom and Paula Bartlett, Emily Beal, Kari Warner, and Chris Ashley.

Final results and species counts will be posted on the Lake Erie Islands Conservancy website at www.lakeerieislandsconservancy.org once approved by Lake Erie Island Count Circle coordinator John Pogacnik. Thanks to everyone for participating!

	Pelee	SB	MB	KI	Total
Canada Goose	120	130	40	159	449
Mute Swan	4			2	6
Trumpeter Swan	2				2
<i>Swan species?</i>	1				1
Gadwall	144			4	148
American Black Duck	8				8
Mallard	550	56	18	63	687
Northern Pintail	1			1	2
Green-Winged Teal	5				5
<i>Duck species?</i>	130				130
Ring-necked Duck	4				4
Greater Scaup	503	3		573	1079
Lesser Scaup	3	9	1	374	387
<i>Scaup species?</i>	5400	31		500	5931
Bufflehead	310	443	75	562	1390
Common Goldeneye	132	53	27	379	591
Hooded Merganser	1			2	3
Common Merganser			12		12
Red-breasted Merganser	657	481	125	1661	2924
<i>Diving duck species?</i>		37		250	287
Ring-necked Pheasant	4				4
Wild Turkey	240			1	241
Horned Grebe	19	4	5	54	82
Red-necked Grebe				1	1
Mourning Dove	135	33		5	173
Ring-billed Gull	70	39		370	479
Herring Gull	41	96	12	191	340
<i>"Great Lakes" Gull hybrid</i>				1	1
Great Black-backed Gull	1	1	1	4	7
<i>Gull species?</i>	40	12			52
Common Loon				4	4
Double-crested Cormorant	1	5			6
Great Blue Heron		1			1
Turkey Vulture				5	5
Bald Eagle	10	4	6	8	28
Sharp-shinned Hawk		4	1		5
Cooper's Hawk	3	1	1	6	11
Red-tailed Hawk	8	1	2	1	12
<i>Buteo species?</i>	1				1
Eastern Screech-Owl	2			9	11
Great Horned Owl	7	5		8	20
Northern Saw-whet Owl	1			3	4
Belted Kingfisher		1	1		2
Red-bellied Woodpecker	14	11	5	13	43
Yellow-bellied Sapsucker	3			2	5
Downy Woodpecker	47	45	11	29	132
Hairy Woodpecker			1		1
Northern Flicker	41	8	5	22	76
Merlin				1	1
Eastern Phoebe	1				1
Blue Jay	45	28	8	9	90
American Crow		9	1	131	141
Horned Lark	2				2
Black-capped Chickadee	32	78	6	137	253
Tufted Titmouse		3			3
Red-breasted Nuthatch		3		4	7
White-breasted Nuthatch	15	18	1	1	35
Brown Creeper	5	1	5	7	18
Winter Wren	2		3		5
Carolina Wren	14	4	2	5	25
Golden-crowned Kinglet		21	5	15	41
Ruby-crowned Kinglet				1	1
Eastern Bluebird	21			6	27
Hermit Thrush				37	37
American Robin	1	91	87	362	541
European Starling	42	232	250	349	873
Cedar Waxwing	9	3		205	217
House Sparrow	54	317	18	67	456
House Finch	40	98	35	84	257
Purple Finch				8	8
American Goldfinch	28	41	4	17	90
American Tree Sparrow	76			4	80
Song Sparrow	3		1		4
Swamp Sparrow	1				1
White-throated Sparrow	42	18	75	173	308
White-crowned Sparrow	1	1			2
Dark-eyed Junco	102	89	7	39	237
Common Grackle			1		1
Yellow-rumped Warbler				32	32
Northern Cardinal	29	81	28	78	216
Individuals	9228	2650	886	7039	19803
Species	55	42	37	54	73

Earth Week Checklist for April 17-23!

Earth Week Checklist

April 17-23, 2022



Initial this list and send picture of completed checklist to leinwc@gmail.com, prizes will be distributed at a later date. Help the Earth, one island at a time by taking part! Eligible for Panther Pride!

Send pictures by April 24 to leiconservancy@gmail.com or Lisa Brohl at 419-366-2087

_____ Clean Up—Meet at Scheeff East Point Preserve Thursday, April 21 at 4:00pm Environmental Club ([Missi Kowalski](#)) and National Honor Society ([Johnna Danes](#)) will be there to work on State Route 357. Ages 12-17 must have parent sign release. Bags, Gloves, Safety Items provided. Younger kids clean up at Scheeff. Adults may clean up at Scheeff or along roadside.

_____ Garlic Mustard walk/pull at Cooper's Woods Preserve, Earth Day, Friday April 22 @ 3:30pm with Andy Van Camp of National Park Service. Bags and gloves provided.

_____ Ride Bicycle or take a walk

_____ Pull 1 bag of Garlic Mustard

_____ Pick up 1 bag of garbage

_____ Pre-order from [LETC](#) Native Plant Sale (optional)



Garlic Mustard Challenge 2022—May 7, 2022 *By Lisa Brohl*



The City of Green near Akron, Ohio and the Portage Park District have issued the Put-in-Bay Township Park District a challenge as to which community can pull the most garlic mustard in a day! We have accepted the challenge but need your help and lots of volunteers. Last year we filled a dumpster with garlic mustard and were successful!! Over five hours, thirty-four PIB volunteers removed 1,845 pounds of garlic mustard from the woods! They pulled 56 lbs/

person with a figure of 24/lbs/per person/per hour. Lets see if we can top this year!

There is such a big problem with the invasive wildflower garlic mustard in

Cooper's Woods we need help! The best way to get rid of it is to hand pull it before it goes to seed. It pulls easily just after a spring rain!

Brendan Morgan of EnviroScience will be here Saturday May 7 from 9:00 am-2:00 pm at the Cooper's Woods parking lot to arm us with strong garbage bags. Come for whatever time you are available. Volunteers will head into the woods after an educational session on what garlic mustard looks like and how to pull it. We will fill our bags, take them back to the parking lot for weighing before dumping into a dumpster for removal so that seeds are removed from the site. After the bag is empty, grab some water and return to the woods to refill your bag. Southgate park in the city of Green is much larger at 200 acres but the density of garlic mustard is

(Continued on page 16)

The Put-in-Bay
Gazette
Ohio's Oldest Island Newspaper
(419) 285-3645

Shop the **Resale**
Downtown Put-in-Bay
Behind LEIHS Museum
419-341-2725

Jet Express
Excursion Adventures
Cruising Lake Erie & Beyond
Visit jet-express.com for more details

TIME LINE CORNER—Where we explore our past: DE RIVERA PARK



JOSE DE RIVERA ST. JURGO WAS NOT ONLY OUR FOUNDING FATHER BUT, ALSO OUR FIRST CONSERVATIONIST. JOSE PURCHASED 6 OF THE BASS ISLANDS IN 1854. THE FIRST ATTEMPT AT CONSERVATION STARTED ON 06/14/1866. JOSE DONATED LAND FOR PUBLIC LAWN OR OPEN SPACE ON SOUTH BASS ISLAND FOR THE PEOPLE TO ENJOY OUR BEAUTIFUL LAKE FRONT, WITH USAGE SPECIFICATIONS AND A PROHIBITION ON BUILDING OF ANY KIND. THROUGHOUT OUR PARK, THERE ARE MANY REMEMBRANCES OF OUR PAST. THE WAR CANONS, (TO PLAY ON AND POSE FOR PICTURES). A LONE WILLOW TREE PLANTED TO REMEMBER THE FALLEN OFFICERS WHO DIED DURING THE WAR OF 1812, IN THE BATTLE OF LAKE ERIE; REPLACED YEARS LATER WITH A PYRAMID OF CANON BALLS (I'VE SEEN MANY A PICTURES WITH PEOPLE POSING IN FRONT OF THEM OVER THE AGES.) THE STATUE OF THE UNKNOWN SOLDIER, IN MEMORY OF ALBERT SCHEIBLE (112TH ENGRS. U.S.A.) AND REX DOWNING (U.S. NAVAL RESERVE). THE VINTAGE CLOCK, WHICH IS WOUND WEEKLY BY CHRIS LADD. THE VINTAGE STREETLIGHTS WHICH DISPLAY FLAGS AND BEAUTIFUL FLOWER BASKETS BOTH DONATED BY THE GARDEN CLUB. THE FLAGPOLE PROUDLY FLYING THE AMERICAN FLAG DEDICATED TO NATE LADD. THE FANCY LIMESTONE FOUNTAIN IN THE CENTER OF THE PARK, (WHEN I WAS A KID THEY PUT GOLDFISH IN THERE AND ONCE IN A WHILE SOMEBODY WOULD PUT IN DETERGENT AND THINGS BUBBLED UP.) THE COMMODORE MEMORIAL TO HONOR THE PAST COMMODORES OF I-LYA. TODAY WE HAVE THE BATHHOUSE. BACK IN THE DAY IT HAD BATHROOMS WITH SHOWERS—IT ALSO HOUSED OUR CHAMBER OF COMMERCE OFFICE, (DID YOU KNOW THAT ELIZABETH KINDT CAME TO THE ISLAND TO RUN THE CHAMBER OFFICE, WHERE SHE MET HER HUSBAND TONY KINDT WHO WORKED AS MAINTENANCE FOR THE MONUMENT. THERE ARE TIMES WHEN THERE ARE 5 GENERATIONS OF THE KINDT FAMILY RUNNING AROUND PIB). ALSO THE DOLPHIN, THE SEAL, AND SWING SETS IN MEMORY OF BRADLEY HUGHES FUNDED BY BRADLEY'S FAMILY AND FRIENDS TEEING OFF AT THE BRADLEY J. HUGHES MEMORIAL OPEN. THERE'S WILL'S PLAYGROUND WHICH WAS FUNDED BY WILL BLUMENSAADT'S FAMILY AND FRIENDS, SWING SETS, PICNIC TABLES, BBQ GRILLS, AND BENCHES. SOME OF OUR NEWEST ADDITIONS IN THE PARK ARE THE CARVED TREE TRUNK OF JOSE DE RIVERA, THE AMERICAN LEGION MEMORIAL AND THE VERY COOL BRICK PATIO. WALKING AROUND THE PARK LATE FALL I DISCOVERED A LARGE PLAQUE FOR THE MEN WHO FOUGHT IN THE BATTLE OF LAKE ERIE, WAR OF 1812. THE PARK HAS BEEN BEAUTIFULLY LANDSCAPED WITH MANY TREES, (SOME PLANTED BY THE VILLAGE OF PUT-IN-BAY TREE COMMISSION), SHRUBS, AND FLOWERS ENJOYED BY ALL 2-FOOTED, 4-FOOTED AND WINGED CRITTERS. IN THE PAST FEW YEARS WE'VE BEEN BLESSED TO WITNESS WOOD DUCKS AND GREAT HORNED OWLS NESTING IN THE TREE HOLLOWES. WE WERE ALL LUCKY TO HAVE HAD JOSE DE RIVERA ST. JURGO LOOKING OUT FOR US. THE AREA THAT WAS DE RIVERA'S LAWN SERVES AS A TESTAMENT TO THE COMMUNITY'S CONTINUING BELIEF IN JOSE'S INSISTENCE ON LAND USE RESTRICTIONS. SO GO OUT AND ENJOY OUR PARK, THE VIEW, AND THE PEOPLE.



Elizabeth Heineman, LEIC Historian

Invasive Plants: Do Not Dump Your Lawn or Landscaping Clippings

By Lisa Brohl and Peggy Leopold

As island residents and cottage owners, time is often limited for yard chores. It is very important that you do not dispose of your lawn or landscaping leftovers in our preserves or wild areas.

Several invasive plants have been found on the islands that have started from someone not thinking about proper disposal of these items. Groundcovers that work great in your yard and around your home such as English Ivy, wintercreeper, or periwinkle can quickly take over a wooded setting and crowd out native wildflowers and vines. This is happening at the Middle Bass Island East Point Preserve, Jane Coates Wildflower Trail, and numerous areas around PIB. We have found two populations of the attractive nonnative yellow flower Greater Celandine. Unfortunately, it spreads like crazy in woodland areas and will decimate native wildflower populations. Please be mindful of soil you bring from an off-island source as it can contain invasives like Celandine-something we do not need on the islands.

Our isolation can work for us as we have yet to have a large presence of invasive loosestrife here. Persistent and quick removal of it from our wetlands have kept it at bay. Bradford (Callery) pear cuttings or branches (or fruits-although it is supposed to be sterile) can take over and crowd out native tree species that offer pollinator and other wildlife resources-this is



happening at the Scheeff East Point Preserve. It also leeches nutrients needed by native species.

People are dumping their end of the year landscaping plants-still in the pots in the Kuehnle State Wildlife Area or Petersen Woods Preserve. There was a long history of using this area as a dump in the in the early 1900's, long before invasives became a problem. Apparently, this bad habit persists today. A car tire was recently found while removing the invasive

European Frogbit. It has now sprung up in the same spots that yard waste was dumped. Frogbit and Hydrocotyle are used in small garden ponds and have been found in Petersen Woods. Please either compost things on your own lot or dispose of them with your garbage as it can wreak havoc with our natural areas at a time when they are crucial to the survival of wildlife and pollinators. We try to keep yard waste out of our garbage, but random disposal of invasives doesn't help the environment either. Remove these invasive species before composting.

If you are a neighbor to one of our preserves, be very careful on how you dispose of yard waste. Pick native plants whenever possible for your landscaping. Our native plant sale offers varieties that will attract butterflies, pollinators, and other wildlife either to the flower or fruits or as

(Continued on page 13)

Arbor Inn B&B
A Quiet Couples Retreat
419-285-2306
www.arborinnpi.com



Gump Builders Inc.
419-285-5151

Septic Systems-Foundations-Excavations

RESIDENTIAL COMMERCIAL
NORTHERN EXPOSURE
INVESTMENTS
Joe Kostura
(419) 341-2366 or (419) 285-3106

BUILDING SEAWALLS
ROOFING CONCRETE
ADDITIONS PATIOS
REMODELING DRIVEWAYS
PUMPING FOUNDATIONS
PAINTING STONEWORK
SKYTRAK LIFT FOR RENT
BOBCAT & EXCAVATOR SERVICES



7th Middle Bass Island Poker Kayak Day!

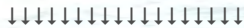


Sat., August 6, 2022
12 p.m.– 4 p.m.

(Rain Date Sunday, Aug. 7th)

To BENEFIT signage for the MBI preserves!
(part of Put-in-Bay Township Park District)

To HIGHLIGHT the coastal MBI preserves
and the MBI State Park!



Kayakers start and finish at the Middle Bass Island State Park west beach. The paddle around the island includes three additional stops (the State Park Marina, the MBI East Point Preserve, and the Kuehne State Wildlife Area/Petersen Woods Preserve). A welcome packet at the start has a description of the course and information about the stops. Stops are staffed with volunteers for safety and to distribute poker cards and snacks. The finish has a cook-out with hot-dogs, chips, and bottle of water while 1st, 2nd, and 3rd place winners are determined.

Start no later than 1:00 P.M., depending upon your kayaking leisureliness! (Well, there IS a finish time limit.)

◆ *(Direction and sequence of stops subject to change due to lake and weather conditions.)*

◆ Feel free to get out and walk around at any of the stops!

Because of people's different schedules and kayaking abilities, one need not be present to win! (We'll tell you!)

- ◇ 1st prize: Round trip ferry boat tickets for 2 adults and 1 vehicle (for PIB or MBI)
- ◇ 2nd prize: Gift card to Middle Bass General Store
- ◇ 3rd prize: Bag of frozen shrimp from Costco

1. Mark your calendar.
2. Fill out registration form. (you will get map and kayak # at start)
3. Sign "Waiver and Liability Release" form.
4. Mail or hand registration form + signed release + check/money order payable to: "Put-in-Bay Township Park District" to:
Tina M Larson
1245 North Shore Drive
Middle Bass Island, Ohio 43446

Questions? Email: tmlarson@umich.edu
(Sorry OSU & MSU fans...) or call: 248-320-4529

Cost is \$20 if pre-registering and \$25 on-site day of the event – BUT YOU CAN DONATE MORE TO BENEFIT THE PRESERVES!!

In case you're feeling generous to fund whole or in part: consider a large entrance sign \$1500; 17"x22" interpretive trail sign \$200; (donor name/s on signs included); recycled plastic bench including name/s info inscription & installation \$2000.

For registration forms, go to <https://bit.ly/3tcE7A5>, or stop at the Lake Erie Islands Nature and Wildlife Center or at the Middle Bass Island State Park or e-mail at tlarson@umich.edu or leiconservancy@gmail.com.

Deadline to register for this awesome event is July 30th!

Proceeds from the event will benefit the Put-in-Bay Township Park District's newest preserves on Middle Bass Island.

Spring Bird Banding Schedule Come Visit and See the Birds!

Tom and Paula Bartlett will be banding birds on the islands again this spring. Below are the dates and times when you can come and visit the banding station to see the birds up close! All activities noted below are open to the public. They will start at Kelleys Island on April 18th and then move to Middle Bass on April 24th and then on to South Bass on May 1st coming back to Kelleys Island on May 16th and finishing up on North Bass the week of May 30th.
*All dates and times subject to change

Middle Bass Island—Middle Bass Island
East Point Preserve

This is located at the end of a private drive. Please drive through the gate to park near the banding station and avoid blocking the entrance. Do not park in private drives outside the gate.
RSVP at 419-366-2087 or
leiconservancy@gmail.com so we can arrange parking.

- Sunday, April 24th Dawn-3:00pm
- Monday, April 25th Dawn-3:00pm
- Tuesday, April 26th Dawn-3:00pm
- Wednesday, April 27th Dawn-3:00pm
- Thursday, April 28th Dawn-3:00pm
- Friday, April 29th Dawn-12:00pm

South Bass Island—The Vineyard-Scheeff
East Point Preserve

Turn left at the Vineyard sign just before the Scheeff East Point Preserve and drive back toward the red barn to park.

- Sunday, May 1st Dawn-3:00pm
- Monday, May 2nd 12:00pm-3:00pm
- Tuesday, May 3rd 12:00pm-3:00pm
- Wednesday, May 4th 12:00pm-3:00pm
- Sunday, May 8th Dawn-3:00pm
- Monday, May 9th 12:00pm-3:00pm
- Tuesday, May 10th 12:00pm-3:00pm
- Wednesday, May 11th 12:00pm-3:00pm

Kelleys Island-Long Point-Jones Preserve
Drive to Long Point and park to the left 100 yards before the gate and walk in.

- Monday, April 18th-Friday, April 22nd Dawn-3:00pm
- Monday, May 16th-Friday, May 20th Dawn-3:00pm

North Bass Island-Isle St. George-State Park Lodge
Must have own boat or plane transportation—Can also kayak over.

- Monday, May 30th 12:00pm-3:00pm
- Tuesday, May 31st-Thursday, June 2nd Dawn-3:00pm
- Friday, June 3rd Dawn-12:00pm

Freshwater Sensations

Christine Ontko
Bed and Breakfast
PO Box 307
419-366-1036
www.freshwatersensations.com



Welcome to The Boardwalk!

341 Bayview Ave
Put-in-Bay, OH 43456
419-285-3695

www.OhioVacationLand.com
440-341-6376



Rudy Cooks
Lake Erie Islands

(MORRISON WOODS CLOSING Continued from page 1)

owner, Marsha Collett, and Neal Hess for assistance. This 4.5 acre woodlot will eventually have a walking path and entrance benches donated by the Naugle and Finkbeiner families for visitors to enjoy. Its proximity to the Lake Erie Islands Nature and Wildlife Center will allow use for groups that visit the Center. We hope to dedicate the Preserve on August 7 at 2:00pm during Island Green Week. A small reception will be held at the Lake Erie Islands Nature and Wildlife Center immediately following.

More details to come!



Photos: Upper Left—Park District Contractor Mark LeKanka laying out the new trail; Lower Left—Two of the donated benches that have been ordered showing the inscriptions; Right—One of the large trees on the Morrison Woods property

Lake Erie Island Conservancy 2021 Financial Report *By Kelly Faris*

Lake Erie Islands Conservancy		Page 1	Land Protection Fund		Page 2
Year End Financial Report			Balance: Jan. 1, 2021		\$2,584.20
FINANCIAL From Jan. 1 to Dec. 31, 2021			Income:		
General Fund			Donations		\$43,901.48
Balance: Jan. 1, 2021		\$135,527.80	-----		
Income:			\$43,901.48		\$43,901.48
Donations	\$30,935.22				\$46,485.68
Calendar Ad	\$450.00		Expenditures:		
Ad Sales	\$700.00				
GLIA Refund	\$2,500.00		-----		
Life Members	\$4,000.00		\$0.00		
Sales	\$3,734.55		\$0.00		\$0.00
Support Dues	\$9,872.60		Balance: December 31, 2021		\$46,485.68
Plant Sales	\$1,883.15		Stewardship Fund		
Bird Seed Sales	\$4,206.00		Balance: Jan. 1, 2021		\$2,425.00
Intern			Income:		
Middle Bass Music	\$33,814.97		Donations		\$0.00
Interest	\$258.74		-----		\$0.00
			\$0.00		\$0.00
	\$92,355.23	\$92,355.23	Expenditures:		
		\$227,883.03	Site Review		\$0.00
			-----		\$0.00
Expenditures:			\$0.00		\$0.00
Land Acq/Maint	\$36,302.70		Balance: December 31, 2021		\$2,425.00
Office Supplies	\$2,387.56		General Fund		\$132,360.27
Newsletter	\$915.88		Land Protection Fund		\$46,485.68
Insurance	\$990.00		Stewardship Fund		\$2,425.00
Postage	\$1,403.33		-----		
Signs/Benches	\$2,028.50		TOTAL ALL FUNDS		\$181,270.95
Transportation	\$412.00				
Fees	\$1,075.00				
Stipend	\$12,000.00				
Program Supplies	\$3,096.99				
Bird Seed	\$3,594.68				
Plants/Trees	\$1,527.20				
AmeriCorp	\$2,075.00				
Middle Bass Music	\$21,659.07				
Misc.	\$4,510.00				
Brochure/Calendar	\$1,544.85				
	\$95,522.76	\$95,522.76	Kelly Faris, Treasurer		
			Financial Status as of December 31, 2021		
Balance: December 31, 2021		\$132,360.27			

LEIC Native Tree & Plant Sale ORDER FORM

The Lake Erie Islands Conservancy (LEIC) is now taking orders for native trees and plants for the islands. We are using Riverside Native Trees and Natives in Harmony for our native tree and plant sale. Buying and planting native trees and shrubs is a great way to provide quality habitat for the birds, butterflies, moths and other wildlife on the islands. We are promoting the planting of native trees and shrubs because our wildlife are adapted to feeding on these plants and using them for shelter. By planting native species, you are making your land more attractive to birds, bees, butterflies, moths and a host of other desirable species. This fundraiser will be used to support the LEIC land preservation and restoration programs!

Trees: Native trees and shrubs are for sale in 3-gallon containers. The varieties available are swamp white oak, white oak, bur oak, northern red oak, chinquapin oak, common hackberry, red maple, silver maple, American Basswood, and Kentucky Coffee Tree. Shrubs offered are hoptree, silky dogwood, gray dogwood, swamp rose mallow, buttonbush, bladdernut, and common elderberry. All these trees and shrubs are native to the islands and will thrive in this environment. They have been grown from Ohio seed stock by Riverside Native Trees in Delaware, Ohio.

We also have a few white oaks grown from island acorns by Mike Rupp offered this year. Order by using the order form found on www.lakeerieislandsconservancy.org-can pay by credit card by calling Lisa Brohl at 419-366-2087 or send a check.

Plants: LEIC is also selling varieties of native perennial plants and flowers from Natives in Harmony from Marengo, Ohio. You can use the same order form for the list of native plant plugs. We are also offering spring wildflower kits of 15 plugs, 3 each of 5 different varieties-Blue Phlox, Dutchman's Breeches, Spring Beauties, Mayapples, and Wild Geranium for the price of \$40.

Order forms for native trees and a list of individual native plants are available at www.lakeerieislandsconservancy.org or by contacting Lisa at 419-366-2087 or leiconservancy@gmail.com.

Beautiful your yard and support the Conservancy! Orders may be placed until April 15 and we will arrange a pickup/delivery on the island in early May. For those on Middle Bass who wish to order, a pickup on Middle Bass will be set up as well.

Send Order Form and Payment to: LEIC, P.O.Box 461, Put-in-Bay, OH 43456
Please make checks payable to LEIC-Add \$5.00 for shipping/handling - Thank You for your support!!

Name _____


Address _____

Phone _____ Email _____

Riverside Native Trees Selection (Order from Lisa Brohl - 419-366-2087)

	TREES	Qty	Size	Cost	Total
	Northern Red Oak - well drained		3-5'	\$35	
	Bur Oak - can withstand drought or wet conditions		2-6'	\$40	
	Swamp White Oak - wet areas		2-4'	\$30	
	Common Hackberry - moist and fertile soil, also accepts variety even rocks and hillsides		4-6'	\$40	
	White Oak - can withstand drought or wet conditions		6-12'	\$50	
	Red Maple - moist and fertile soil, swamps, streambanks, bottomlands		3-5'	\$40	
	Silver Maple - moist and fertile soil, swamps, streambanks, bottomlands		2-4'	\$30	
	Chinquapin/Chinkapin Oak - wet or well-drained, high ph, rocks		1-2'	\$20	
	Kentucky Coffee Tree - moist, alkaline soils - perfect for the Island		1-2'	\$20	
	American Basswood - moist, rich well-drained soils, bees and birds love		4-6'	\$40	
	White Oak Seedlings (Grown from Island Acorns!) - can withstand drought or wet conditions		~1'	\$15	
	Total				

	SHRUBS	Qty	Size	Cost	Total
	Buttonbush - shorelines and swamps, moist soil, full sun, flowering is poor in shade or dry soil <small>photo "Cephalanthus occidentalis" by Rufino Osorio (Pamodan)</small>		3'	\$25	
	Swamp Rose Mallow - moist to wet, full sun <small>photo courtesy of Riverside Native Trees</small>		4'	\$30	
	Silky Dogwood - moist to slightly drier, full sun to part shade, blue berries <small>photo "Blue-fruited Dogwood" by galeazzi (Dan Muller)</small>		3-5'	\$30	
	Gray Dogwood - moist to slightly drier, full sun to part shade, white berries <small>photo "Gray Dogwood" by mltcizer (Dan Muller)</small>		2-3'	\$20	
	Bladdernut - moist, well-drained or dryer, highly adaptable <small>photo courtesy of Riverside Native Trees</small>		2'	\$20	
	Hoptree - wet or well-drained, sun to partial shade <small>photo "Hoptree (Ptelea argentea)" by George Slicker</small>		4-6'	\$40	
	Common Elderberry - moist soil, creates clump quickly, sun <small>photo courtesy of Riverside Native Trees</small>		2-4'	\$25	
	Total				

Tree Leaf Photos obtained from "What Tree Is It?" - OPLIN-OHS/CC BY 3.0 

Natives in Harmony Plant Selection (Order from Lisa Brohl - 419-366-2087)

Plants Names and Info	2.5" Plug (\$3) Qty.	Quarts (\$5) Qty.	Gallons (\$8) Qty.	Plants Names and Info	2.5" Plug (\$3) Qty.	Quarts (\$5) Qty.	Kits (\$40) Qty.
Dense Blazingstar-Lake Erie - full sun, sand to clay, medium to moist, birds, butterflies, hummingbirds				Sharp-leaved Hepatica - light shade, well-drained, loamy, soil can contain rocky pieces, mid-spring			
Boneset - full to partial sun, humus-rich, wet to moist soil, late summer to early fall				Spring Beauty - dappled sunlight, moist to slightly dry, rich loamy soil, spring to early summer			
Cardinal Flower - full sun to shade, moist to wet, summer				Sweet Cicely - partially shady, sandy to loam, rich humus soil, mid-spring to early summer			
Dutchman's Breeches - dappled to light shade, moist conditions, rich loamy soil, early to mid-spring				Virginia Bluebells - shade, woodland, spring			
Evening Primrose - sun, somewhat moist, prairies or thickets to lakeshore dunes, mid-summer to fall, honeybees, hummingbirds				Virginia Mountain Mint - part shade to full sun, rocky, summer			
Germander - part shade to full sun, moist to medium, mid-summer				Wild Bergamot (<i>monarda fistulosa</i>) - full to partial sun, moist to dry sandy or loamy soil, fields and thickets, mid-summer to fall			
Great Blue Lobelia - part shade to full sun, wet, late summer-fall				Wild Blue Phlox - shade, woodland, spring			
Nodding Wild Onion - sun, will grow in rocky ground, summer				Wild Columbine - rocky, sun or part shade, spring			
Prairie Loosestrife - full to partial sun, moist to wet, loam to gravel, early to late summer				Wild Geranium - shade, woodland, spring			
Red (Swamp) Milkweed - sun to partial shade, moist soil, mid-summer to early fall				Spring Wildflower Kits (15 plants-3 plugs of each: Mayapple, Blue Phlox, Spring Beauty, Dutchman's Breeches, Wild Geranium) \$40.			
Quantity Totals	Plugs	Quarts	Gallons	Quantity Totals	Plugs	Quarts	Kits
Price Each	\$3.00	\$5.00	\$8.00	Price Each	\$3.00	\$5.00	\$40.00
Native Plant Totals				Native Plant Totals			

Trees Total	
--------------------	--

Plants Total	
---------------------	--

Grand Total	\$
--------------------	-----------

AmeriCorps Intern for the Islands-Great Program, Great Experience!

By Lisa Brohl



The Lake Erie Islands Conservancy, Put-in-Bay Township Park District, and Lake Erie Islands Nature and Wildlife Center will be sharing an AmeriCorps intern through a partnership with Appalachian Conservation Corps for the 2022 Summer to assist with our land preservation and educational programs.

We have had great experiences with our interns bringing new ideas and fresh faces to our programs in the summer. We have had wonderful interns starting with Colleen O'Brien in 2011 and including Leah Bilski, Carmen Levand, Jackie Taylor, Chloe Nostrant, Jenna Prahst, Samantha Newhouse, Emma Young, Olive O'Rourke-Scherf, and Regan Monnett. Each brought their special talents and left us with finished projects we now enjoy! The intern goes back with a new appreciation of our island resources.

We are looking for applicants for this AmeriCorps Environmental Steward Intern for the summer of 2022. It is a ten week program working a minimum of 30 hrs. per week. Interns are provided a stipend of \$325.50 weekly and a Segal Educational Award of \$1,342.86 at the completion of the internship-to be used for qualified student loans or tuition. The intern will work on projects like trail maintenance, invasive plant management, grant writing, design of signs and brochures, social media, wildlife and plant surveys, nest box monitoring, etc. for the Conservancy and the Park District depending on the skill set of the intern. For the LEINWC, the intern can assist with tours, Wild Tuesday, Nature Camp, exhibits, community events and outreach. Applicants must be at least 17 years old. Preference is given to university students but a high school education is all that is required to use the education award. It is preferred to have island housing. If interested, contact Lisa Brohl at leiconservancy@gmail.com or 419-366-2087. To take a look at the Appalachian Conservation Corps Internship program, go to their website at www.appalachiancc.org/individual-placements. To apply- <https://sccorps-openhire.silkroad.com/epostings/?fuseaction=app.jobinfo&jobid=3235&version=1>

We are also looking for donations toward this great program. If you are interested in donating, contact Lisa or sending a check to LEIC, P.O. Box 461, Put-in-Bay, Ohio 43456 with AmeriCorps on the memo line. You may also use our PayPal at www.lakeerieislandsconservancy.org but designate

ENVIRONMENTAL STEWARD INTERNSHIP AT THE LAKE ERIE ISLANDS CONSERVANCY



Spend your Summer advocating for and preserving the scenic and natural areas at a unique Island area. This intern will receive a range of experiences that will give them a glimpse into operations and communications of a non profit, park district, and nature center open to the public by creating and running an educational program, handling live animals, invasive species control, publishing educational and marketing content, and more depending on the skill set and interests of the intern. *Preference to those with island housing, ferry pass may be provided.

POSITION DETAILS

- Location: Put-In-Bay, Ohio
- Positions Available: 1 Internship
- Position Dates: June - August 2022
- Pay Rate: \$325.50/week
- Benefits: \$1,342.86 education award, loan forbearance, access to our Member Assistance Program, uniform shirts, on-the-job training, and professional development opportunities

LEARN MORE AND APPLY AT

APPALACHIANCC.ORG/OPEN-POSITIONS

Questions? Contact accrecruiting@conservationlegacy.org



for the AmeriCorps intern program. If we are unable to get an intern that has island housing already, we would welcome housing for a ten week intern as well.

Thanks to Julene Market and John and Paula Ladd who have donated already!

Spotted Lantern Fly in Ohio Now! YIKES!! By Lisa Brohl

Egg masses of Spotted Lanternfly (*Lycorma delicatula*) on Tree of Heaven (*Ailanthus altissima*) were discovered by an arborist during the week of February 14, 2022. Ohio Department of Agriculture inspected the trees the week of February 21st. A formal announcement was made by ODA in early March 2022.

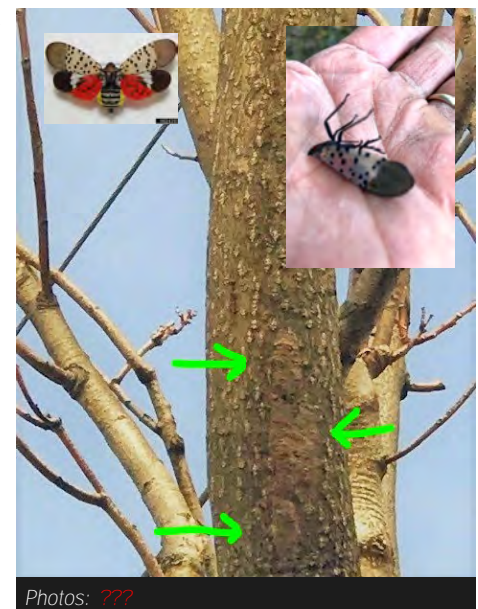
The Put-in-Bay Township Park District had tree of heaven removed from the Dodge Woods and Cooper's Woods Preserve last year to prevent the spread of the spotted lanternfly. We should all be out looking on the island to make sure that we do not have any egg masses on any trees here on the islands.

Here are some tips from the Ohio State University Buckeye Yard and Garden online at <https://bvgl.osu.edu/index.php/node/1925>

So, what can you do?

1. **Locate Tree of Heaven and scout it once a week.**
 - Video to locate Tree of Heaven ID <https://www.youtube.com/watch?v=O-je2sxVIXc&t=29s>
2. **Load the Great Lakes Early Detection Network App on your Smart Phone**
 - Video on how to load GLEDN App <https://www.youtube.com/watch?v=PT9lik8X-Fs>
3. **Scout for Spotted Lanternfly**
 - Video about Spotted Lanternfly ID https://www.youtube.com/watch?v=L2i3HTd_65M
4. **Report findings to GLEDN on the App or to the Ohio Department of Agriculture**
 - ODA Link here: <https://agri.ohio.gov/divisions/plant-health/invasive-pests/slf>
 - Click on Report an Infestation

Together, we can Slow the Spread!



Photos: ???

GLIA Leadership Webinar

GLIA Great Lakes Islands Alliance
2022 Expert Webinar Series

"Building Leadership to Strengthen Island Community Resilience"
Featuring Kate Tagai, Island Institute
February 24, 2022

Building Leadership to Strengthen Island Community Resilience

The Great Lakes Islands Alliance (GLIA) hosted a zoom meeting on February 24, 2022 for Great Lakes island leaders, residents, and advocates sponsored by the Ottawa County Community Foundation. The target audience for this event was island community members who participate in teams or committees, for example local government, non-profits, and others. In addition to our core purpose of connecting our islands to one another, GLIA strives to provide you access to leading experts from around the region, nation and world on topics important to your communities. Learn more about GLIA by visiting our website: <https://glialliance.org>.

In the fall of 2021, the Island Institute (Rockland, Maine) launched a leadership framework based on academic research and its 35 years of on-the-ground community development history and how it can be applied to help organizations, teams, and individuals to develop skills, create meaningful leadership. (pictured here)

Learn more about the Island Institute by visiting their website: <https://www.islandinstitute.org/>.

Presenter Bio. Kate Tagai is a Senior Community Development Officer at the Island Institute in Rockland, Maine. She has spent eight years working with island and coastal leaders in Maine to build community resiliency.

The following members of the Lake Erie Islands Conservancy attended the webinar-Lisa Brohl, Diane Nemec, Linda Bugoci, Tina Larson, Bill Sulesky, Colleen Kerkay, and Hal Leitch. Member Peter Huston is the director and member Mike Gora is the Steering Committee Chair of GLIA.

The Conservancy wrote the grant for the Ottawa County Community Foundation sponsorship of this meeting as we feel strongly about the mission of GLIA.- The Great Lakes Islands Alliance encourages relationship building, fosters information exchange, and leverages resources to address shared challenges and embrace opportunities to benefit islands.

Since 2017, the Great Lakes Islands Alliance has been connecting islanders and amplifying their voices. As core functions, GLIA hosts robust Zoom



discussions every month plus the annual Great Lakes Islands Summit. Membership is now over 150 people from 19 different islands - the crown jewels of the Great Lakes! We know that we need a healthy resilient community to be able to properly steward our natural resources.

Thanks to the Ottawa County Community Foundation for their Sponsorship and Support!

Links to the Podcast are below:

- <https://www.youtube.com/watch?v=UtzPoAnrhQU&authuser=0>
- <https://youtu.be/UtzPoAnrhQU>



Support LEIC through Amazon Smile!

The Lake Erie Islands Conservancy website sports an ad for the Amazon Smile website. Shopping here will send donations to the LEIC account. Click the box to go directly to the Amazon Smile website! Thanks to those of you who have been shopping with Smile!



Kelleys Island Audubon Club
Kelleys Island Audubon Club
Kelleys Island, OH 43438
419.746.2258
www.KelleysIslandNature.com

Discover Nature on Kelleys Island!

ROBERT APLING + ASSOCIATES

Providing highly personalized tax, accounting, and financial advice

2155 Oak Harbor Rd.
Fremont, OH 43420
419-355-8200



Back to the Wild Visit May 4, 2022

Back to the Wild, a Wildlife Rehabilitation Clinic in Castalia, Ohio, will visit Put-in-Bay, on Wednesday, May 4, 2022. They will bring their birds and critters for a show at 3:15 at the Put-in-Bay Town Hall. Don't miss it!!!! The visit is sponsored by the Put-in-Bay Recreation Committee, the Lake Erie Islands Nature and Wildlife Center, the Lake Erie Islands Conservancy, and the Miller Boat Line.



Conservancy Christmas Party *By Lisa Brohl*

Thanks to C.C. Wisniewski and crew at the Put-in-Bay Yacht Club for a delicious pasta buffet and beautiful decorations and great service! Members brought lots of yummy desserts to share and cocktails were enjoyed. A toast was held to our preserves. Allen Duff was present of the future Duff Preserve Woods-he and his brothers were thanked for their assistance.

Present and enjoying the comradery and celebration were:

Lisa and Russ Brohl
Susan and Mike Byrnes
Marsha Collett
Jeff and Kendra Koehler
Bob and Dianne Smith
Jean and Bob Hilt
Mark Nemeč
Mike McIntyre
Allen Duff
Mother Mary Staley
Tom and Stephanie Thanasiu
Thanks to all for joining us!



Photos: Above—Lisa and Russ Brohl Photo by Jeff Koehler
Below Left—Brief talk by Lisa Brohl Photo by Susan Byrnes;
Below Right—C.C. Wisniewski, PIBYC General Manager Photo by Lisa Brohl



Conservationists of the Great Lakes | North Coast Chronicles

LEIC member Helen Brohl has produced another podcast on the Great Lakes with local color. This latest podcast titled Conservationists of the Great Lakes features Lisa Brohl of LEIC and Pam Grassmick of Beaver Island, another partner in the Great Lakes Islands Alliance. Thanks to our members at The Goat Soup and Whiskey Restaurant for sponsorship of the podcast. The information and link to podcast are below.

Preserving the Great Lakes for future generations has been in the hearts and minds of locals who initiated grassroots movements that literally changed the landscape around the region! In the 9th episode of North Coast Chronicles: Tales from the Great Lakes, we welcome three conservation heroes who have truly made a difference. Lisa Kutschbach Brohl is Chair and a founding member of the Lake Erie Islands Conservancy, which has preserved 100 acres of very limited coastal lands. Greg Chown, Executive Director and founding member of the Grand

Traverse Regional Land Conservancy, has led the protection of thousands of acres in North Michigan. And, also with us is Pamela Grassmick from Beaver Island whose work with the Beaver Island Association has become a model for invasives control! How did these amazing conservationists take their passion for Great Lakes resource protection to such successful fruition? Listen as they inspire everyone to walk in their footsteps!

This episode was sponsored by the Goat Soup and Whiskey

<https://www.coastalnewstoday.com/podcasts/conservation-heroes-of-the-great-lakes-north-coast-chronicles>



(INVASIVE PLANTS Continued from page 6)

host plants to several caterpillars. Ohio Department of Natural Resources, Ohio Invasive Plant Council and National Wildlife Federation offers a list of native alternatives to common landscaping plants and trees.

Websites to Check Out!

https://www.oipc.info/uploads/5/8/6/5/58652481/alternatives_for_invasive_plants.pdf



Photo: Left—Hydrocotyle Right—Frogbit

<https://woodlandstewards.osu.edu/sites/woodlands/files/imce/0013.pdf>

<https://ohiodnr.gov/wps/portal/gov/odnr/discover-and-learn/safety-conservation/about-ODNR/nature-preserves/Documents/native-plants-lists/>

www.nwf.org/nativeplantfinder



Catawba Avenue

Erie Island Carts.com

At the Airport ~ Overnight rentals

and Reservations welcome

419-285-KART



Yardworks

PO Box 538

Dan and Valerie Kowalski Put-In-Bay, Oh 43456
Owners (419-) 285-2147

Middle Bass Music Fest is Coming Again This Summer!

Middle Bass Island State Park and Lonz Winery Patio and Pavilion will be rockin' and a rolling, jumpin' and a jiving and generally a fun place to be on July 16, 2022 when the Middle Bass Music Festival rolls into town. It's going to be a great time with live music, an artist tent, food trucks, beer, wine, and all your neighbors hanging out enjoying some Middle Bass Island charm.

During the music fest we'll need volunteers to help serve beer, sell tee shirts and tickets, set up, clean up, coordinate the art tent and generally pitch in for a good time and a good cause. Please email Ann Hicks at hicksagma@gmail.com to volunteer an hour or 2 of your time to help us with the festival. We will have tables available for local artists to sell their creations-contact Lisa Brohl at 419-366-2087 or at leiconservancy@gmail.com to reserve a table.

There will be an extra Miller ferry at 7:00pm from Middle Bass to take back attendees-no cars.

Benny on Bass will be making an appearance again as our music fest icon.

Saturday July 16, 2022

Noon to 7 PM



Free Admission

MIDDLE BASS MUSIC FEST



The Shoutouts #7—
By Jamie Escolá



Chardon Polka Band

The Shootouts **The Lucky Fools**
The Chardon Polka Band
Latin City Soul **North Coast Goats**



Headlining this year's event will be the Shootouts in support of their recent release *Bullseye* via Soundly Music. The Shootouts' deep love of traditional country music forms the bedrock of their signature sound and have since grown into the unique blend that make up The Shootouts – equal parts vintage Nashville, Texas swing, and Bakersfield bravado. The Shootouts are a fantastic local recording act and worth seeing in person.

Local island talent Lucas Guy will be bringing his band Lucky Fools to the festival this year playing some of his familiar favorites as well as music from their new just released EP. Due to popular demand the Chardon Polka Band is BACK for another appearance at our music fest. – A wildly entertaining look at polkas in the modern age; They were so fun last year, you couldn't stop laughing. We are also bringing in Latin City Soul a unique ten (10) piece band that demonstrates their versatility to interpret a masterful songbook; From Salsa to Rhythm and Blues to Latin Jazz.

When you get hungry you can enjoy the BBQ from Jimmy G's or Rosie's Rolling Food Truck, and to quench your thirst get some beer from Catawba Island Brewing Company, and wine from Heineman's.

The Middle Bass Music Fest is brought to you by The Middle Bass Dock Company, The Middle Bass State Park & Ohio Department of Natural Resources, The Island Grind at the Lonz Winery Presshouse, Lake Erie Shores and Islands, Ohio Arts Council, Middle Bass Men's Club and your Lake Erie Islands Conservancy www.lakeerieislandsconservancy.org Lake Erie Islands Conservancy will be the recipient of any proceeds from this event. They will also be selling tee shirts, tote bags and handing out a variety of information on our island activities and preserves. Learn about how you can help preserve island property for future generations.

HOW DO YOU GET TO MIDDLE BASS?

There are several ways to get to Middle Bass Island that don't involve your own boat. The best option is Miller Ferry from Catawba. www.millerferry.com

Take the 10:15 am or 12:15 pm from Catawba to Middle Bass. Return to Catawba at 5:15 pm or 7:00 pm.

Or From Port Clinton take the Jet Express to Put-in-Bay. Then, hop on the Sonny S water taxi to Middle Bass from Put-in-Bay.

Sonny S from downtown Put-in-Bay to Middle Bass Island. Sonny S is a frequent water taxi service between the two islands.

Miller Ferry from Catawba Island to Middle Bass. The last Miller Ferry back to Catawba on Saturday is at 7:00 pm. Website: <https://www.millerferry.com/>

Jet Express from Port Clinton to Put-in-Bay. This is another great option from the mainland. As mentioned above, to get to the show, first take the Jet Express to Put-in-Bay. From there, get the Sonny S to Middle Bass Island. When returning this route also works well because the Jet Express runs boats back to Port Clinton late into the night.

Website: <https://jet-express.com/the-jet-express/>

Check the boat company websites for more details. All ferry schedules are subject to change due to weather conditions, etc.

Hope to see you on Middle Bass Island. It's going to be a fun day-and a great way to support the Conservancy!

PSA For You, For Your Pets, and For Our Preserves*



While running through the woods, even in winter, your pet is brushing up against poison ivy. The urushiol oil that makes you itch is present all year long in the plant. Your pet is bringing it home not only for him but also for you.



When pets like Coda chase and corner wildlife, they can be bit or scratched resulting in injury to your pet that may require vet care or shots. While Coda here may seem to be innocently sniffing at critters in the log, a cornered animal can strike before either of you know what happened.



Although some of our preserves have undergone some amazing transformations from former home or cottage operations, they still may contain debris (broken glass, jagged metal) still present from former residences. This is especially true at Scheeff East Point and Massie Cliffside Preserve. There are still old barbed wire fences off trail at the Cooper's Woods Preserve. If your dog is on a leash and with you on the trail, they will not encounter these dangers. If running loose on their own, they could find these items.



The stress from being chased by domestic dogs is more than a lot of wildlife and birds can handle especially in winter when they are already stressed finding food in a lean time of year. Young birds and wildlife are often the ones caught by dogs like Coda here. Dogs like this can snack down a young squirrel before you could even move to stop it.



Your pets' droppings could leave parasites and diseases for wildlife even if they don't catch and eat the wild animals. In addition, your pets' droppings and urine can change the pH of soil and cause the invasion of non-native plants. Worse yet, disturbing the soil and native plants such as Coda is doing above, makes it much easier for those non-native plants to take hold and take over.

For the safety of your pet, please keep on a leash while visiting our island preserves.

*Preserve PSA "starring" Coda the dog

Spring is here! Welcome Spring! ***See page 20 for additional details*

Arbor Day Celebration at Tree City Site at Post Office—Friday, April 29 at 4:00 p.m.



J. Sterling Morton was a newspaper editor who had moved from Michigan to Nebraska. Trees were abundant in Michigan but not in Nebraska. To address this dearth of trees Mr. Morton originated the first American Arbor Day in Nebraska City, Nebraska, on April 10, 1872. (His son Joy Norton

was the founder of the Morton Salt Company and its iconic blue cylinder salt container.) It was Joy Morton who donated the family's 52 room mansion (a look alike to the White House) to the Arbor Day Foundation. The Foundation operates this home as a museum and the 72 acre park surrounding the home.

Today "Arbor Day" is celebrated around the world from Iran to Israel, from China to Saudi Arabia, Russia to Cuba.

Put-in-Bay, Ohio, has been named a Tree City USA by the Arbor Day Foundation in honor of its commitment to the goals and principles of the Arbor Day Foundation: a tree commission, a tree-care ordinance, an annual community forestry budget, and an Arbor Day observance and proclamation.

Put-in-Bay's Arbor Day Celebration will take place on Friday, April 29, 2022, 4:00 pm, at the Village Arbor Day site adjacent to the Put-in-Bay

Post Office. The Council of the Village of Put-in-Bay has allocated funds for Arbor Day expenses. During the celebration, two trees, a Hop Tree and a Spice Bush, will be planted by members of the community.

In the 19th century, German immigrants in Texas used hop tree seeds in the place of hops to make beer. Thus "Hop Tree" got its common name. The hoptree or wafer ash is a host plant for the Giant Swallowtail butterfly. A Spicebush is named for its spicy, fragrant leaves and stems. It is native to the woodlands in the Midwest and a host plant for the Spicebush Swallowtail.

Arbor Day translates to "tree" day from the Latin origin of the word arbor. National Arbor Day is celebrated on the last Friday in April.

Members of the Village of Put-in-Bay Tree Commission are Lisa Brohl, Kelly Faris, and Kendra Koehler.

The Village of Put-in-Bay Tree Commission will celebrate this Arbor Day in compliance with the CDC Covid recommendations.



Island Wide Garage Sale Saturday, May 14—Conservancy Fundraiser!

The Lake Erie Islands Conservancy will be participating in the Island Wide Garage Sale to be held on Saturday May 14, 2022 from 10:00am to 6:00pm with tables at the John and Paula Ladd residence at the corner of Catawba and Erie Avenue. We will have native plants, t-shirts, tote bags, hats, beverage koozies, and more for sale. If you would like to donate any household items for sale that day, please bring in a box with your name with suggested pricing that morning at 8:30am. So now is a good time to go through your garage and home

and see what you could donate for us to sell! The Ladd home is a great sale location—we thank them for letting us use the space again! We will ask that you pick up later anything that does not sell. Stacy Clink will be organizing for us. Questions contact her at scscout@embarqmail.com or Lisa Brohl at 419-366-2087 or leiconservancy@gmail.com. The Lake Erie Islands Nature and Wildlife Center will also have sales items for purchase.

Lake Erie Islands Conservancy Items and Gift Ideas

By Lisa Brohl

There are Conservancy t-shirts in black, blue and moss, Conservancy hats in two colors, Sailcloth and organic cotton tote bags, as well as Middle Bass Music Fest beverage cozies available for sale. Consider a Conservancy membership or donation to our Land Protection Fund for a gift that keeps on giving into the future!



Become an LEIC Member for just \$25 for an entire year!

Please see page 19 for details.



LEIC and PIBTPD Wish List

The Preserves are waking from their icy slumber and are in need of much attention and love. If you are willing, we accept donations of your time and skills or if a monetary gift works better, that is wonderful too. We are grateful for any and all! We are certain visitors to our Preserves will be just as grateful as us for your help! Do let us know if you or anyone you know can help out with any of these items at leiconservancy@gmail.com or 419-366-2087. New members—Check us out at www.lakeerieislandsconservancy.org!

- AmeriCorps Intern for 2022
- Website and Social Media Assistance
- Volunteers Always Needed: spread mulch on trails, remove downed trees and pick up litter—garlic mustard pulling, amur honeysuckle removal—all preserves.
- Adobe, Access, and Arc GIS Programs or volunteers with these skills.
- Recycled Copying Paper, Ink for Printers (Brother LC 61, HP 970XL, HP 971XL—must not be generic)
- Larger Office Space
- Land Protection Fund Donations
- Golf Cart for Summer Transport of tools and people.
- New Bicycle Rack for the Jane Coates Wildflower Trail—approximately \$900—can have name on rack
- Bicycle Racks, Interpretive Signs (\$250 each) for Duff Woods or Morrison Woods Preserves. Benches (\$2,000) for Duff Woods Preserve



Attention Nature Lovers and Photo Buffs: Interested in submitting your Conservancy nature photo(s) for the 2023 LEIC Calendar? See instructions and details below!

- Send all of your Conservancy related entries to LEICPhotoSubmit@gmail.com with "2023 Calendar" in the subject line. Pics for the Newsletter can be sent there too!
- Include the photographer's contact info (name, email, phone, etc.), a short description of subject and details. Make sure to include where/when the photo was taken. Minimum Size: 300 dpi at 11.5" wide by 9" tall.
- If selected, you'll receive photo credit and 1 calendar!

We can't wait to see all of your wonderful submissions, so go enjoy the seasons of the preserves: spring, summer, fall, and winter!!

(GARLIC MUSTARD CHALLENGE Continued from page 5)

much higher at our 30 acre Coopers Woods so with enough helping hands we could win this. Weight will be calculated as total pounds pulled and pounds per volunteer hour. The grand prize for winning this friendly competition is bragging rights and a sense of accomplishment.

Bring garden gloves to wear if you can. Some folks have had a rare allergic reaction to the strong garlic scented oils in the plant. We will have some garden gloves for those who need them still. We will also have cold drinking water in a large cooler container—please bring your own water bottle for a refill!

And remember you can take some garlic mustard home to eat—great in chip dip, pasta, salads, etc. Just do not take it home to plant!!!

There will be a prize for each person pulling at least two bags of garlic mustard and a grand prizes for those pulling the most that day. Register by emailing leiconservancy@gmail.com or by texting Lisa Brohl at 419-366-2087. Walk ins welcome but registering will help us in planning for prizes.

EnviroScience removed invasive plants/trees from our Cooper's Woods Preserve and Dodge Woods Preserve last year. This Challenge and Earth Week Challenge will help us to restore the native plants and animal community of the Cooper's Woods Preserve.



FIRST NATIONAL BANK
"Your Bank of a Lifetime"
WWW.FNBLIFETIME.COM FDIC

Proud supporter of the Lake Erie Islands Conservancy

Bellevue | Catawba | Clyde | Fremont | Perkins | Port Clinton | Put-In-Bay | Sandusky

419-285-2608



MIDDLE BASS GENERAL STORE
MIDDLE BASS ISLAND

New Pizza Shop and Bar
Come Visit us .. It is worth the trip



NEWS
INFORMATION
PHOTOS

www.putinbaydaily.com

A Special THANKS...



Thanks to members of Linda Shull's family for doing our annual membership mailing during the holidays! Shown here are Chuck, Tara, Nevan, Kilian and Niall Shull.



Russ Brohl removing downed tree at Massie Cliffside Preserve.



Hope and Lear Cooks, Macy Ladd, and Ella and Lukas Kostura folded, labeled and mailed our December newsletters.

...Oh yes! Thanks to Marty and Kelly Faris for picking them up at Bostwick Braun and to Bostwick Braun for beautiful printing.



Susan Ferguson continues to walk our shores and pick up litter that is brought in by winter storms and visitors at the Scheeff East Point Preserve and spent some time picking up litter along the roadside of Dodge and Cooper's Woods Preserve.

Thanks again to Julene for writing those thank you notes-we have had a lot to be thankful for!

Thanks Linda Shull and Linda Bugoci for working on our new updated membership lists.

LEIC Member Bob Reynolds donated a paper shredder for the Conservancy office-thanks Bob!



Can you help?

We could use volunteers at our tables at the Ohio Wildlife Diversity Conference in Columbus May 11 and at Founders Day on South Bass on June 11. Call Lisa at 419-366-2087 if you can help!



The Dodge House
 "Family owned since the 1880's"
www.DodgeHousePIB.com
 ~Largest Waterfront Family Lodging on Put in Bay~
 Perfect for Weddings,
 Family Reunions, Corporate Retreats
 419-341-9760



New and Renewing Members*

Friends

Ellen and John Ballas
Jack Berninger
Judy Bransome
Ty and Jeanne Burgess
Tracy Burgess
Joe and Carol Cerny
Barb Chryslar
Carl Cooper
Bob Cummings
Martha Dykes
Sue Ferguson
Susan Harrington
Amy and Peter Huston
E. R. Isaly
Luella Kacirek
Susan Latham
Ken and Lynda Leque
Barb and Don Prahst
Natalie and Stephen Price
Jeff and Lisi Puffenberger
Mary Pugh
Sue Seaberg
Gerald Shanley
Olive O'Rourke Scherf
Pam Stephens
Patty and William Sulesky jr.
Dianne S. Szabo
Christine and Al Tielke
Sarah Toole
Phil Walton

Supporters

Janine M. Anteau
Karen Burris
Margaret Carlino
Susan and Walter Duff
Bobbie Ann Dunn
Darren Dunning
Janet Eriksen
Kelly and Marty Faris
James H. French
William and Megan Gau
Kristine Hart
Lois and Bill Jellison
Kathryn Knaser
David Knowles
Mike Motycka
Tim and Jane O'Brien
David and Bonnie Petro
Fran Poe
Eileen Prendergast
Todd and Marie Rader
Jeff Ramsbottom
John Schrenk
John F. Shelley
Bill and Joyce Slough
Loretta Smith
William and Judith Ann
Tucholsky
Nancy Welter
Janice Williams
Debra K Woischke

Contributors

Christine Armbrecht
H. Thomas and Paula
Bartlett

Joan Booker
Sara Booker
Dave E. Clark
Joan E. Copeland
Elizabeth Daly
Mark and Marguerite Frey
Jody and Bob Frimel
Dustin Heineman
Jim Juknialis
Thomas C. Marsh
Laureen Mooney
Dave and Barb Nostrant
Deborah Parker
Kristin Parrish
Mark and Linda Seeman
Bill and Penny Spanfellner
Alberta Stoney
Nick and Kathy Tagliaferri
Edward Tancock

Stewards

Harry and Lisa Bircher
Sarah Burlingham
Jim and Sally Duffy
Dr. Robert Jellison and Irene
Yamashita
Joseph and Maria Link
Bradley Ohlemacher
John and Louise Titchener

Patrons

Bob Reutter

Business Memberships

The Candy Bar
Dodge House LLC
First National Bank
Heineman Winery
Jet Express
Lake Erie Islands Historical
Society
Middle Bass General Store
Miller Boat Line
Put-in-Bay Surf Shop

Land Protection Fund

Beverly Blietz
Tracy Burgess
Bob Krause
Janice Williams
Stan and Connie Wulkowicz
Yardworks-Val and Dan
Kowalksi

Stewardship Fund

Marvin and Gail Duff
Bob Krause
Joseph and Maria Link
Tim and Jane O'Brien
Yardworks-Val and Dan
Kowalski

Life Members

John Baker
Mark and Lisa Berens
Lisa Benjamin
Marv and Pat Booker
Ron and Audrey Borchert
Jon D. Brausch
Sandra Brausch
Jim and Betsy Brohl
Russ & Lisa Brohl
Linda and Dave Bugoci
Valerie Chornyak
David and Jacquelyn Clark
Alan & Stacey Clink
Gary and Carol Coates
Ken and Jennifer Farber
Frederick Fether
Betty and Charles Finkbeiner
Christian L. Geiss
Richard Gump
Terence and Lynda Heaton
Scott Jackson
Judy and Joseph Janicki
Karen A. Jennings
Mary and Tom Katzenmeyer
Bob Krause
John & Paula Ladd
Georgia MacVean
Julene Market
Elaine and Howard Martens
Mary Ann McCann

Donations/Grants

Pati and Raymond Arth Family
Fund
Michael Durinsky III-Cyber
Grant-Energy Harbor
Suzanne and Joe Kostura
Joseph Rutter
Linda and Joe Shull in Memory
of Grace Woss
Ron and Audrey Borchert in
Memory of Delores Nemec,
honor of Carl and Diane

Donations in Memory of

Carol Richardson

Helen Brohl
Lisa and Russ Brohl
Dan and Janet Gaugler
Friedrich Hoffman
Julene Market
Rich and Mary Ann Plewacki
Frances C. and Sandra N.
Stark
Diane Walker

Michael McIntyre and
Elizabeth Heineman
Valerie Mettler
Greg Millat
Mark Nemec
Chris and Kathy North
Roger & Mary Parker
Joe and Michelle Pennington
Mary Ann and Rich Plewacki
Hank & Gayle Polcyn
Carol Richardson
Richard and Carol Roberts
Fritz and Pam Rudolph
Ken and Ann Shelton
Mary L. Staley
Kristin Stanford
Matt Thomas
Zoe and Brad Titchener
Carley Tobias
Valerie and Dan Kowalski

NEW Life Members:

Patti and Raymond Arth
Beverly Blietz
Marvin and Gail Duff
David Kaman
Dave and Tina Larson
Bruce and Kim Miles
Charles B. 'Pete' Pearson
Drs. Cherylyn Schurtz and
Jacob Maciejewski
Business Ad for Life-
Yardworks-Val and Dan
Kowalski

AmeriCorps Intern

Donations

Julene Market
John and Paula Ladd

Calendar Sponsors

Arbor Inn Bed and Breakfast
The Boardwalk
Conservation Realty Group
Farber Specialty Vehicles
Heineman's Winery
Howard Hanna
Margaritas on the Rocks
Miller Boat Line
Mossbacks
Northern Exposure Investments
Perry's Cave Family Fun
Center
PiB Daily



Don't forget!

**Become an annual
sponsor of our newsletter
for \$100. Place an ad in our
newsletter and receive an annual
Friend Membership FREE!
Call 419-366-2087**

THANK YOU!

**This list reflects memberships and donations since our last newsletter.
All life members are listed in side box.*

Background Photo: Shoreline Ice Photo by Lisa Brohl

LEIC Membership Form*

Membership Notices are sent out annually-
this is for new memberships-share with your friends

___\$25 Friend ___\$50 Supporter ___\$100 Contributor
___\$100 Friend/AD ___\$250 Steward ___\$500 Patron



___\$1000 Life

Name _____

Spouse/Companion _____

Island Address PO Box _____ Put-In-Bay, Ohio 43456

E-mail _____

Permanent Address _____

City _____ State _____ Zip _____

Phone # _____ Cell # _____

Island # _____

In addition to my membership, I would like to donate to:

Land Protection Fund

I would like to contribute \$ _____ to the Lake Erie Islands Conservancy, to be used only for expenses related to the purchase of land.

I understand that I will receive a *Certificate of Donation* for income tax purposes.

Stewardship Fund

I would like to donate \$ _____ to the Stewardship Fund to help maintain those properties owned by the Lake Erie Islands Conservancy.

Please make checks payable to (LEIC) Lake Erie Islands Conservancy

Please Send to: PO Box 461, Put-in-Bay, Ohio 43456

All donations are tax deductible.

Thank You!

*To join LEIC online, please go to

<https://lakeerieislandsconservancy.org/membership/>



IN MEMORIAM

Carol Richardson



By Matt Richardson and Kate Richardson Bilski—If you did not know our Mom you must know that she was, for a large part of her life, a woman of two islands.....Middle Bass Island Ohio and Gasparilla Island, Boca Grande, FL. She left us last week with grace and dignity. She loved MBI....

Carol Ann Richardson, 86, of Middle Bass Island and Boca Grande Florida, passed away on Tuesday January 18th, 2022, from Lymphoma at the Renaissance Retirement Community in Olmsted Falls Ohio. Carol was born Carol Adams on August 24th, 1935, to Wesley Adams and Helen (nee Sutherin) Adams in Cansburg Pennsylvania. Carol was a 1953 graduate of Lakewood (Ohio) High School and a 1957 graduate of Baldwin Wallace College where she earned her undergraduate degree in Education and met her husband of 47 years, Mac Richardson. During her teaching career Carol taught elementary grades and earned her master's degree as a specialist teaching Visually Impaired students.

In the spring of 1964 Carol saw a small ad in the Berea Sun Times listing for sale a cottage on Middle Bass Island. Most likely after some prodding, she convinced Mac to go and check out the property. From there ensued a day trip on the Erie Isle ferry, tour by Bill Cumberworth, and a purchase agreement. Carol and Mac owned their first home in the Middle Bass Club and Carol began a fifty-seven-year journey of love and appreciation for the Lake Erie Islands.

In 1974 Carol took inspiration from a visit to a Kite Shop in San Francisco and opened the Island Kite Shop on Put-in-Bay in the building across from the Colonial. For over 25 years the shop was a destination for kiting enthusiasts and introduced many to the sport and art of flying a kite. In 1980 she purchased the commercial side of the building and opened the Island Surf Shop. In 1995 Carol sold the building and business and she and Mac purchased their winter home on Gasparilla Island, FL.

Carol's proudest accomplishment at the lake was her involvement in land preservation. Carol was the insti-

gator and mastermind behind a lot of the original land preservation efforts on the Bass Islands. She worked to preserve the Kuehnle State Wildlife Area with the Friends of Haunck's Pond and led letter writing efforts to establish the Middle Bass Island State Park. She convinced the Black Swamp Conservancy to start the Lake Erie Islands Chapter in 2000 (now the Lake Erie Islands Conservancy) and served on the Advisory Board. Current board members remember Carol for her vision, hard work, and wonderful people skills that helped make these things happen.

Family meant everything to Carol. She cherished friend and family get togethers at Middle Bass and Boca Grande and her door was always open for a visit on the porch at either location. She was truly a friend to all and lived her life in the present with love and acceptance. In her later years when travel to Middle Bass was not possible, she enjoyed visiting with family and reminiscing about her dogs, gardening, and the people she met and events she experienced during her time on Middle Bass Island.

Carol was preceded in death by her husband Mac (2005); brother Pete Adams (2021); sister Barbara Nash (2018); brother Larry Adams (1980); and her parents. She is survived by son Matt Richardson (Mary Jane); daughter Kate Richardson, Grandchildren; Leah, Mac, Maria, Nadia, and Rhett; sister-in-law Yvonne Adams, brother-in-law Mark Nash; and seven nieces.

A celebration of life will be held this summer on Middle Bass at a date to be determined.

Memorial contributions can be made in Carol's name to: Lake Erie Island Conservancy, P.O. Box 461 Put-in-Bay OH, 43456. www.lakeerieislandsconservancy.org



IN MEMORIAM

Barbara Lehman Chrysler

Barbara Lehman Chrysler passed away on February 14, 2022, at the age of 69, following a brief stay at Otterbein Rehab Center in Marblehead, Ohio.

Barb lived on the west shore at Put-in-Bay and was a long-time member of the Lake Erie Islands Conservancy. She was an avid bird watcher and took great pleasure in feeding birds and deer from the woods surrounding her home. She adopted and cared for stray and feral cats, providing shelter, nourishment, love and veterinary care. Barb took part in the island's annual Audubon Christmas Bird Count.

A Celebration of Life will take place at the Put-in-Bay Yacht Club on Saturday, May 21, from 2:00 to 6:00.

Memorial donations to fund a special bird feeder at the Nature Center may be made in Barb's name to: Lake Erie Islands Nature and Wildlife Center, c/o Wild Bird Feeding Program, PO Box 871, Put-in-Bay, Ohio 43456. Memorials may also be made to Island Safe Harbor Animal Sanctuary, 3620 E. State Street Port Clinton, Ohio 43452.



PO Box 461
Put-In-Bay, Ohio 43456
Phone: 419-366-2087
E-Mail: leiconservancy@gmail.com



We're on the Web!
www.lakeerieislandsconservancy.org

*New Address? Send to
shullinda3661@gmail.com or
Save paper-time-and money!
Have your newsletter emailed to you!
Email: jd4mb2011@gmail.com*

Board of Directors

Chairperson

Lisa Brohl

Secretary/Treasurer

Kelly Faris

Board Members

Susan Byrnes - Marsha Collett
Darren Dunning - Ken Farber
Dustin Heineman - Colleen Kerkay
John Ladd - Peggy Leopold - Bruce Miles
Kristin Stanford - Paula Ziebarth

Advisory Council

Dave Bugoci - John Dodge
Richard Gump - Julene Market
Bob Russell - Linda Shull
Nancy Welter

Newsletter Editors

Lisa Brohl
Michelle Pennington

LEIC Historian

Elizabeth Heineman

Spring and Summer promise lots of excitement with LEIC events—keep checking our website and Facebook pages for more info!



May 4, 2022 for Back To The Wild Visit
May 7, 2022 for Garlic Mustard Challenge
May 11, 2022 for Ohio Wildlife Diversity Conference
May 14, 2022 for Island Wide Garage Sale
June 11, 2022 for Founders Day

July 16, 2022 for Middle Bass Music Festival
August 6-13, 2022 for Island Green Week
August 6, 2022 for Middle Bass Island Poker Kayak Day
August 7, 2022 for Morrison Woods Dedication
August 11, 2022 for Lake Erie Awareness Day



A HUGE Thanks to Bostwick-Braun for printing assistance!!



Important Announcements

****All LEIC associated Events scheduled for the coming months could potentially be cancelled due to the current COVID-19 global pandemic. Please watch Facebook or the LEIC Website (<https://lakeerieislandsconservancy.org/>) for updates.**

Please Note: While we are hoping you and your family are taking appropriate measures to stay safe as we all navigate this challenging time, please remember that the Island Preserves (<https://lakeerieislandsconservancy.org/maps-of-the-lake-erie-islands/>) are all open and a wonderful place for you to get out and get some fresh air and exercise with your family. (Please remember: If you're taking your pets with you, make sure to follow posted rules—on leash, use provided doggie bags, etc.)

Special Tax Note: Those who make cash donations to public charities will be able once again to deduct those donations on their 2021 tax return, even if they take the standard deduction and don't itemize their return.

This is an extension of the charitable tax deduction on 2020 standard deduction tax returns. The difference between the 2021 and the 2020 charitable deduction is that in 2021 the deduction allowed will be up to \$600.00 for those who are married and file jointly. (versus \$300.00 per return in 2020).